

## SCHEMATIC COST ESTIMATE

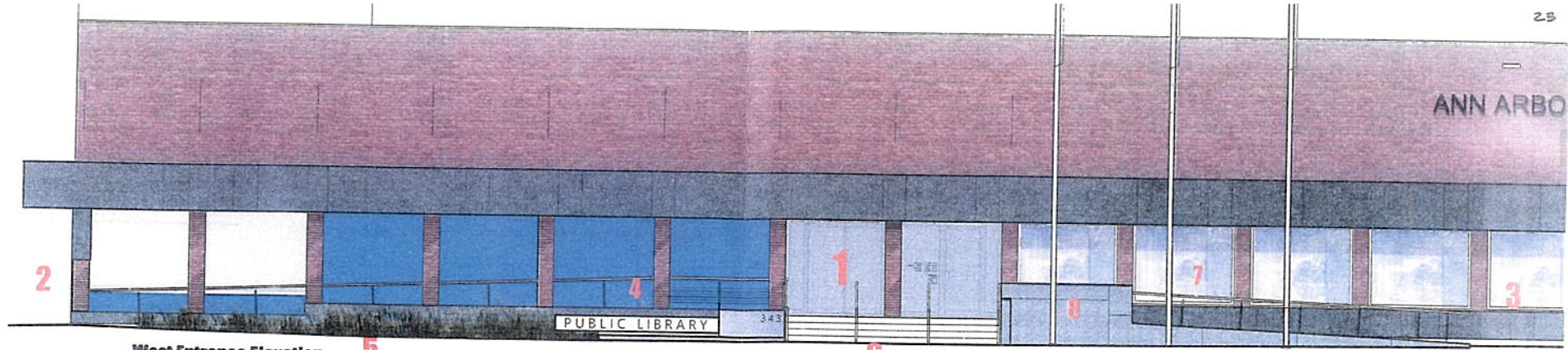
Project name &amp; location: Ann Arbor District Library Main Entry - REVISED

Bldg size &amp; description: 2,900 SF Based on Arch. Drawings dated 7/1/14

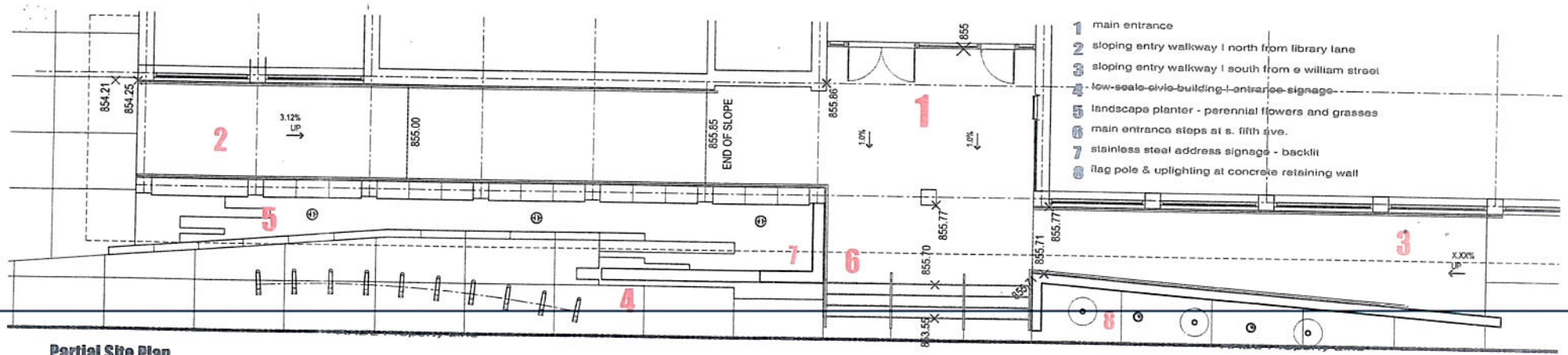
Estimate date &amp; estimator: 7/15/2014 MG/NW

		←--- Cost Breakdown ---→			Total	
Category Name:	Pricing Source:	Quantity	Unit x	Unit Cost =	Schematic Cost	Remarks
Design Services	None	0		0.00	\$0	Not in construction contract
Preconstruction Services	None	0		0.00	0	Engineer of cladding system by others
Building Demolition	N/A	-		-	0	Not in construction contract
Equipment	OCI	1	LS	3,000.00	3,000	Scaffolding
Fascia Demo	OCI Allowance	80	MH	55.00	4,400	
Site Demolition	Subcontractor	1	LS	27,500.00	27,500	Existing concrete West of Library to property line
Earthwork & Grading	Subcontractor	1	LS	12,500.00	12,500	West of Library to property line
Bike Racks	OCI Allowance	10	EA	500.00	5,000	
Landscaping	OCI Allowance	1	LS	5,000.00	5,000	
Concrete	OCI	2,900	SF	7.58	22,000	6" S.O.G. standard sidewalk
Concrete North of Library	N/A	-		-	0	DDA Scope of work
Concrete 1/2 walls	OCI	8	CY	687.50	5,500	
1/2 wall footings	OCI	100	LF	58.33	5,833	
Decorative Steel Handrails	HDI	25	LF	294.00	7,350	Circum Guardrail w/stainless steel top rail and stainless steel infill
Standard Galvanized Handrails	Subcontractor	200	LF	75.00	15,000	Along one side of the ramp
Rough Framing/Carpentry	N/A	-		-	0	
OKO Skin Plank Material	fibrec North America	1,035	SF	15.00	15,525	Fascia and Wall perpendicular to entry
OKO Skin Recladding Labor	OCI	120	MH	75.00	9,000	
Fascia Backup	OCI Allowance	1	LS	5,000.00	5,000	Assume Z-furring
Joint Sealants	OCI	1	LS	1,000.00	1,000	
Glass/Glazing	Subcontractor	1	LS	58,000.00	58,000	Exterior/ Interior new curtain wall glazing with balanced double doors and standard single
Plaster Patching	OCI Allowance	1	LS	2,500.00	2,500	
Painting of Soffit	OCI	1	LS	3,900.00	3,900	Labor with standard paint material
Electrical	Subcontractor	1	LS	5,700.00	5,700	Excludes electrical for signage
Electrical for Signage	OCI Allowance	1	LS	2,000.00	2,000	Exterior signage
Existing Soffit Lighting	OCI	10	EA	100.00	1,000	Replace existing fixture lamps with LEDs
Flagpole Lighting	Clarus Lighting	2	EA	1,145.00	2,290	Between flagpoles
Landscape Lighting	Clarus Lighting	3	EA	618.00	1,854	
Masonry Column Fixtures	Clarus Lighting	9	EA	312.00	2,808	Columns North of entry
Masonry Column Fixtures	Clarus Lighting	5	EA	152.00	760	Columns South of entry
Signage Lighting	Clarus Lighting	2	EA	596.00	1,192	Above signage at entry
General Requirements	OCI	15	%	225,612	33,842	
Sub-Total					259,454	
Permit ALLOWANCE:		1			2,000	For A2 jobs over \$100k
Perf/LM Bonds:		1			0	Not Included
OCI Fee: %		10%			25,945	
Construction Contingency:		10%			25,945	
Design Contingency		6%			15,567	
<b>SUBTOTAL SCHEMATIC COST:</b>					<b>\$328,912</b>	
Alternates:						
Fiber C Cladding Material Under Windows South of Entry					\$9,042	ADD
(2) New Flagpoles					\$13,235	ADD
Heated Sidewalks per AS100 dated 7/1/14					\$67,834	ADD
Signage						- By Owner
Sound System with (3) Speakers					\$6,500	ADD
<b>TOTAL SCHEMATIC COST:</b>					<b>\$425,523</b>	

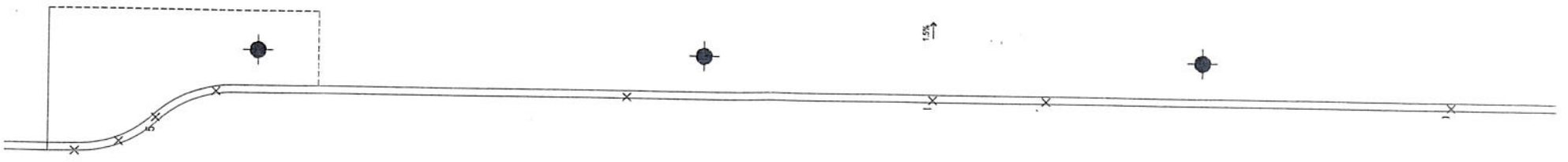
ANN ARBO



West Entrance Elevation  
AADL | Main Library



Partial Site Plan  
AADL | Main Library





**BOARD OF TRUSTEES OF  
ANN ARBOR DISTRICT LIBRARY  
RESOLUTION 14-136**

**RESOLUTION TO APPROVE THE CONSTRUCTION BUDGET FOR THE  
DOWNTOWN LIBRARY FRONT ENTRANCE REDESIGN**

Minutes of a regular meeting of the Board of Trustees of the Ann Arbor District Library, County of Washtenaw, Michigan, held in the City of Ann Arbor, on the 21<sup>st</sup> day of July, 2014 at 7:00 p.m.

PRESENT:

ABSENT:

The following resolution was offered by \_\_\_\_\_, and supported by \_\_\_\_\_:

THE BOARD RESOLVES:

- 1.) To approve the construction budget provided by O’Neal Construction Inc. for the Downtown Library front entrance redesign.
- 2.) To increase the budget line for Capital Outlays by \$425,523.00 for redesign of the front entrance of the Downtown Library.
- 3.) That the \$425,523.00 increase for Capital Outlays be transferred from the Fund Balance.
- 4.) That all resolutions and parts of resolutions that conflict with the provisions of this resolution are rescinded.

A vote on the foregoing resolution was taken and was as follows:

AYES:

NAYS:

RESOLUTION DECLARED ADOPTED.

\_\_\_\_\_  
Secretary