

# 618 SOUTH MAIN STREET

Ann Arbor, Michigan

URBAN GROUP DEVELOPMENT • Ann Arbor  
Developer

VOA ASSOCIATES • Chicago  
Architect

INSITE DESIGN STUDIO • Ann Arbor  
Landscape Architect

WASHTENAW ENGINEERING • Ann Arbor  
Civil Engineer

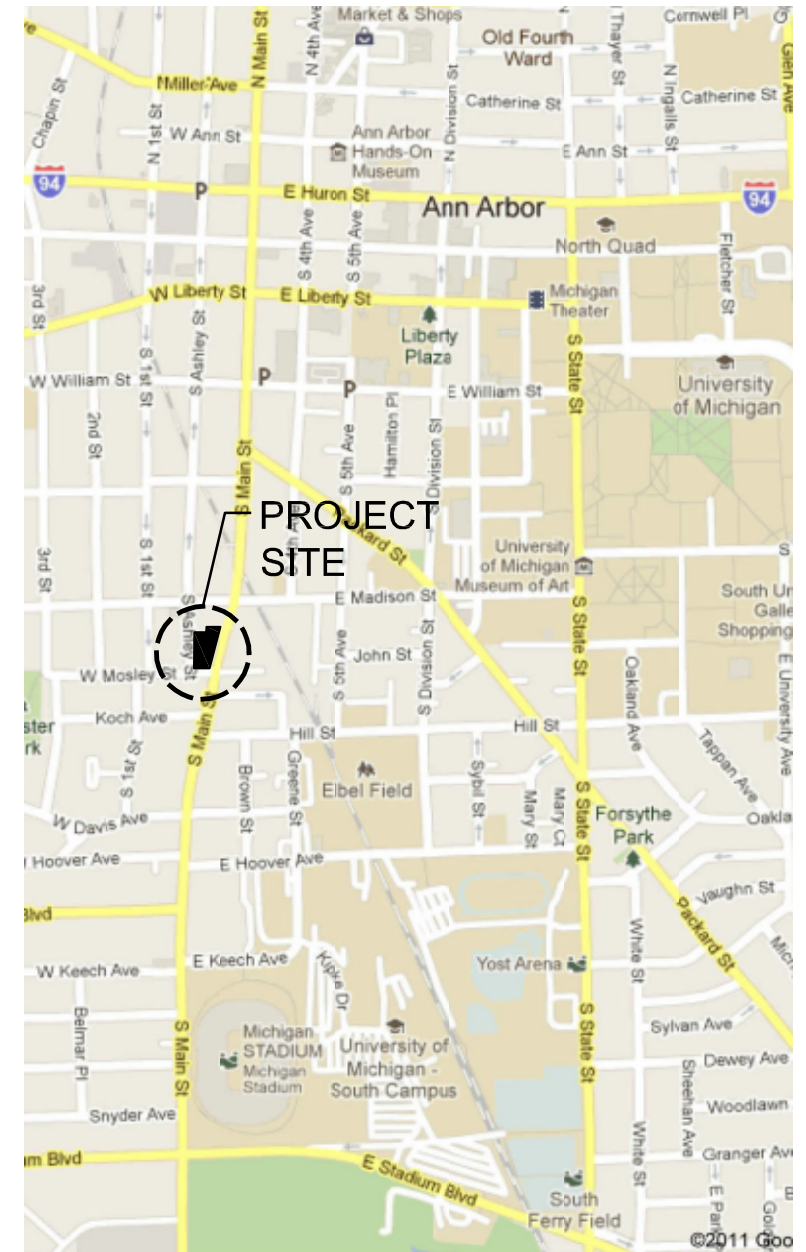
HELGERSON DESIGN • Portland  
Interior Design

ROBERT DARVAS ASSOCIATES • Ann Arbor  
Structural Engineer

U.S. EQUITIES • Chicago  
Development Consultant

ZIMMERMAN / VOLK ASSOCIATES • New Jersey  
Market Analysis

MILLER CANFIELD • Ann Arbor  
Legal Counsel



ISSUED FOR DESIGN REVIEW BOARD

NOVEMBER 8, 2011





VIEW FROM NORTHEAST CORNER OF SITE

618 SOUTH MAIN STREET  
Ann Arbor, Michigan

URBAN GROUP DEVELOPMENT COMPANY  
Prepared November 8, 2011 by VOA Associates





Bach Elementary



Argus Building



Math Reviews Building

NEIGHBORHOOD CONTEXT PHOTOS

618 SOUTH MAIN STREET  
Ann Arbor, Michigan

URBAN GROUP DEVELOPMENT COMPANY  
Prepared November 8, 2011 by VOA Associates

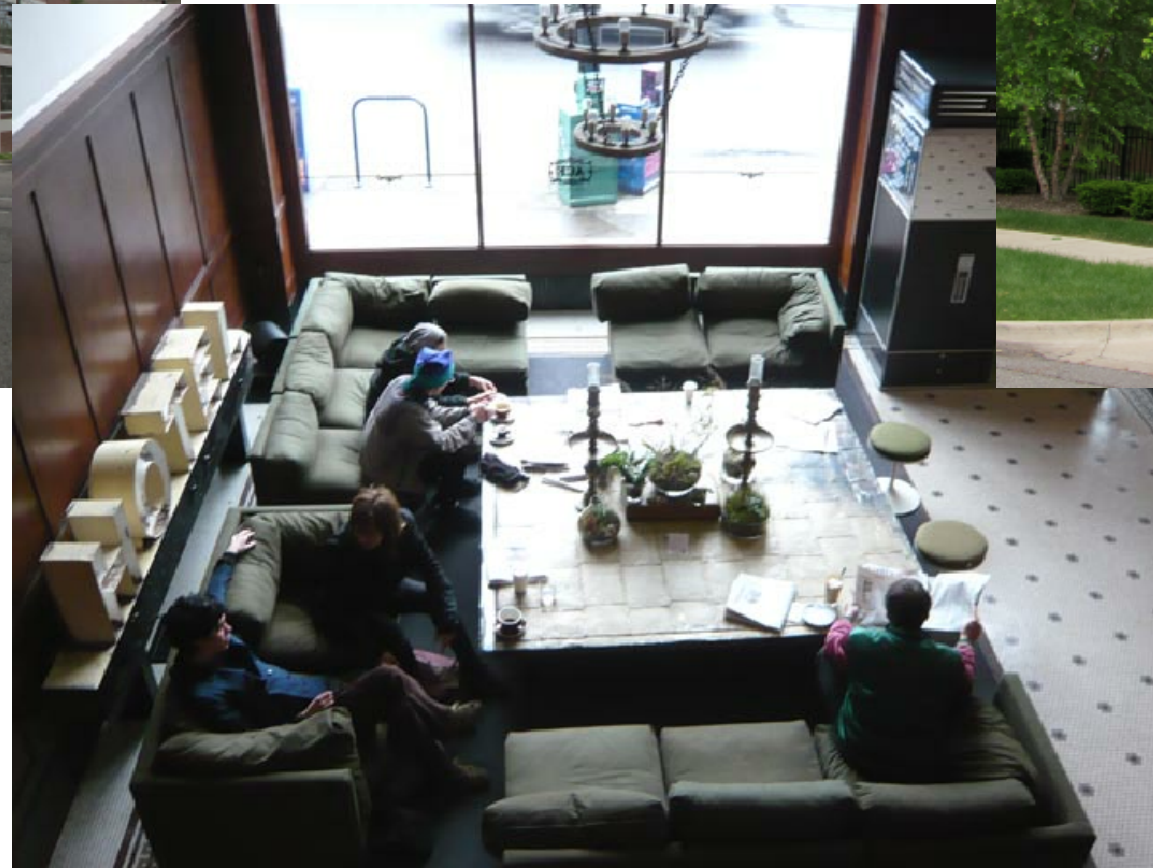




Ann Arbor warehouse lofts



Ann Arbor warehouse lofts



Ace Hotel

## DESIGN CHARACTER PHOTOS

618 SOUTH MAIN STREET  
Ann Arbor, Michigan

URBAN GROUP DEVELOPMENT COMPANY  
Prepared November 8, 2011 by VOA Associates





Modera Hotel



Portland townhomes



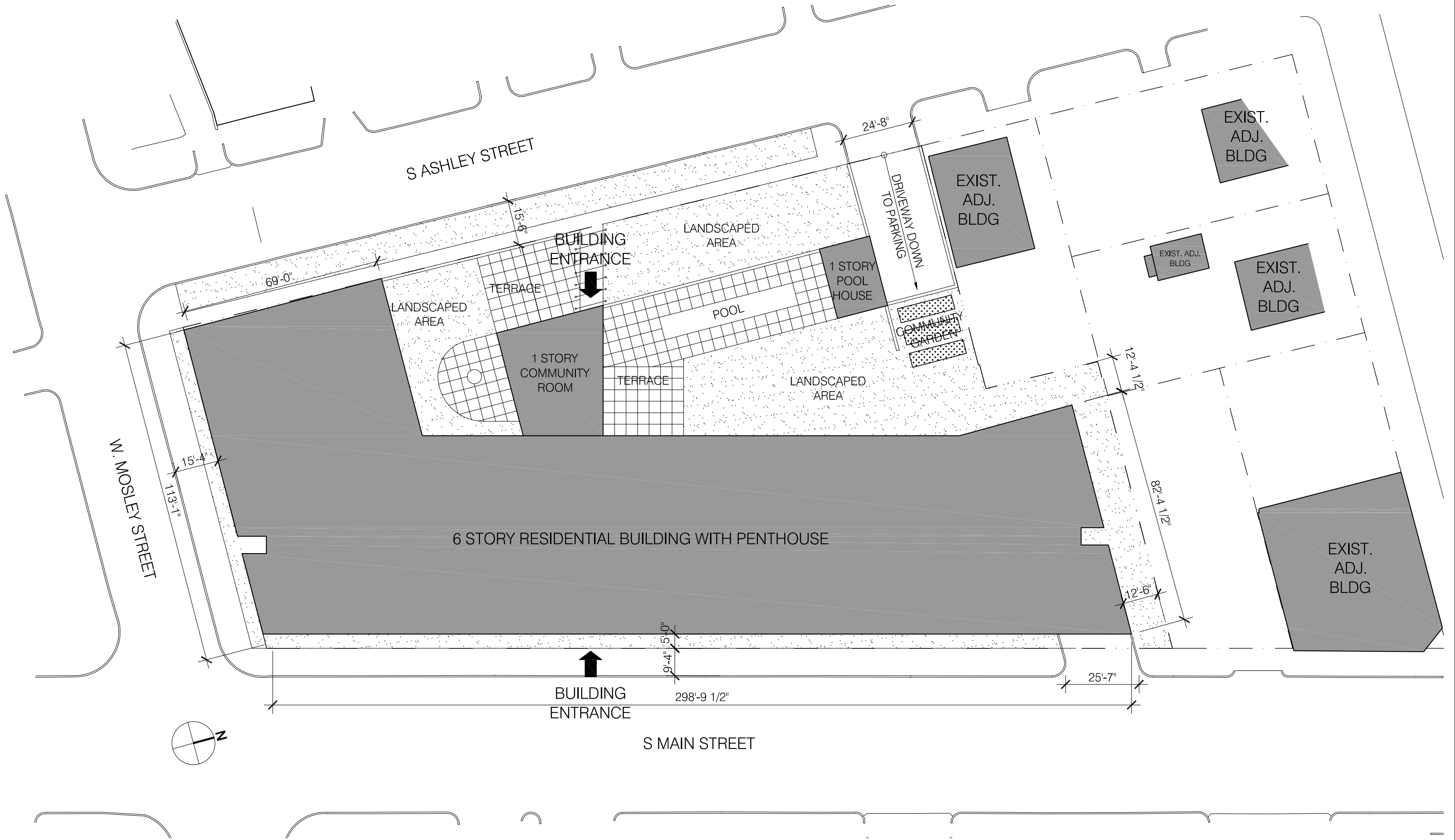
Portland Townhomes

DESIGN CHARACTER PHOTOS

618 SOUTH MAIN STREET  
Ann Arbor, Michigan

URBAN GROUP DEVELOPMENT COMPANY  
Prepared November 8, 2011 by VOA Associates

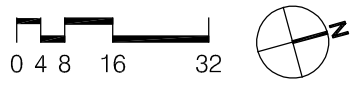




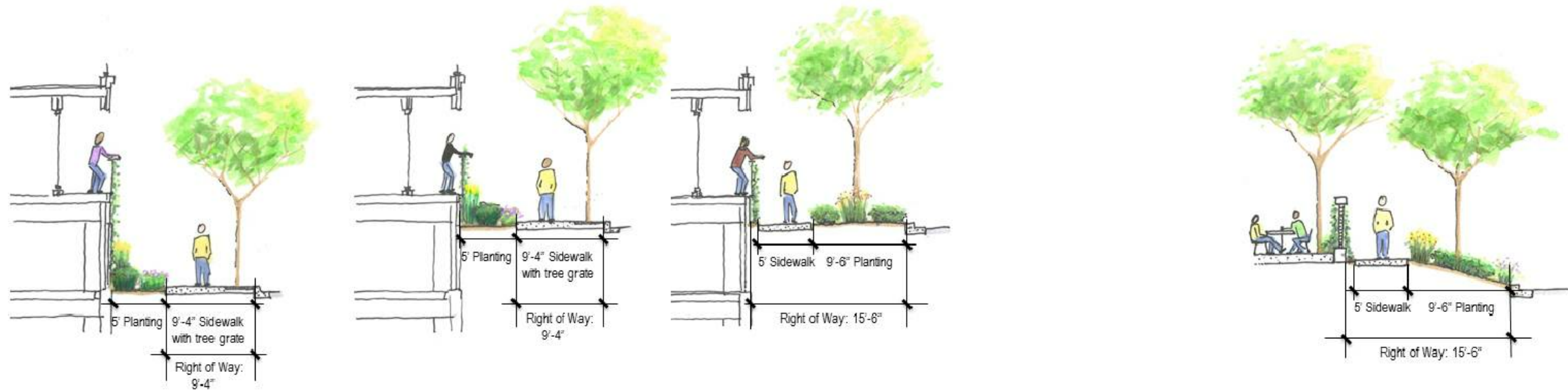
**SITE PLAN**

**618 SOUTH MAIN STREET**  
Ann Arbor, Michigan

**URBAN GROUP DEVELOPMENT COMPANY**  
Prepared November 8, 2011 by VOA Associates







Main Street: North End

Main Street: South End

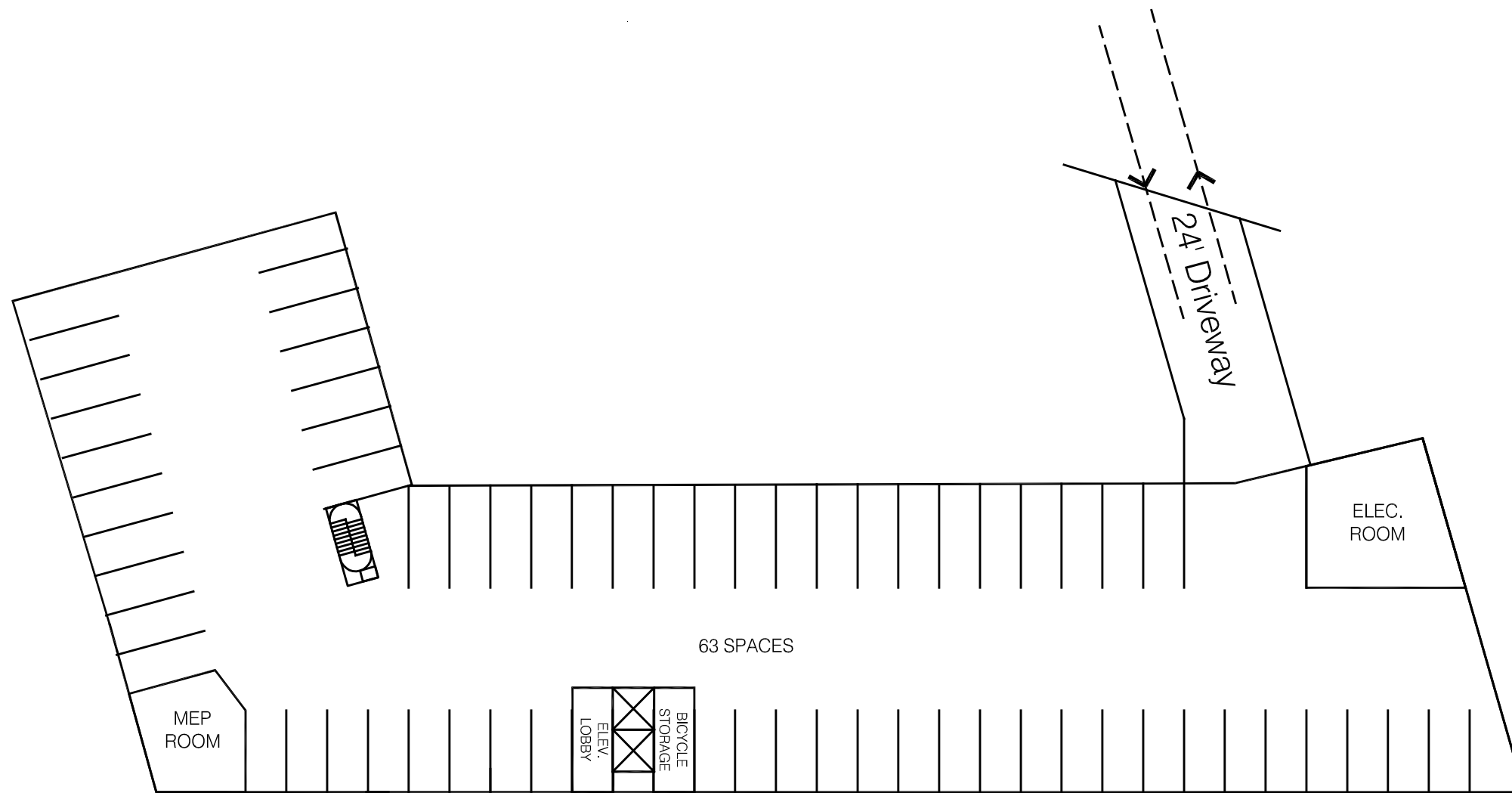
Mosley Street

Ashley Street: Courtyard South of Pedestrian Entry

SITE SECTIONS

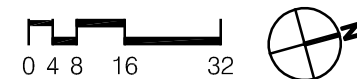
NOT TO SCALE





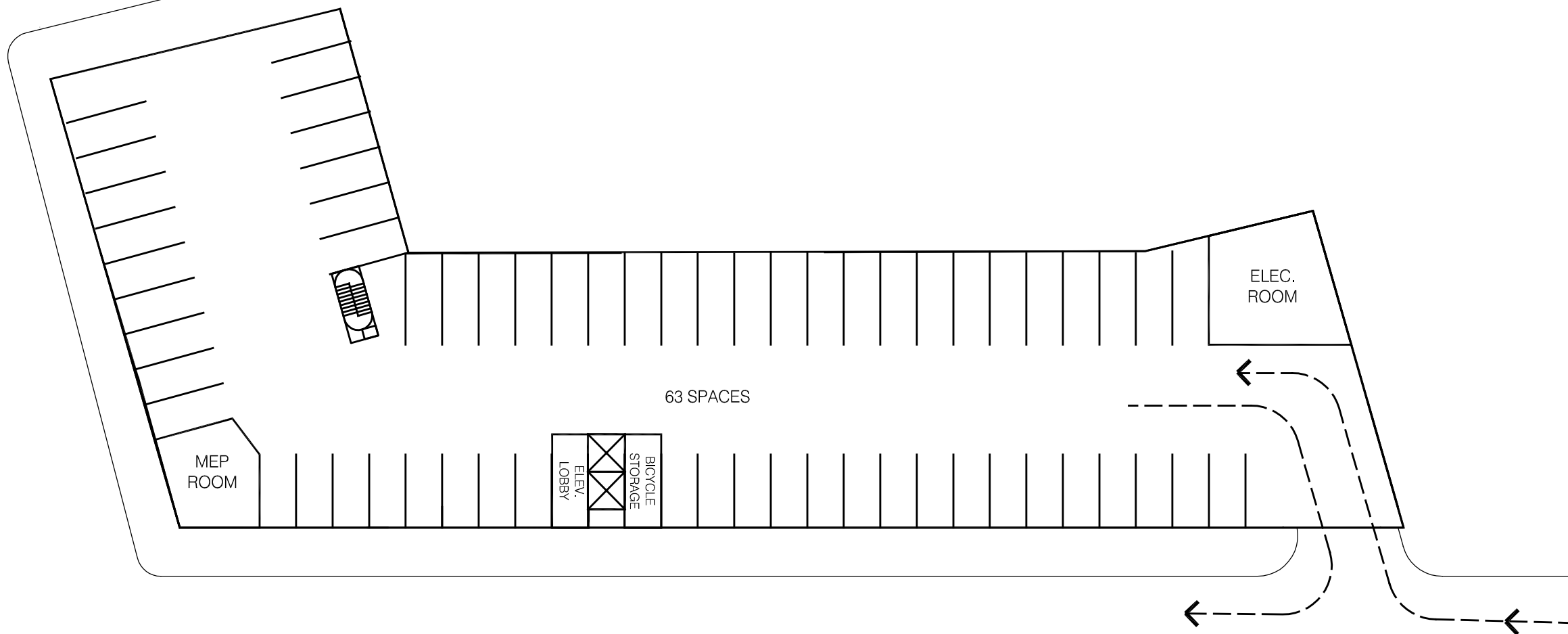
PARKING FLOOR PLAN - LEVEL P2

618 SOUTH MAIN STREET  
Ann Arbor, Michigan

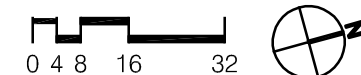


URBAN GROUP DEVELOPMENT COMPANY  
Prepared November 8, 2011 by VOA Associates





**PARKING FLOOR PLAN - LEVEL P1**



**618 SOUTH MAIN STREET**  
Ann Arbor, Michigan

**URBAN GROUP DEVELOPMENT COMPANY**  
Prepared November 8, 2011 by VOA Associates



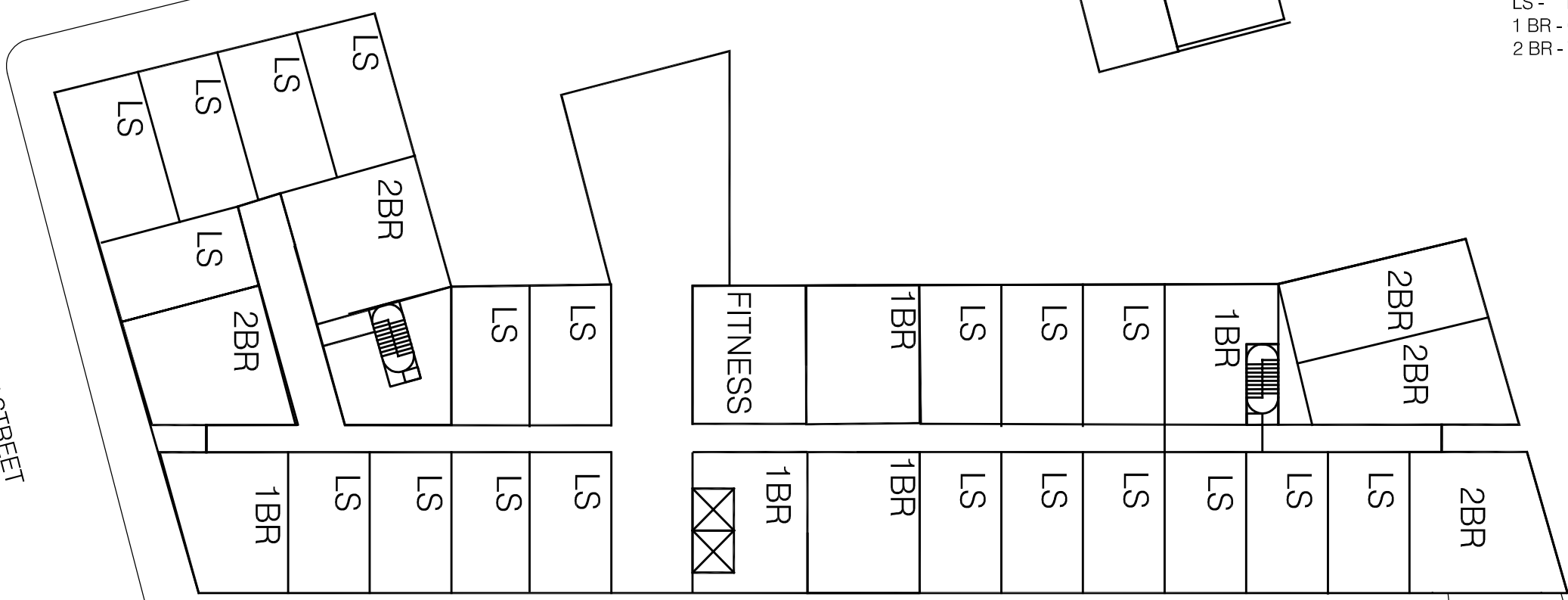
S ASHLEY STREET

W. MOSLEY STREET

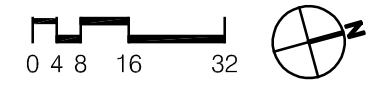
S MAIN STREET

UNIT TYPE DESIGNATIONS

- SS - SMALL STUDIO
- LS - LARGE STUDIO
- 1 BR - ONE BEDROOM
- 2 BR - TWO BEDROOM



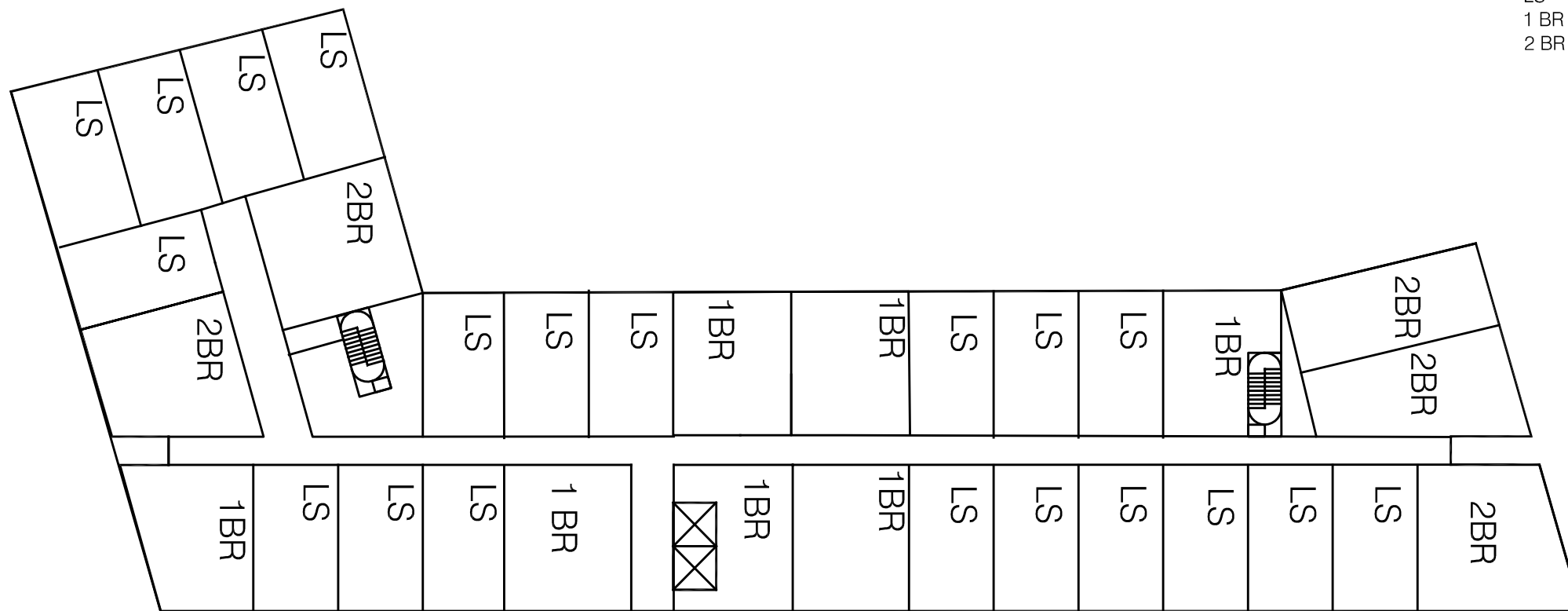
RESIDENTIAL FLOOR PLAN - LEVEL 01



618 SOUTH MAIN STREET  
Ann Arbor, Michigan

URBAN GROUP DEVELOPMENT COMPANY  
Prepared November 8, 2011 by VOA Associates

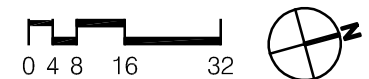




UNIT TYPE DESIGNATIONS

- SS - SMALL STUDIO
- LS - LARGE STUDIO
- 1 BR - ONE BEDROOM
- 2 BR - TWO BEDROOM

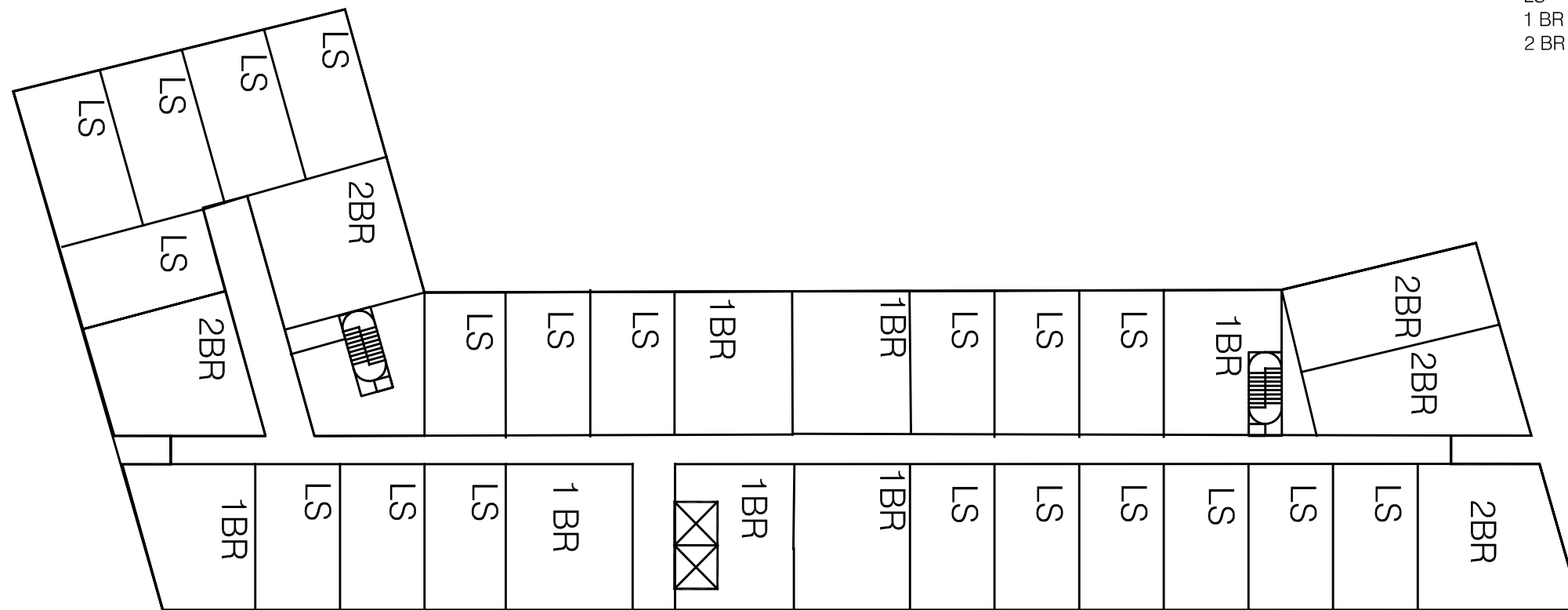
RESIDENTIAL FLOOR PLAN - LEVEL 02



618 SOUTH MAIN STREET  
Ann Arbor, Michigan

URBAN GROUP DEVELOPMENT COMPANY  
Prepared November 8, 2011 by VOA Associates

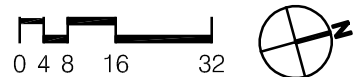




UNIT TYPE DESIGNATIONS

- SS - SMALL STUDIO
- LS - LARGE STUDIO
- 1 BR - ONE BEDROOM
- 2 BR - TWO BEDROOM

RESIDENTIAL FLOOR PLAN - LEVEL 03



618 SOUTH MAIN STREET  
Ann Arbor, Michigan

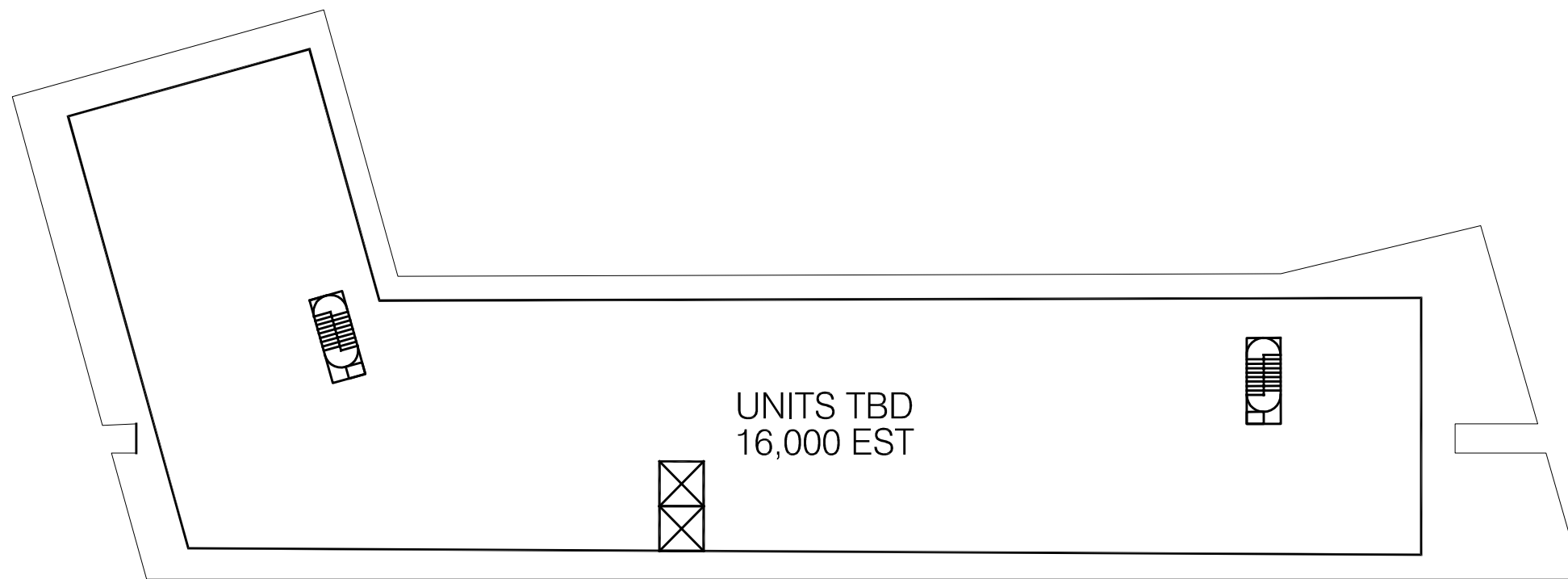
URBAN GROUP DEVELOPMENT COMPANY  
Prepared November 8, 2011 by VOA Associates



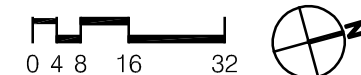








RESIDENTIAL FLOOR PLAN - PENTHOUSE LEVEL



618 SOUTH MAIN STREET  
Ann Arbor, Michigan

URBAN GROUP DEVELOPMENT COMPANY  
Prepared November 8, 2011 by VOA Associates

WEST FACADE



EAST FACADE



EAST AND WEST ELEVATION



618 SOUTH MAIN STREET  
Ann Arbor, Michigan

URBAN GROUP DEVELOPMENT COMPANY  
Prepared November 8, 2011 by VOA Associates



NORTH FACADE

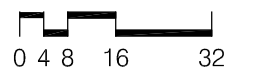


SOUTH FACADE



**NORTH AND SOUTH ELEVATION**

**618 SOUTH MAIN STREET**  
Ann Arbor, Michigan



**URBAN GROUP DEVELOPMENT COMPANY**  
Prepared November 8, 2011 by VOA Associates

85'-0"

70'-0" PENTHOUSE

60'-0" RESIDENTIAL SIX

50'-0" RESIDENTIAL FIVE

40'-0" RESIDENTIAL FOUR

30'-0" RESIDENTIAL THREE

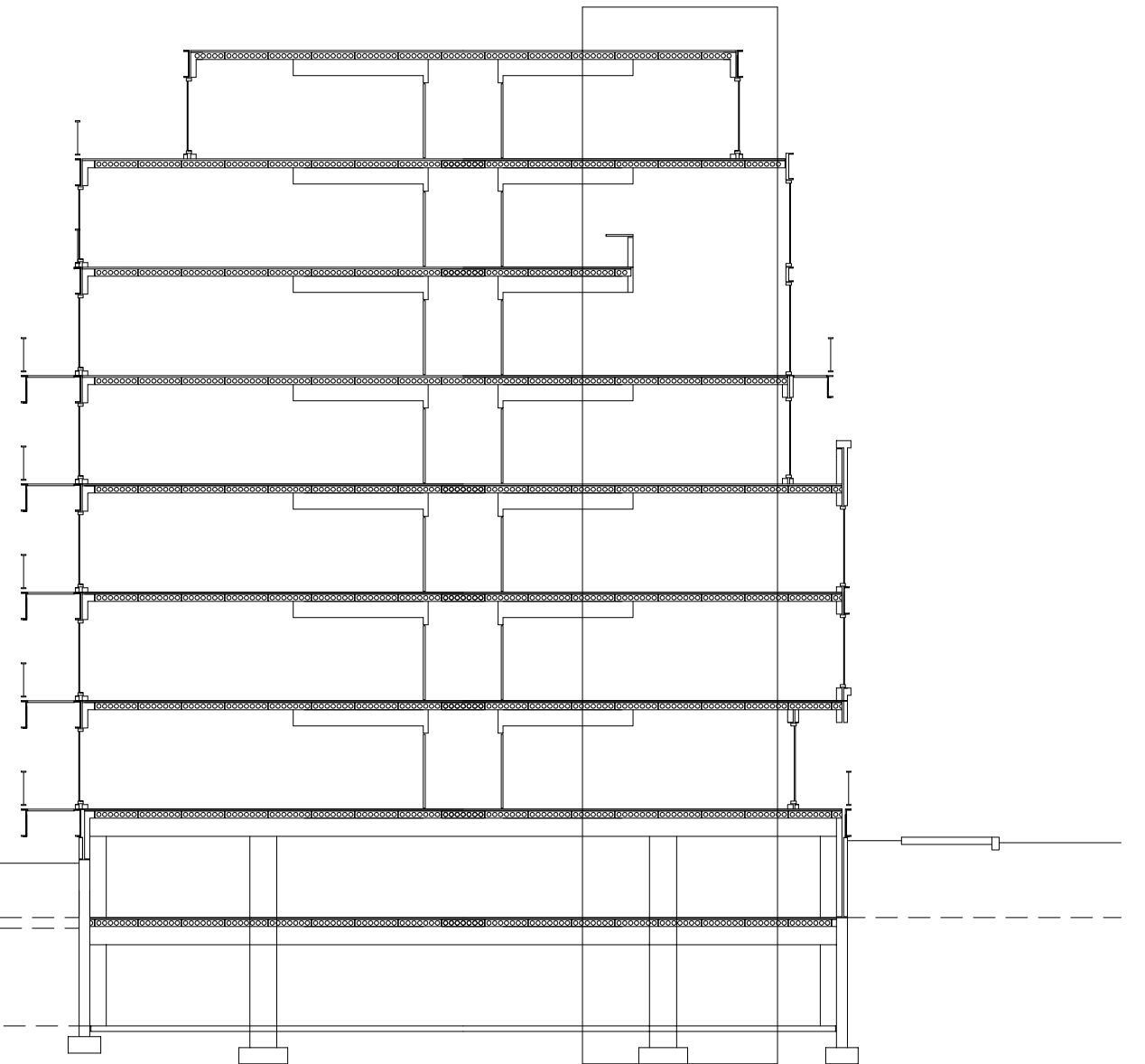
20'-0" RESIDENTIAL TWO

10'-0" RESIDENTIAL ONE

+5'-0" GRADE AT SOUTH END OF SITE

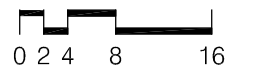
0'-0" PARKING TWO GRADE AT NORTH END OF SITE

-10'-0" PARKING ONE



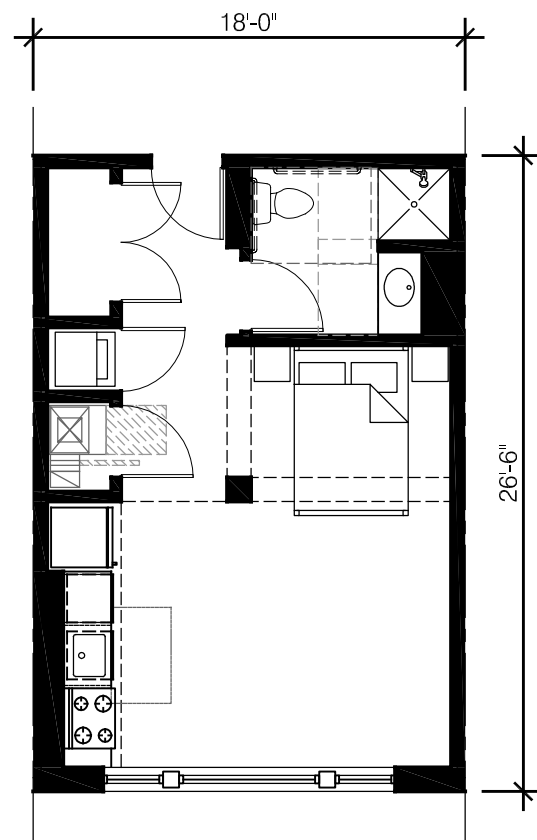
# BUILDING CROSS SECTION

618 SOUTH MAIN STREET  
Ann Arbor, Michigan

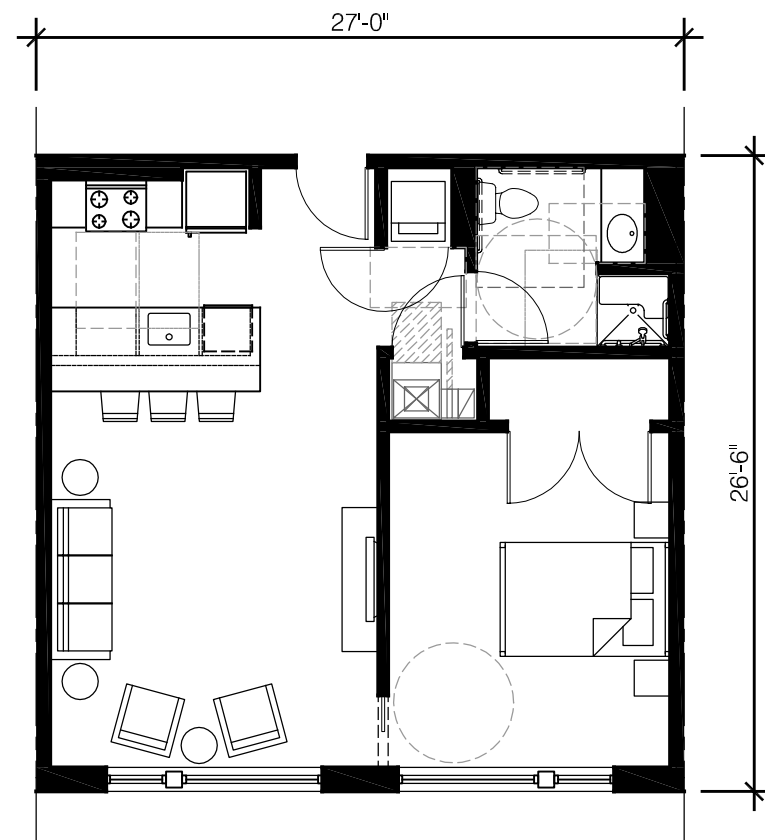


URBAN GROUP DEVELOPMENT COMPANY  
Prepared November 8, 2011 by VOA Associates

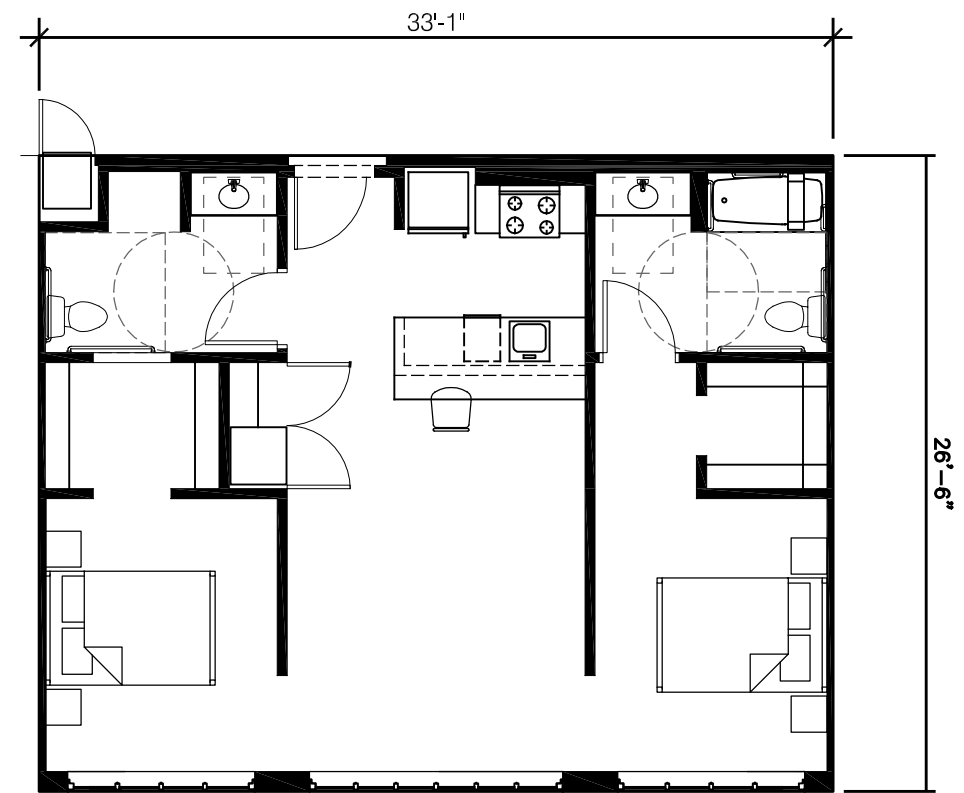




TYPICAL STUDIO UNIT



TYPICAL ONE BEDROOM UNIT



TYPICAL TWO BEDROOM UNIT

TYPICAL UNIT PLANS

618 SOUTH MAIN STREET  
Ann Arbor, Michigan



URBAN GROUP DEVELOPMENT COMPANY  
Prepared November 8, 2011 by VOA Associates



ALUMINUM CLADDING

BRICK MASONRY

WOOD WINDOWS  
PAINTED BLACK

PAINTED STEEL  
LINTEL

VINE-COVERED  
STREET WALL



ALUMINUM CLADDING

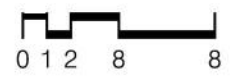
WOOD WINDOWS  
PAINTED BLACK

PAINTED STEEL  
LINTEL

VINE-COVERED  
STREET WALL

TYPICAL UNIT ELEVATIONS

618 SOUTH MAIN STREET  
Ann Arbor, Michigan



URBAN GROUP DEVELOPMENT COMPANY  
Prepared November 8, 2011 by VOA Associates





VIEW FROM SOUTHEAST CORNER OF SITE

618 SOUTH MAIN STREET  
Ann Arbor, Michigan

URBAN GROUP DEVELOPMENT COMPANY  
Prepared November 8, 2011 by VOA Associates