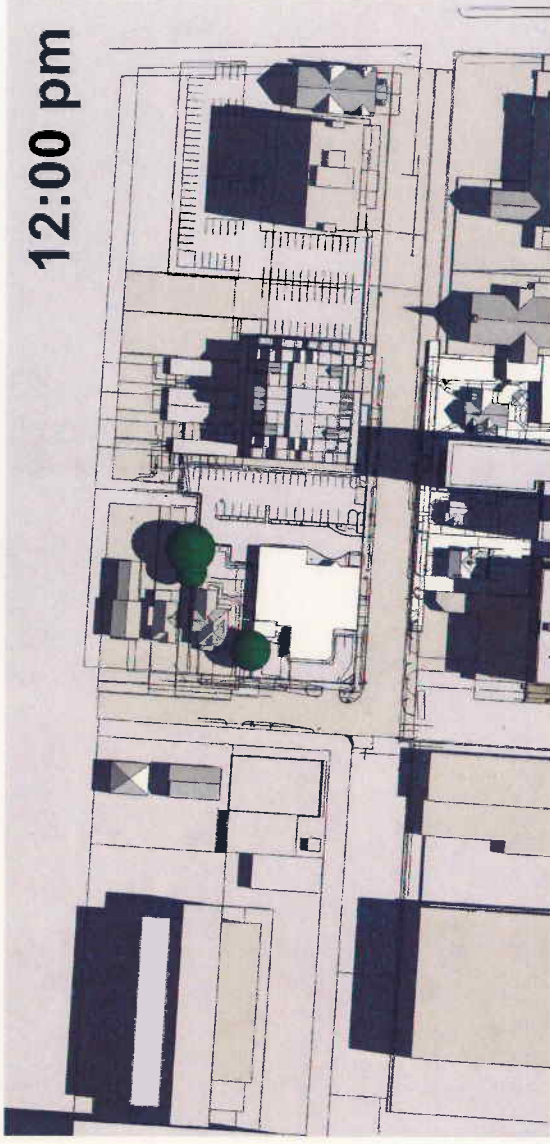
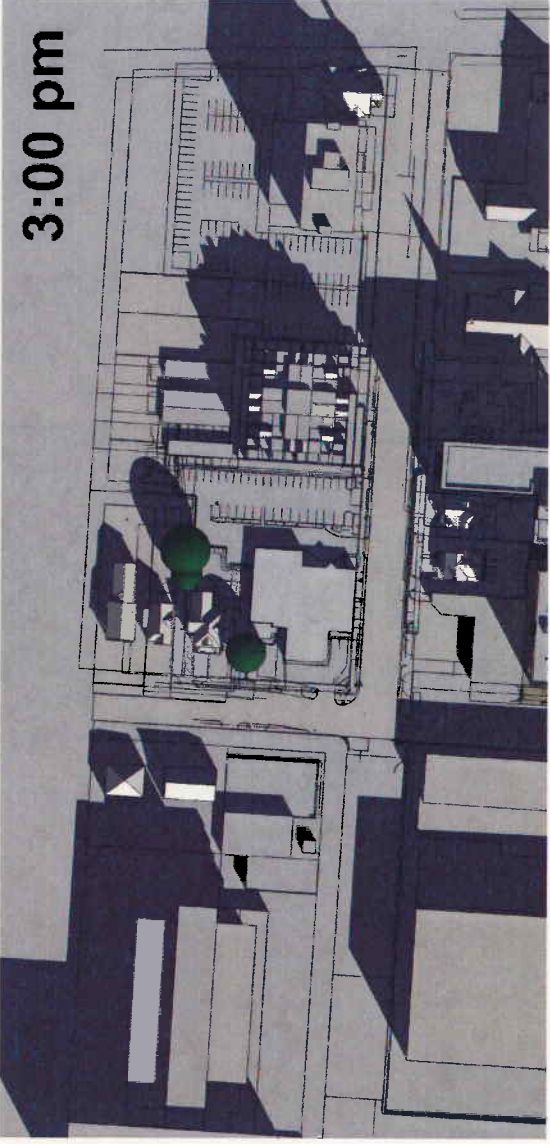


9:00 am



12:00 pm



3:00 pm

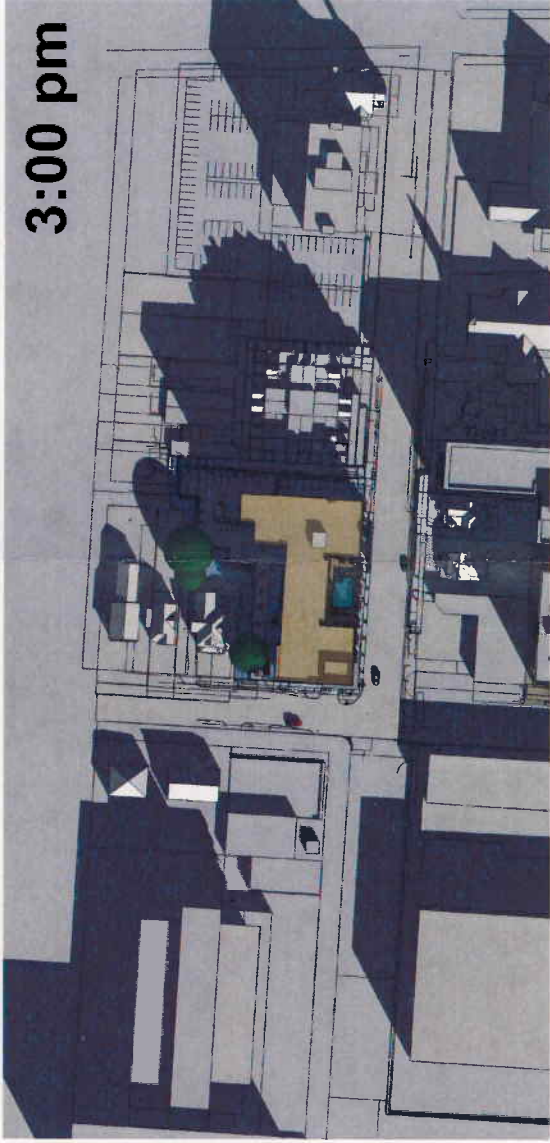
March 21st



9:00 am



12:00 pm



3:00 pm

March 21st

413 E. HURON ST.

ANN ARBOR GREEN PROPERTY OWNER LLC / CARTER

HPA# 2012327

ANN ARBOR, MI

12-14-2012

HUMPHREYS & PARTNERS ARCHITECTS LP
 Architectural conceptual site plans are for feasibility purpose only. Revisions may occur due to further investigation from regulatory authorities and building code analysis. Dimensions shown are of a strategic intent only. Refer to surveys and civil drawings for technical information and measurements.

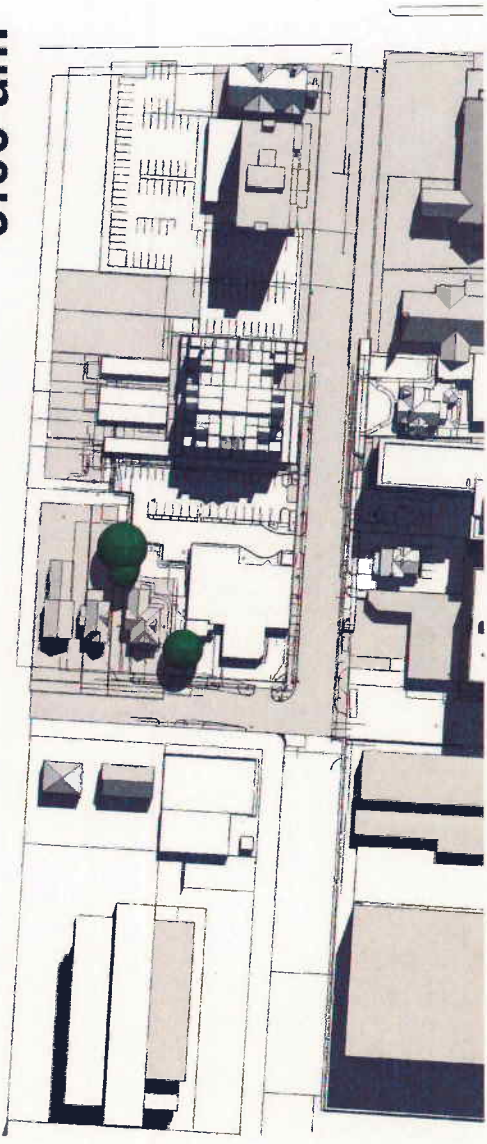
© **HUMPHREYS & PARTNERS ARCHITECTS LP**
 The arrangements depicted herein are the sole property of Humphreys & Partners Architects LP and may not be reproduced in any form without written permission.



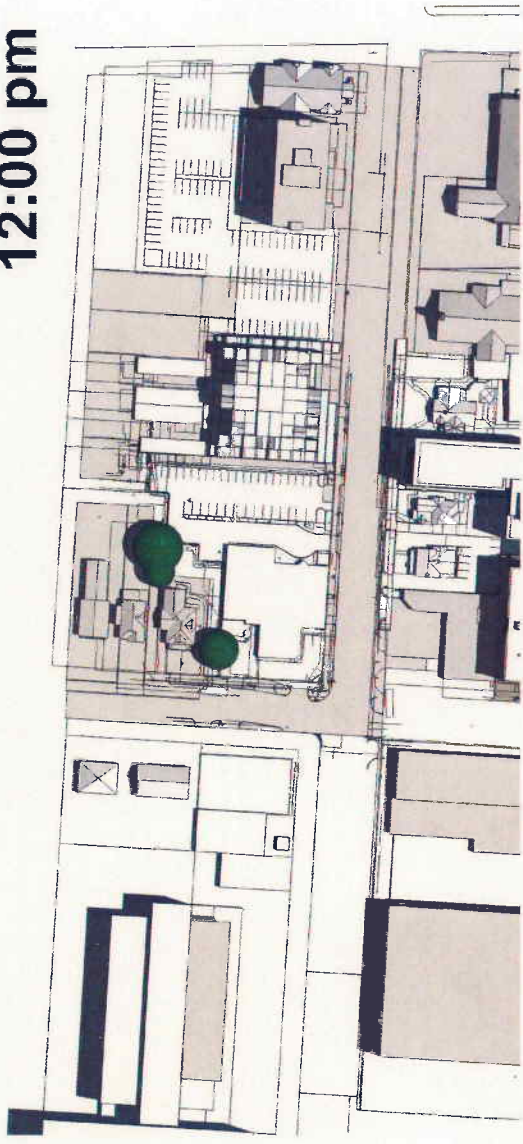
HUMPHREYS & PARTNERS ARCHITECTS LP

1000 North Zeeb Road, Suite 300, East Lansing, MI 48824
 517.333.1100
 1000 North Zeeb Road, Suite 300, East Lansing, MI 48824
 517.333.1100

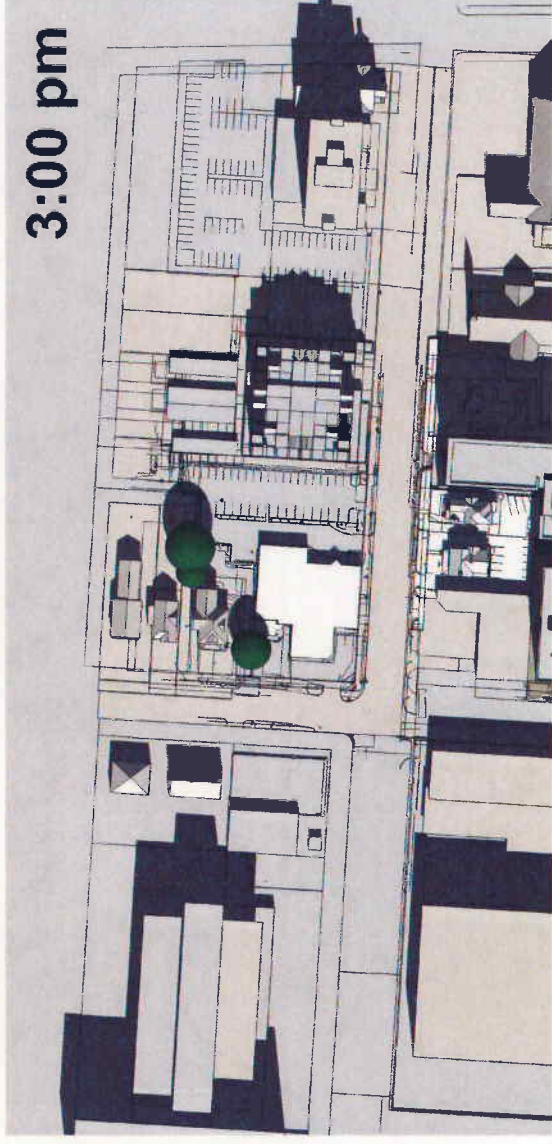
9:00 am



12:00 pm

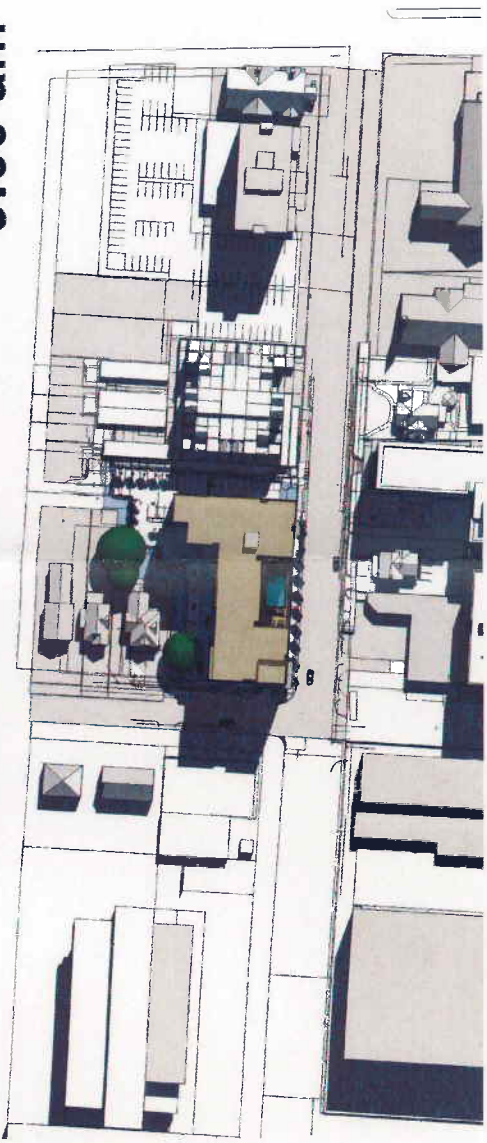


3:00 pm

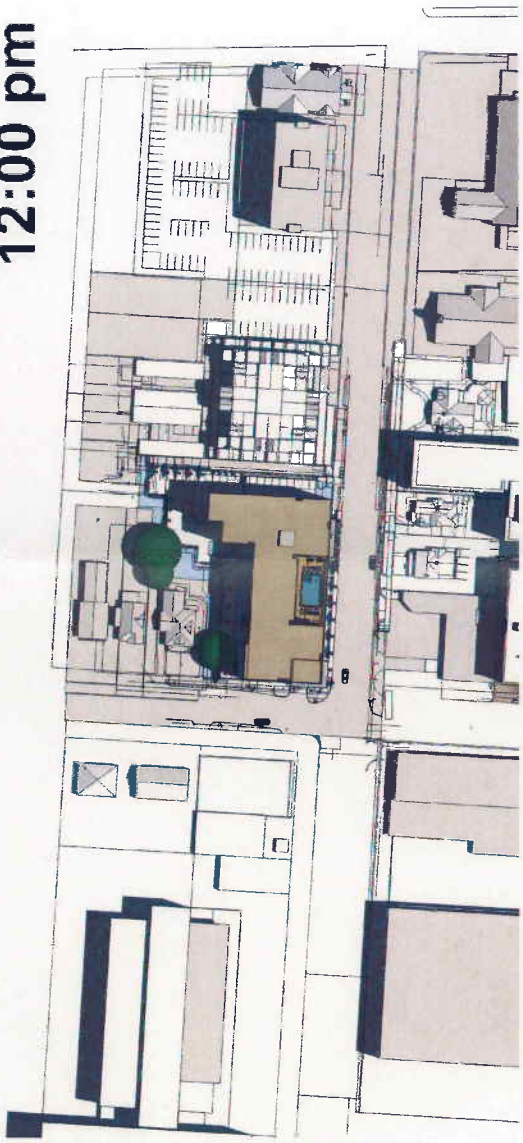


June 21st

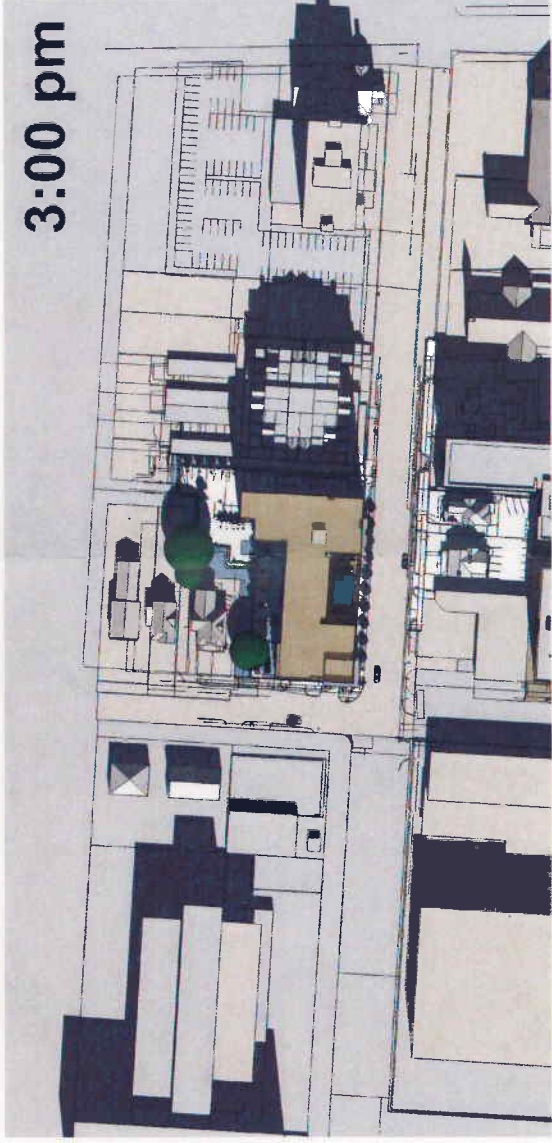
9:00 am



12:00 pm



3:00 pm



June 21st

HUMPHREYS
The arrangements depicted herein are the sole property of Humphreys & Partners Architects, LP and may not be reproduced in any form without its written permission.

PARTNERS
Architectural conceptual site plans are for feasibility purpose only. Revisions may occur due to further investigation from regulatory authorities and building code analysis. Dimensions shown are of a strategic intent only. Refer to surveys and civil drawings for technical information and measurements.

413 E. HURON ST.

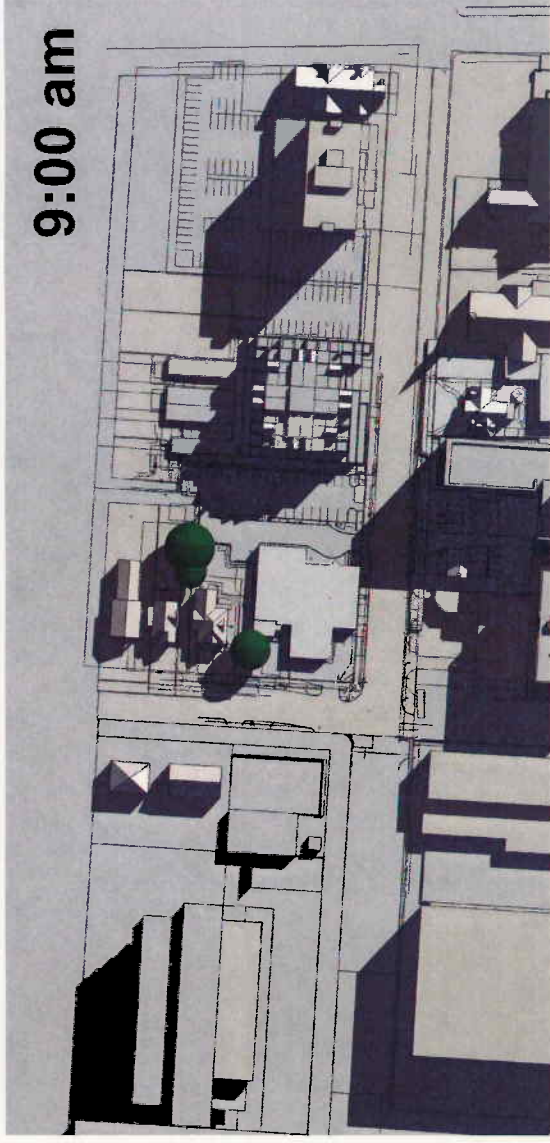
ANN ARBOR GREEN PROPERTY OWNER LLC / CARTER
12-14-2012
ANN ARBOR, MI
HPA# 2012327



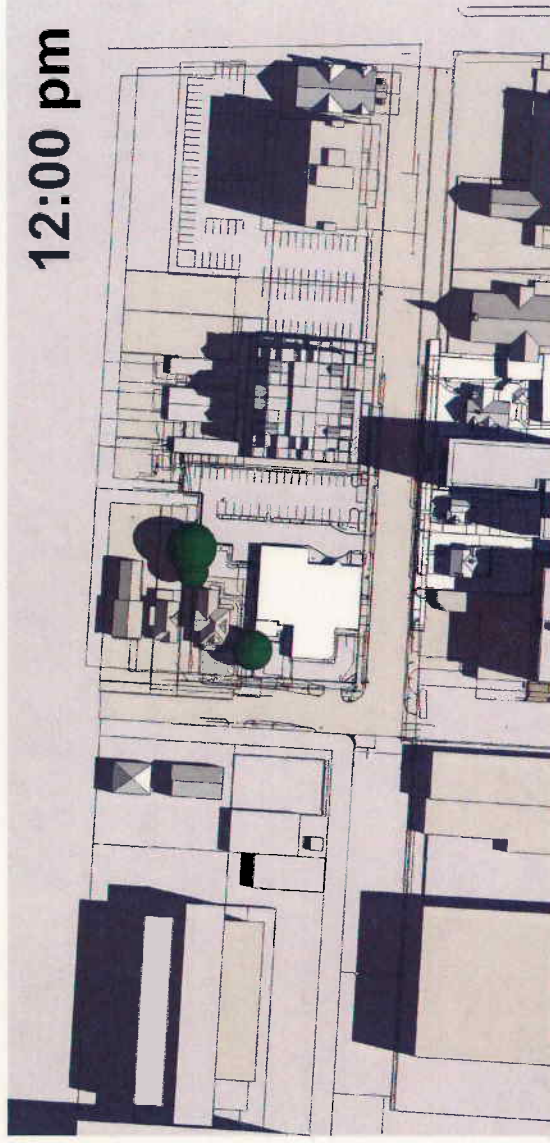
HUMPHREYS & PARTNERS

ARCHITECTS LP
5335 CANTON AVENUE, SUITE 300, ANN ARBOR, MI 48106-1508 (734) 761-9500
ANN ARBOR, MI 48106-1508 (734) 761-9500
ANN ARBOR, MI 48106-1508 (734) 761-9500

9:00 am



12:00 pm

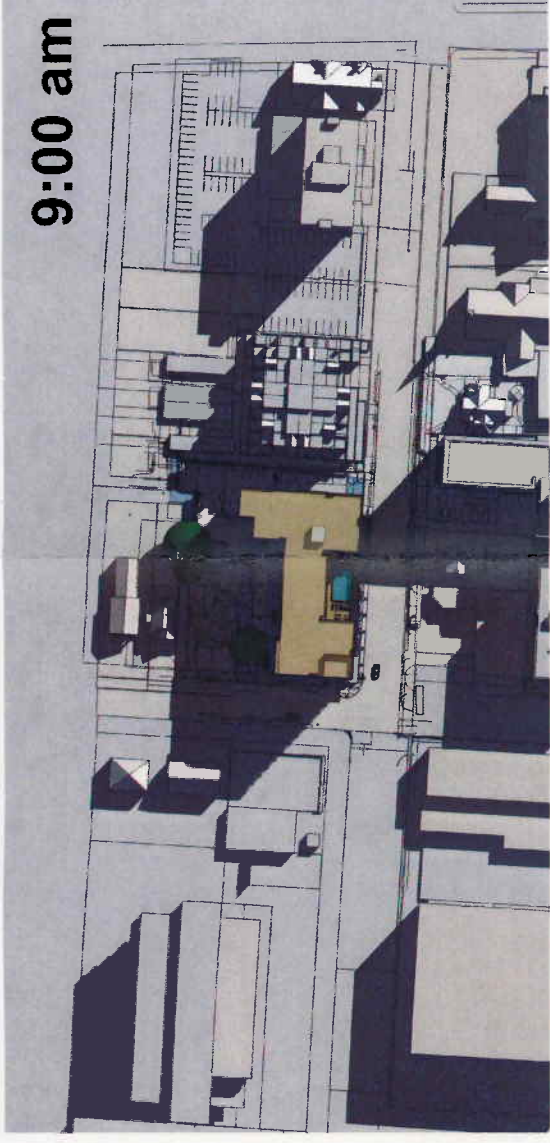


3:00 pm

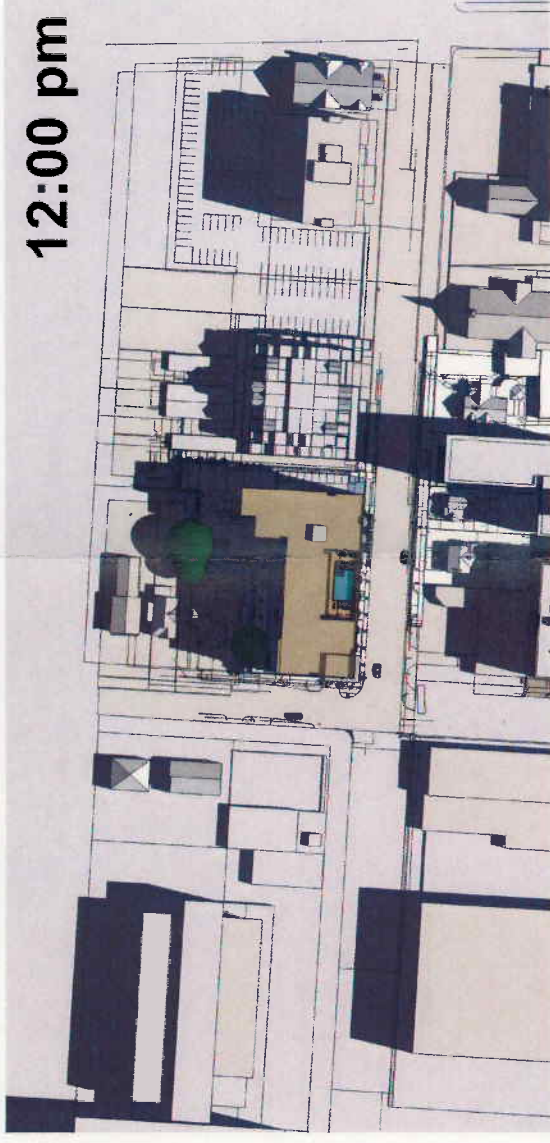


September 21st

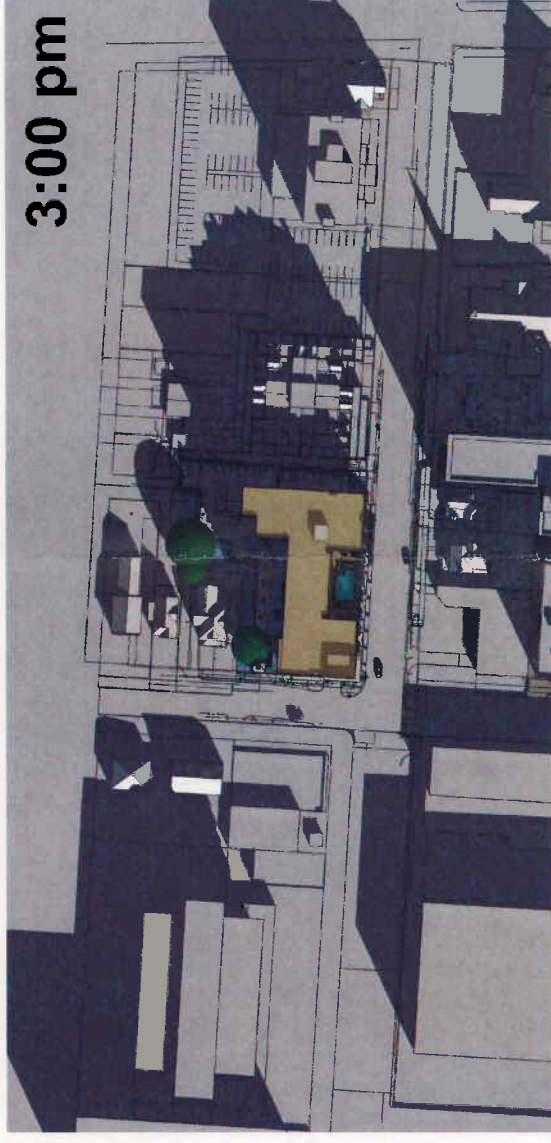
9:00 am



12:00 pm



3:00 pm



September 21st

© HUMPHREYS & PARTNERS
The arrangements depicted herein are the sole property of Humphreys & Partners Architects, LP and may not be reproduced in any form without its written permission.

PARTNERS
Architectural conceptual site plans are for feasibility purpose only. Revisions may occur due to further investigation from regulatory authorities and building code analysis. Dimensions shown are of a strategic intent only. Refer to surveys and civil drawings for technical information and measurements.

413 E. HURON ST.

ANN ARBOR GREEN PROPERTY OWNER LLC / CARTER

12-14-2012

ANN ARBOR, MI

HPA# 2012327



HUMPHREYS & PARTNERS

ARCHITECTS L.P.
5200 Alamo Road, Suite 300, Dallas, TX 75242 (972) 761-9636 (972) 761-9636
www.humphreys.com info@humphreys.com
DALLAS MIAMI NEW ORLEANS SAN ANTONIO SEATTLE



9:00 am



12:00 pm



3:00 pm

December 21st



9:00 am



12:00 pm



3:00 pm

December 21st

413 E. HURON ST.

ANN ARBOR GREEN PROPERTY OWNER LLC / CARTER
 12-14-2012 ANN ARBOR, MI
 HPA# 2012327



HUMPHREYS & PARTNERS ARCHITECTS LP
 440 New York Ave., Suite 300, Detroit, MI 48201 (313) 963-9600
 10000 Park Ave., Suite 1000, Dallas, TX 75244 (972) 781-9600
 10000 Park Ave., Suite 1000, Dallas, TX 75244 (972) 781-9600

HUMPHREYS & PARTNERS
 The arrangements depicted herein are for feasibility purpose only. Revisions may occur due to further investigation from regulatory authorities and building code analysts. Dimensions shown are of a strategic intent only. Refer to surveys and civil drawings for technical information and measurements.

© The arrangements depicted herein are the sole property of Humphreys & Partners Architects, LP and may not be reproduced in any form without its written permission.