



Washtenaw County Parks and Recreation Commission

MEMORANDUM

TO: Washtenaw County Parks and Recreation Commission
THROUGH: Robert I . Tetens, Director
FROM: Agricultural Lands Preservation Advisory Committee (AIPAC)
DATE: April 9, 2013
RE: **Recommendation for property acquisition from Round 2 Nominations**

Ordinance No. 128 established the Natural Areas Preservation Program to preserve and protect unique natural areas within Washtenaw County and charged the Parks and Recreation Commission with responsibility for implementing the program. The Ordinance also established the Agricultural Lands Preservation Advisory Committee in 2010 to serve as an advisory body to assist the Parks and Recreation Commission in consideration of potential property for acquisition under the farmland portion of this program .

2011 marked Round 1 of nominations to the farmland portion of the County's Natural Areas Preservation Program. As a result of this round, *the first projects under this program were closed March 14, 2013, totaling 206 acres (Bailo Family Partnership/Doris Arms Bailo Trust)*. Forty-nine percent (49%) of the acquisition price was contributed by the Federal Farm and Ranchland Protection Program (FRPP). Salem Township assisted in this project through completion of the required Baseline Documentation.

As of fall 2012, which marked Round 2 of nominations, 72 applications are under consideration, totaling over 6500 acres. All properties remain under consideration unless withdrawn by the landowner. Fourteen new properties were submitted in 2012. Each property submitted was reviewed according to the Scoring and Evaluation Criteria developed by the Committee and adopted by the Commission. Based upon that review, the following recommendation was developed by the Agricultural Land Preservation Advisory Committee at their January 22, 2013 meeting:

Highest Priority: Proceed with negotiations as appropriate for acquisition of development rights.

B. Haeussler Farm	165 acres	Freedom Township
H. Koenn Farm	255 acres	Sylvan Township
R. Schneider Farm	69 acres	Iodi Township
M. Skowronski Property	78 acres	Freedom Township
Bassett/Deloof Farm	156 acres	Freedom Township
A. Sullivan Trust Farm	91 acres	Webster Township
Kaiser/Koker Farm	108 acres	lyndon Township
Rockol Farm	172 acres	Northfield Township
Frey Farm	125 acres	Lima Township

Second Priority: Of high interest, acquire if partnership or collaboration is possible.

R. Cort Farm	100 acres	Salem Township
--------------	-----------	----------------

Third Priority: Of high interest, requires additional research.

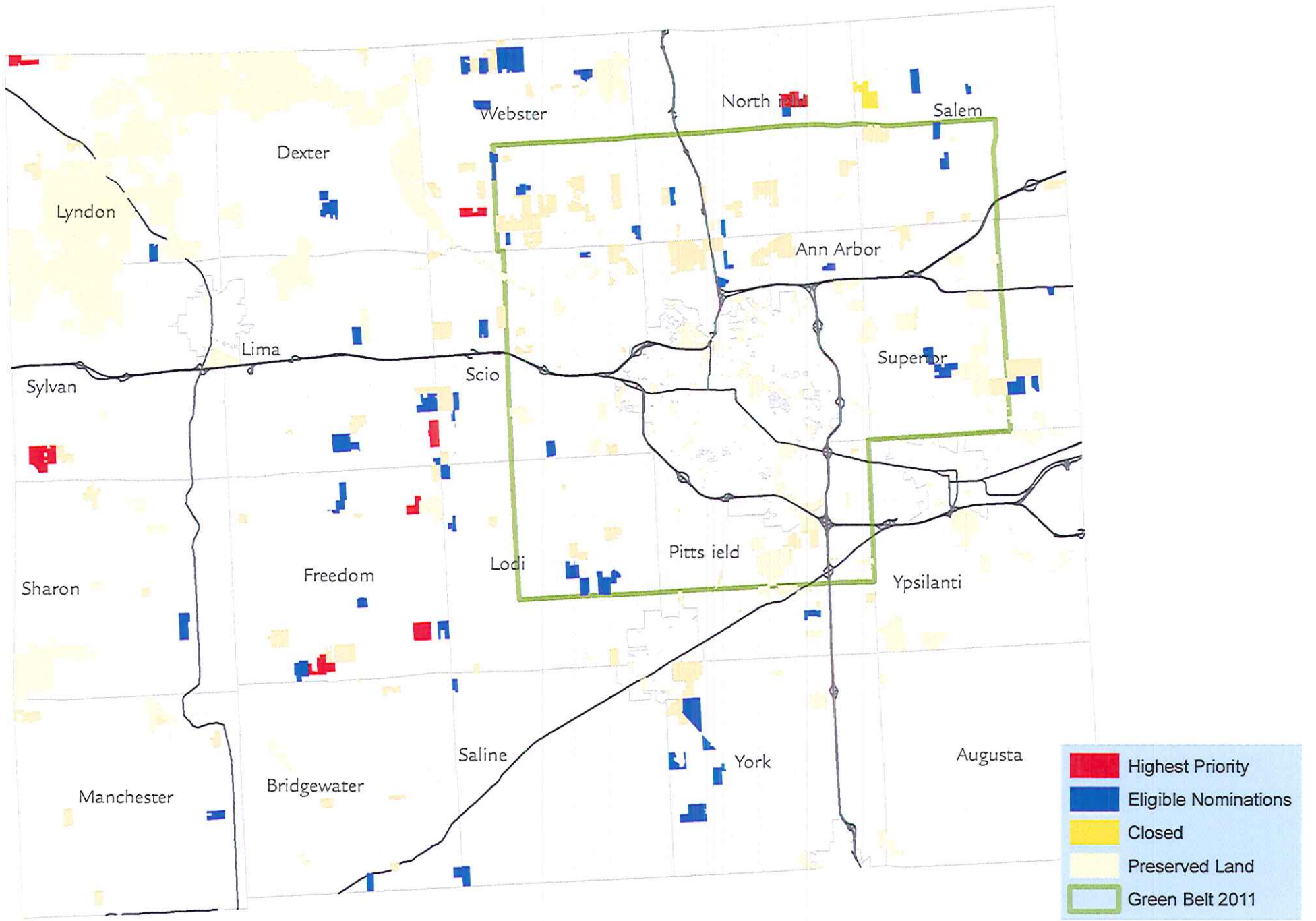
E. Heller	115 acres	Freedom Township
Kelley Trust	72 acres	Webster Township
Kuhl Farm	136 acres	Sharon Township
B. Haeussler	82 acres	Freedom Township
	38 acres	Saline Township
Frey Farm	81 acres	Lima Township
Korte Farm	123 acres	Bridgewater Township
Letts Farm	48 acres	Webster Township
K. Koch Farm	42 acres	Scio Township
C. Estleman	116 acres	Webster Township
R. Schultz Farm	140 acres	Superior Township
	48 acres	Superior Township
Guenther Farm	176 acres	Lodi Township
	78 acres	Lodi Township
Linton Farm	40 acres	Northfield Township
Marhofer/Campbell LLC	74 acres	Dexter Township
Egeler Trust	81 acres	Scio Township
Hochstetler Farm	121 acres	Freedom Township
Ruhlig Estate	96 acres	Dexter Township
Faust Farm	161 acres	York Township
Ponte Farm	58 acres	Pittsfield Township
Otto Farm	70 acres	Webster Township
Wittla Farm	62 acres	Salem Township
Schumacher Farm	102 acres	Lodi Township
Birchmeier Farm	42 acres	Lodi Township
Depp Farm	75 acres	Manchester Township
Blossom Farm	73 acres	Webster Township
Lee and Knepper	21 acres	Lima Township
S. Trinkle Farm	75 acres	Lima Township
White Farm	67 acres	Scio Township
Rooker Farm	40 acres	Northfield Township
Wilfinger	91 acres	York Township
Visel	43 acres	Ann Arbor Township
Moore	24 acres	Scio Township
C. Braun	38 acres	Northfield Township
	41 acres	Ann Arbor Township
Rasmussen Farm	62 acres	Bridgewater Township
Bauer Farm	79 acres	Lyndon Township
Bosco Farm	64 acres	Salem Township
Miller Farm	52 acres	Freedom Township
Fulkerson Farm	26 acres	Salem Township
Bohnett Farm	136 acres	York Township
Lupi Farm	44 acres	Bridgewater Township
Zelisse Farm	28 acres	Superior Township

A. Frey Farm	68 acres	Scio Township
Farrell Farm	55 acres	Webster Township
Heldt Farm	67 acres	Webster Township
Saline Valley Farms	76 acres	York Township

Lowest Priority: Withdraw for further consideration at this time.

Daratony	53 acres	Webster Township
----------	----------	------------------

The Agricultural Lands Preservation Advisory Committee presents the above recommendation for your consideration. The Committee is available to address any questions you may have concerning the recommendation and members can be available to attend a Commission meeting. In addition, Committee members have indicated they are willing to assist in discussions with property owners, working with staff or Corporation Counsel when appropriate, if the Commission so directs.



Washtenaw County Parks & Recreation Commission
 NAPP Farmland Nominations
 Highest Priority. Round 2

