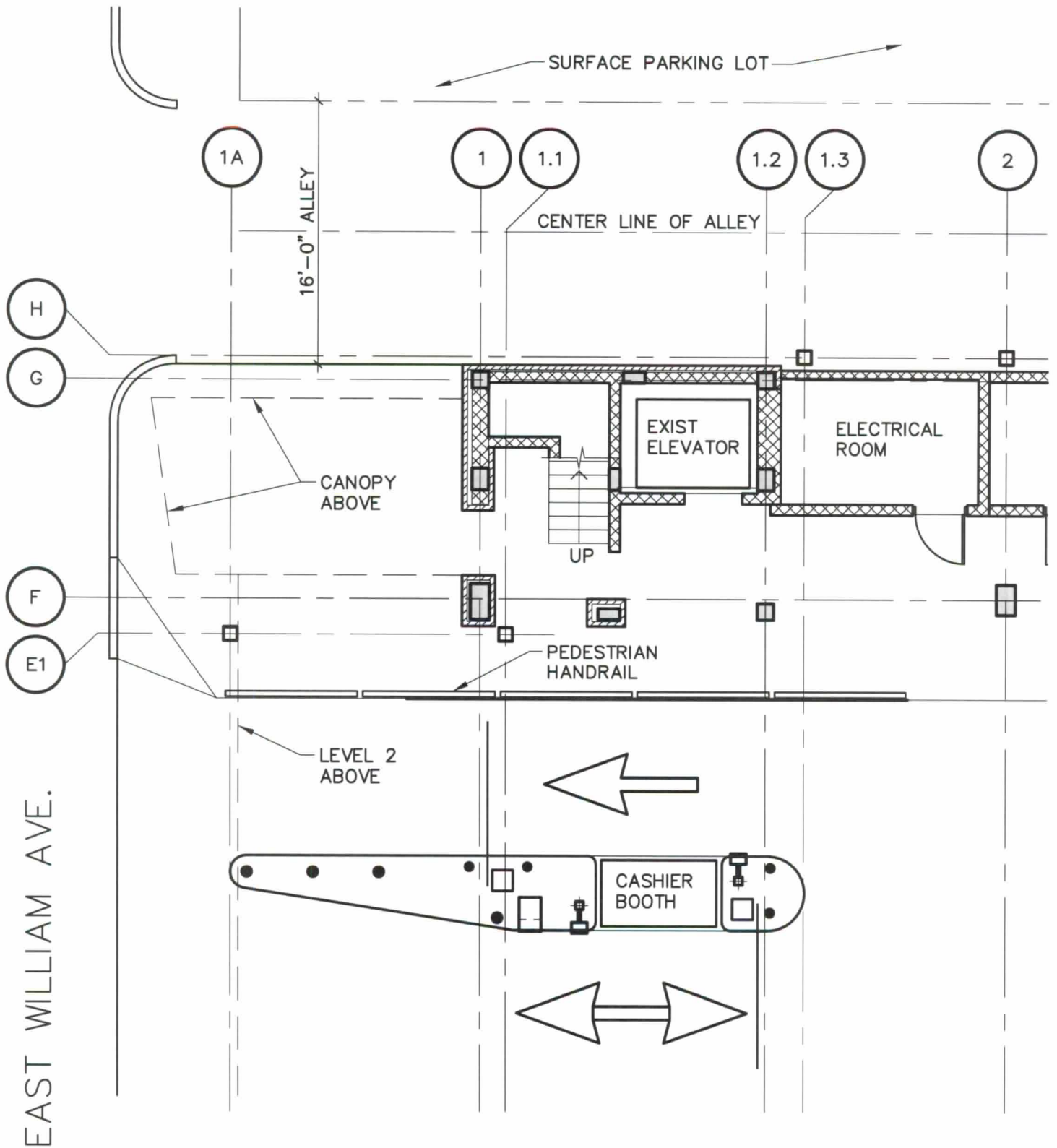




City of Ann Arbor, MI
4th and William Elevator Study
02.26.14

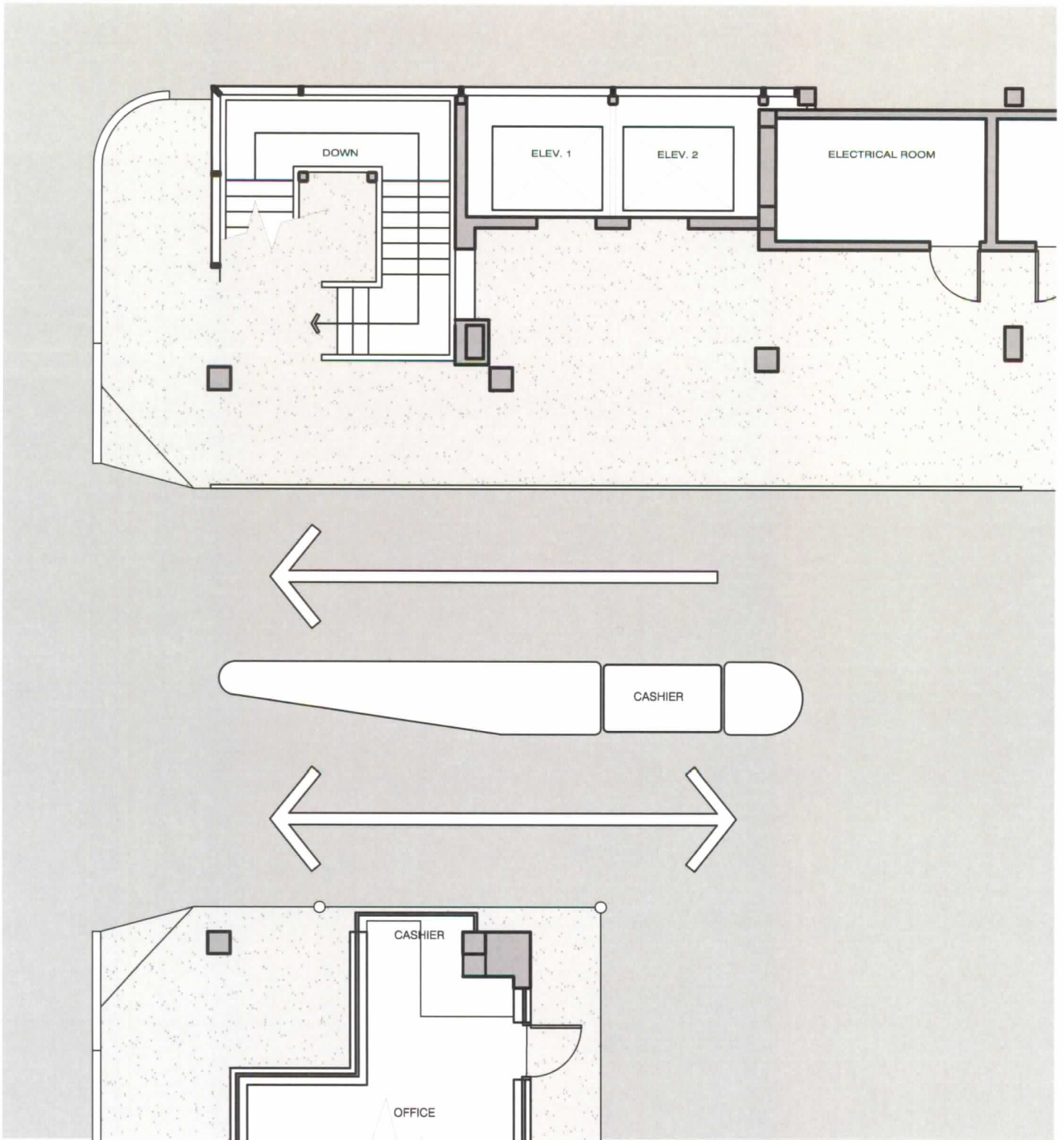
Carl Walker, Inc
Planning Engineering Restoration

Luckenbach | Ziegelman Architects, PLLC
Consulting Architect



Existing Ground Floor
 1/8" = 1'-0"

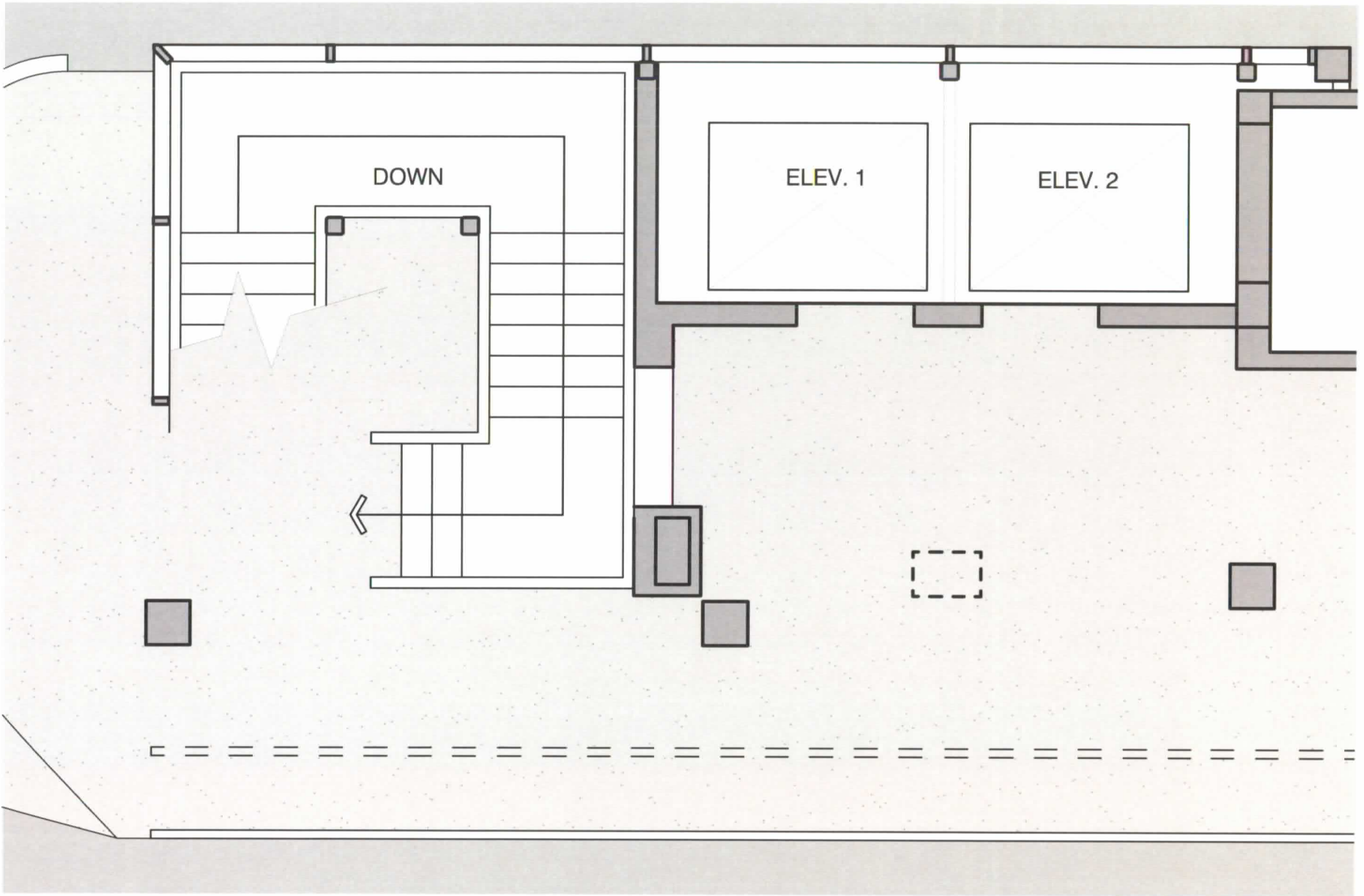




Proposed Ground Floor

1/8" = 1'-0"





Proposed Ground Floor
 1/4" = 1'-0"





West Elevation

NO SCALE

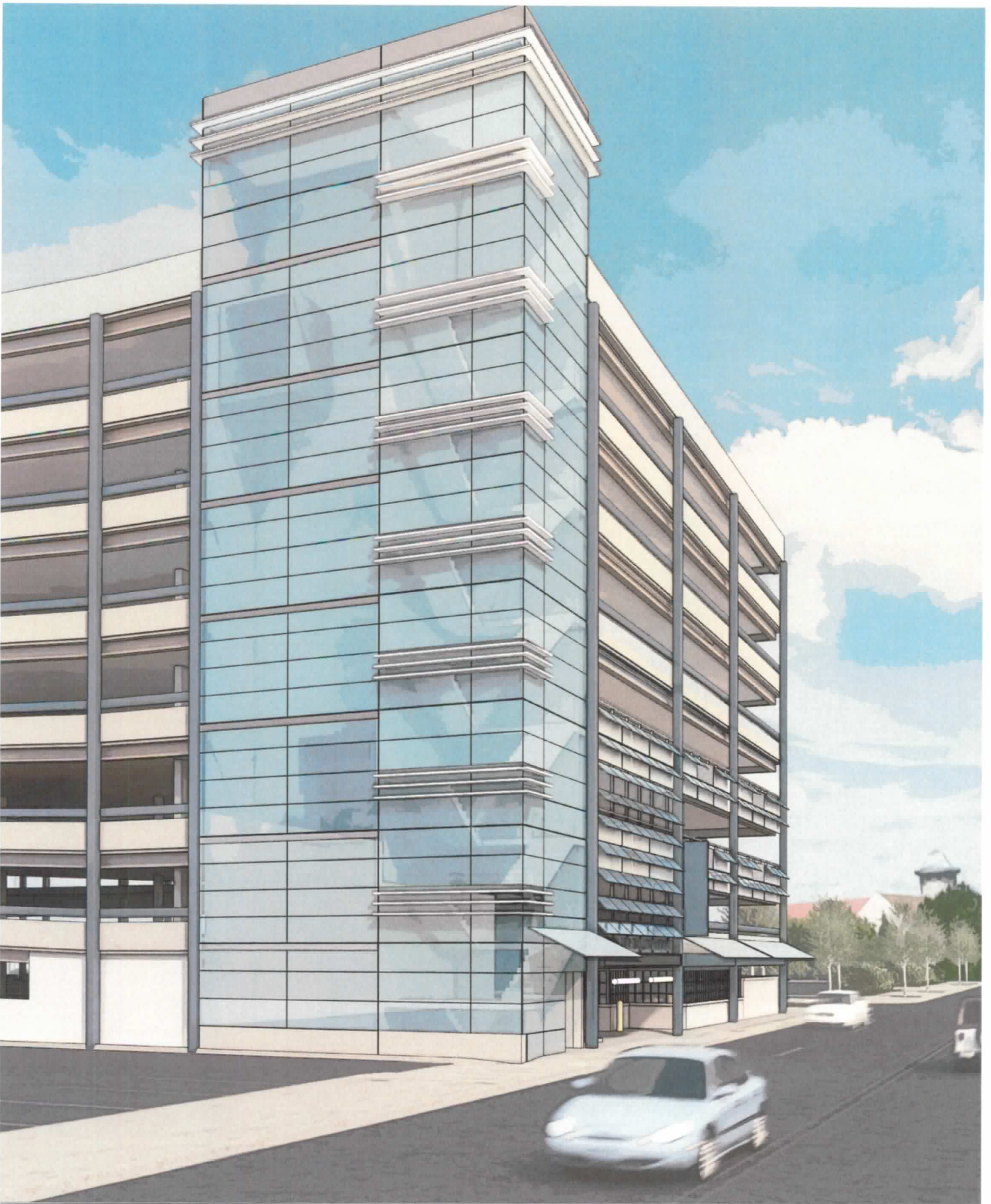
City of Ann Arbor, MI
4th and William Elevator Study
02.26.14

Carl Walker, Inc
Planning Engineering Restoration

Luckenbach | Ziegelman Architects, PLLC
Consulting Architect



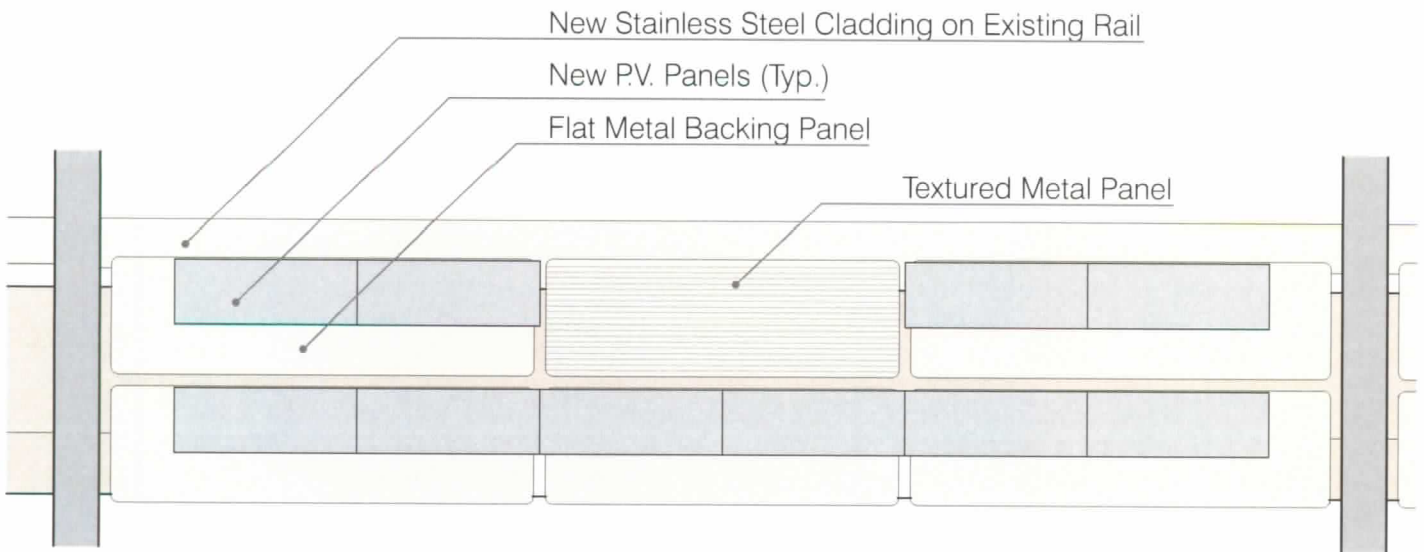
South Elevation
NO SCALE



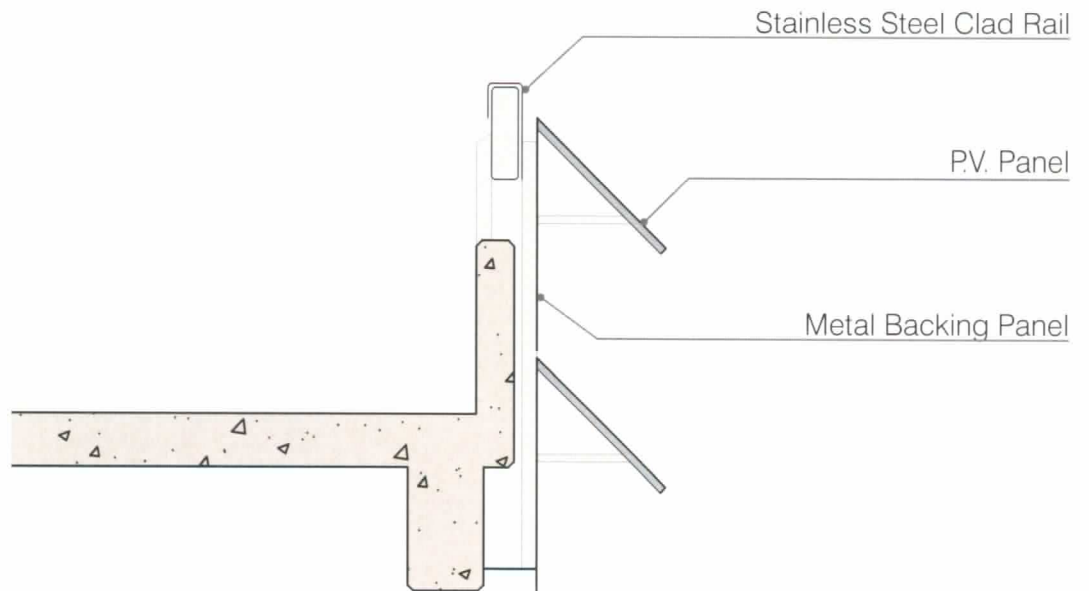
City of Ann Arbor, MI
4th and William Elevator Study
02.26.14

Carl Walker, Inc
Planning Engineering Restoration

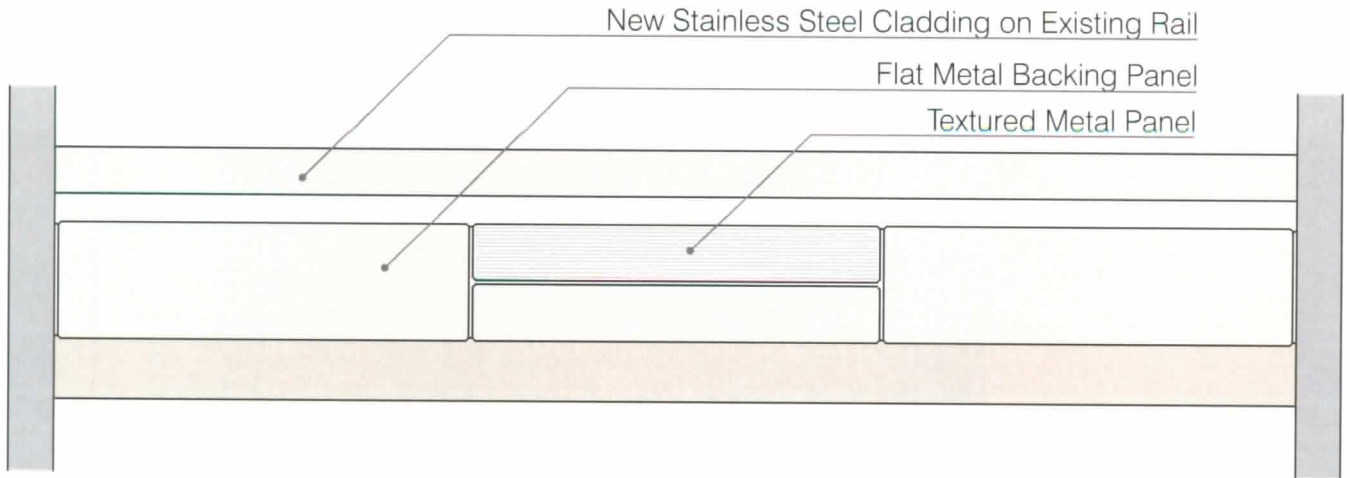
Luckenbach | Ziegelman Architects, PLLC
Consulting Architect



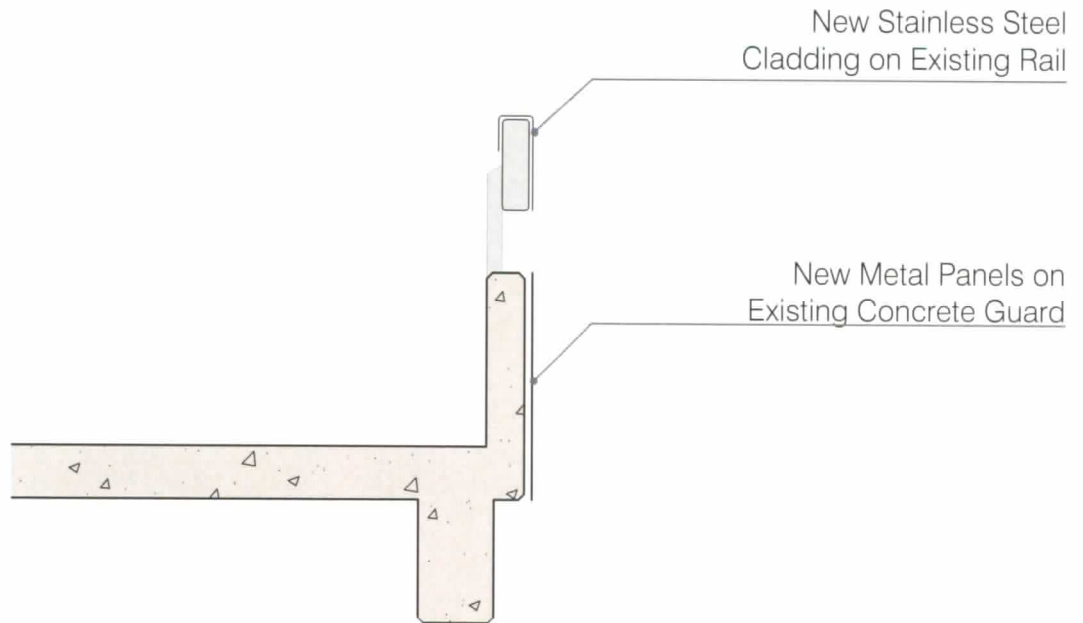
South Wall Solar Panels
 1/4" = 1'-0"



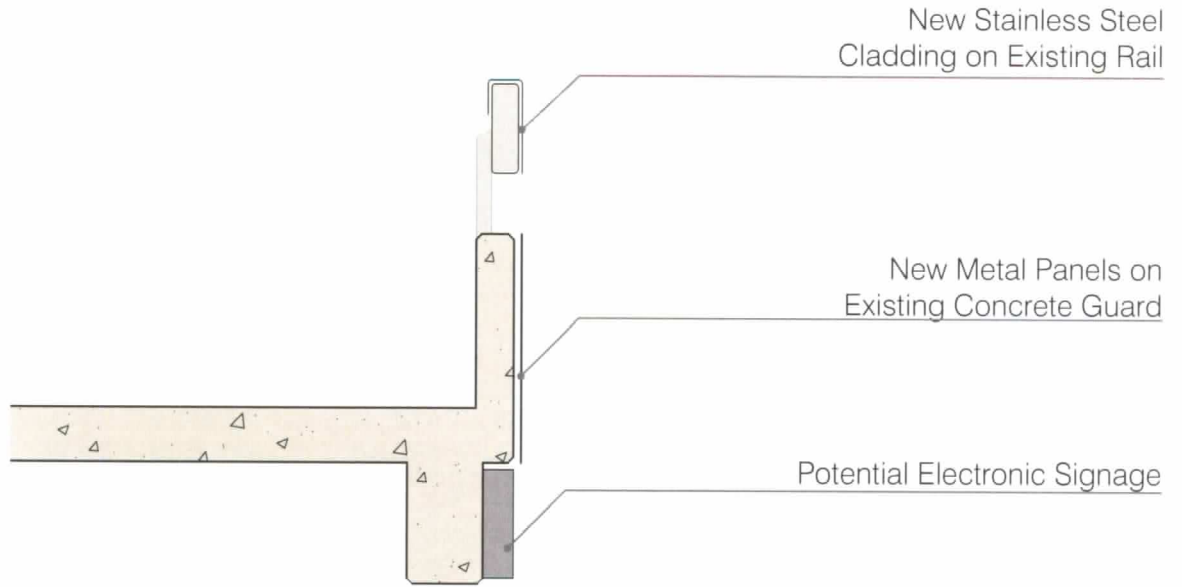
Section at Solar Panels
 1/2" = 1'-0"



Typical Metal Cladding
 1/4" = 1'-0"

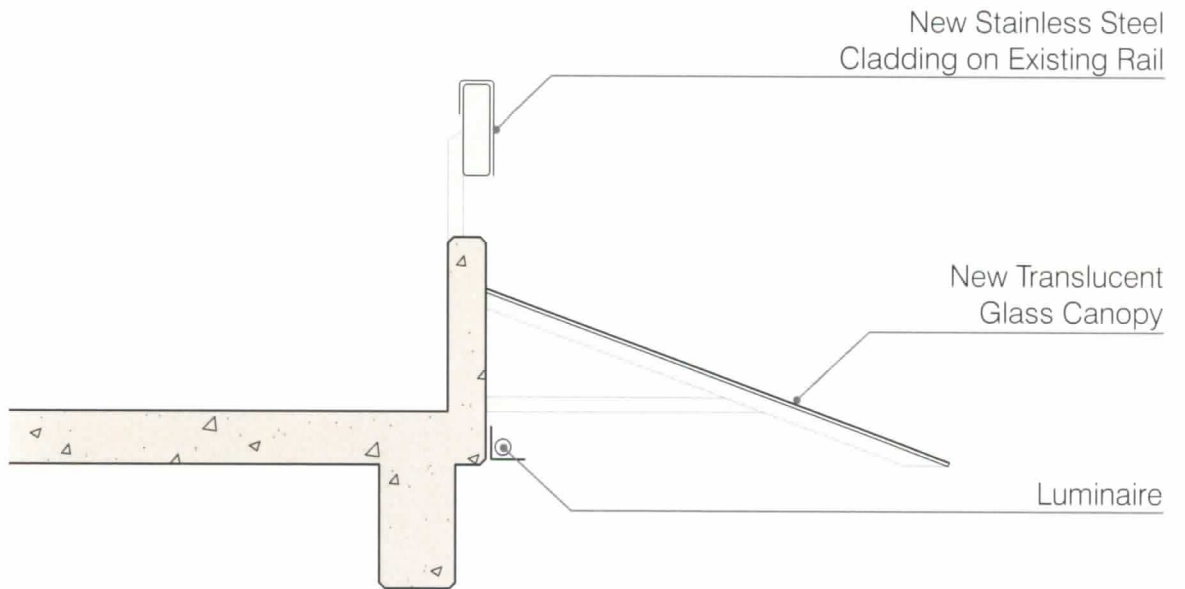


Typical Clad Guard Wall
 1/2" = 1'-0"



Second Floor Section at Signage

1/2" = 1'-0"



First Floor Section at Canopy

1/2" = 1'-0"



East Elevation

NO SCALE



East Elevation

NO SCALE