



# OFFICE OF COUNTY TREASURER

200 N. MAIN STREET, SUITE 200, PO BOX 8645  
ANN ARBOR, MI 48107-8645 PHONE: (734) 222-6600 FAX: (734) 222-6632  
[taxes@ewashtenaw.org](mailto:taxes@ewashtenaw.org)

CATHERINE McCLARY, CPFO  
TREASURER

*December 2009*

**To: Washtenaw County Accommodation Ordinance Commission**

**From: Catherine McClary, Treasurer**

*This report covers Accommodation taxes collected in January 2010 for the month of December 2009 and prior. The Washtenaw County Treasurer's Office received the following accommodation excise tax remittances. This is an excise tax due by the 15th of each month and equal to 5% of the total charge for accommodations for the preceding month.*

<b><i>Tax Distribution:</i></b>	<b><i>Current</i></b>	<b><i>Year to Date</i></b>
<b><i>Total Taxes Collected:</i></b>	\$178,802.81	\$3,039,773.68
<b><i>Washtenaw County:</i></b>	\$17,880.28	\$160,928.82
<b><i>Net Distribution:</i></b>	\$160,922.53	\$2,878,844.86
<b><i>Ann Arbor Area Convention and Visitors Bureau:</i></b>	\$120,691.90	\$2,159,133.64
<b><i>Ypsilanti Area Convention and Visitors Bureau:</i></b>	\$ 40,230.63	\$719,711.21

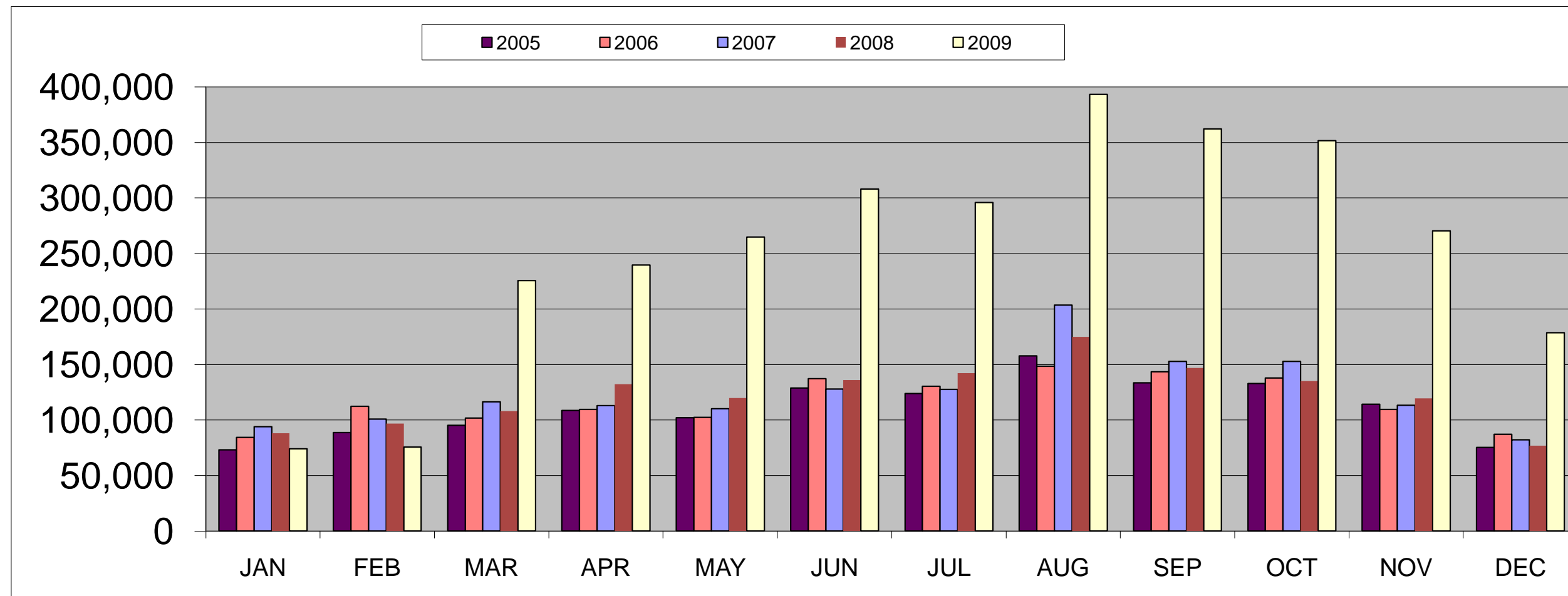
## ***Notes:***

Hawthorn Suites	Delinquent from Jan/09 through June/11/09, Treasurer spoke several times with accountant and receiver.
Microtel Inn & Suites	A partial payment of the court judgment received in Oct/09, delinquent from Jan/09 through Dec/09, beginning the legal proceeding.
Sleep Inn & Suites	December payment not received yet, spoke w/general manager.
Victory Inn & Suites	December payment not received yet, spoke w/controller.
Ann Arbor B & B	Received Mar/09 pmt in Jan/10, delinquent from Apr/09 thru Dec/09.
Bella Nina Guest Suite	Delinquent from Oct/09 through Dec/09, sent a letter.
Burnt Toast Inn	Delinquent from Nov/09 through Dec/09, sent a letter.
Davies House B & B	No payments received, not returned phone calls for appointment.
Gotta Scrap Inn	Delinquent from Oct/09 through Dec/09, sent a letter.
Lyndon Oaks B & B	Delinquent from Oct/09 through Dec/09, sent a letter.
Queen's Residence B & B	December 09 payment not received yet, sent a letter.
Red Arrow Motel	Delinquent from Oct/09 through Dec/09, sent a letter.
Vitoshia Guest Haus	Delinquent from Nov/08 through Dec/09, beginning legal proceeding.

## Washtenaw County Accommodation Tax Collections 1998-2009

	JAN	FEB	MAR	APR	MAY	JUN	JUL	AUG	SEP	OCT	NOV	DEC	Annual Total	% Change
<b>1998</b>	64,622.18	74,426.97	78,225.23	80,430.52	95,354.04	110,967.36	108,791.54	116,137.87	109,063.82	106,329.43	89,685.55	65,404.88	<b>\$1,099,439.39</b>	<b>8.48%</b>
<b>1999</b>	74,386.64	76,354.21	97,024.03	98,748.85	107,817.42	119,762.36	117,327.21	129,672.15	115,841.40	118,384.78	94,592.80	77,015.25	<b>\$1,226,927.10</b>	<b>11.60%</b>
<b>2000</b>	80,224.44	86,268.62	102,733.39	98,811.47	113,693.75	127,554.94	124,886.12	146,019.66	128,957.83	130,877.35	100,116.44	71,695.46	<b>\$1,311,839.47</b>	<b>6.92%</b>
<b>2001</b>	82,731.97	84,363.71	101,795.45	105,463.95	107,627.87	124,731.58	122,790.06	148,879.79	96,086.61	110,688.01	95,731.29	63,954.45	<b>\$1,244,844.74</b>	<b>-5.11%</b>
<b>2002</b>	79,412.70	86,717.69	97,571.48	105,611.53	109,957.03	124,705.62	117,366.31	153,047.97	105,145.14	122,269.78	95,716.94	62,224.71	<b>\$1,259,746.90</b>	<b>1.20%</b>
<b>2003</b>	73,967.43	73,437.57	89,450.99	98,612.67	90,650.36	114,223.95	124,285.60	146,237.66	118,238.05	121,258.54	93,230.78	61,762.36	<b>\$1,205,355.96</b>	<b>-4.32%</b>
<b>2004</b>	72,920.04	76,873.08	88,715.13	107,958.28	103,452.03	122,028.82	122,075.20	145,997.69	132,439.75	124,334.19	106,963.06	74,230.85	<b>\$1,277,988.12</b>	<b>6.03%</b>
<b>2005</b>	73,179.91	88,707.67	95,230.76	108,640.62	102,174.47	129,034.07	123,905.16	157,877.52	133,575.53	133,040.50	114,187.39	75,378.48	<b>\$1,334,932.08</b>	<b>4.46%</b>
<b>2006</b>	84,530.97	112,440.93	101,868.80	109,739.75	102,528.14	137,180.45	130,500.10	148,344.95	143,552.19	137,852.13	109,676.56	87,192.95	<b>\$1,405,407.92</b>	<b>5.28%</b>
<b>2007</b>	93,921.30	100,728.63	116,496.15	112,894.67	110,154.11	128,007.64	127,667.07	203,682.44	152,702.97	152,702.97	113,404.88	82,339.15	<b>\$1,494,701.98</b>	<b>6.35%</b>
<b>2008</b>	88,095.19	96,847.04	108,098.74	132,268.21	119,954.45	135,935.42	142,176.28	174,811.46	146,969.05	135,088.30	119,414.82	76,885.63	<b>\$1,476,544.59</b>	<b>-1.21%</b>
<b>2009</b>	74,007.19	75,574.58	225,618.12	239,717.52	264,746.84	307,997.47	295,891.23	393,129.13	362,148.45	351,686.23	270,454.11	178,802.81	<b>\$ 3,039,773.68</b>	<b>105.87%</b>

### MONTHLY COMPARISON



Note: The Accommodation excise tax has been increased from 2% to 5% effective on March 1, 2009.

Prepared by:

Catherine McClary, CPFO  
 Washtenaw County Treasurer  
 200 N. Main, Suite 200  
 PO Box 8645  
 Ann Arbor, MI 48107-8645  
[taxes@ewashtenaw.org](mailto:taxes@ewashtenaw.org)