



SECTION IV: INVENTORY OF THE PARK, RECREATION AND OPEN SPACE SYSTEM

The City's park, recreation, and open space inventory includes City-owned parks, natural areas, and recreational facilities. In addition to City-owned parks and open space, Ann Arbor residents have access to open space owned by the Ann Arbor Public Schools, the University of Michigan, neighboring townships, Washtenaw County Parks and Recreation, and State of Michigan land. Some of these facilities are located within the City's boundaries; others are located throughout Washtenaw County. Non-City owned park and recreational resources accessible to the greater Ann Arbor community are important to understanding the extent of park and recreational opportunities for Ann Arbor residents; therefore, they are listed as separate inventories within this section of the PROS Plan.

A. Park Inventory Overview

In 2010, the City's parks, recreation, and open space holdings were comprised of 157 parks and facilities (two of which are leased), totaling approximately 2,088 acres of land. The properties include approximately 492 turf acres, 48 buildings, 34 ball diamonds, 31 tennis courts, 10 soccer fields, 75 playground areas, 87 picnic areas, approximately 52 miles of multi use paths, four swimming pools, two artificial ice rinks, hiking and nature trails, two 18-hole golf courses, and two canoe liveries. Approximately 72 percent of the land is unstructured and serves as open space, with approximately 697 acres of woodlands, 478 acres of green space, 200 acres of shrub land, as well as wetlands, savannas, prairies, and bogs, while some 800 acres of Huron River water surface are accessible with strategically located boat launching sites. Special facilities include a senior center, two community centers, historic houses, a farm, and a cemetery.

Furthermore, over 50 traffic islands and boulevards, which are often considered components of public open space, are maintained by the Public Services Area.

B. Park and Open Space Classification

The PROS Plan classifies park holdings by size, level of use, type of recreation experience, degree of naturalness, and location within the City. These classifications aid Parks and Recreation in determining land acquisitions, levels of maintenance, planning for amenities in the various parks, and balancing the recreation needs throughout the City.

These classifications, however, are not always clear cut, and overlap in several instances. Several community-wide parks, for example, also serve as neighborhood parks for the residents who live in close proximity. The classifications are meant as a guide for staff and the public to understand the breadth and scope of the park system.

The classification system includes the following:

1. Neighborhood Parks

Neighborhood parks provide open space areas within approximately one-quarter mile of each resident. These areas are generally smaller in size and designed to attract a limited population. Parking is generally along the street. Typical amenities include a playground, basketball or tennis court, open grassy play areas, park benches and picnic tables, and a walk to access the park amenities. Examples of neighborhood parks include Meadowbrook, Windemere, Esch, Hollywood, and Waterworks.

2. Urban Parks/Plazas

Urban parks and plazas provide open space and pedestrian-oriented amenities in the downtown area where the surrounding population includes high-density residential and commercial districts. These areas are defined by the presence of a significant infrastructure, a greater formality, and furniture to serve a greater density of people at peak times. The plazas are generally the smallest type of park in the system and are designed to integrate with the urban setting. Plazas are characterized by harder materials such as concrete, contained flower beds, and a lack of open grassy areas and play equipment. Residents and downtown employees utilize these areas as a gathering space for eating and work breaks and often serve as a location for public art and performances. They ideally function in concert with the surrounding businesses, especially restaurants and cafes, where a cooperative effort energizes the physical space. Examples of urban plazas include Liberty Plaza, Sculpture Plaza, and Forsythe Park.

3. Recreation Facilities

Recreation facilities serve a defined use or program which may be more specific or serve a limited segment of the population. Their use and access are generally more tightly controlled. These facilities vary in size and character depending on the intended use. Examples of these facilities include the Leslie Park and Huron Hills golf courses, the Farmers Market, Fairview Cemetery, the pools and ice rinks, senior center and canoe liveries.

SECTION IV: Inventory of the Park, Recreation and Open Space System

4. Historic Sites

The purpose of labeling an area as an historic site is both to protect it and to describe its significance for interpretive programming. These facilities may be located within parks, such as the West Park Bandshell, or encompass the entire facility, such as the Kempf House. Although the facilities are historic, they often serve multiple purposes. Cobblestone Farm, for example, has both an historic house and a newly constructed barn. Although the house is used purely as an historic showcase, the barn, which was built as part of the farm, is used as a multipurpose facility for parties, meetings, and weddings. The older facilities require special care in their maintenance and daily use. The facilities are open to the public; however, some limitations are placed on their use due to their fragile nature. Additional examples of historic sites include the Leslie Homestead and the Greek Revival Shelter at Island Park.

5. Community-wide Parks

Community open space serves the recreational needs of the greater Ann Arbor community by offering diverse opportunities in a more natural setting. These spaces are often much larger than neighborhood parks and can accommodate greater numbers of people for a wide variety of uses. The goal is for these spaces to be accessible by public transportation but also provide parking facilities and other amenities such as restrooms and shelters. These open spaces are distributed as evenly as possible throughout the City. Typical amenities include scheduled softball or soccer fields, picnic shelters, playground areas, and recreation facilities within the park. Examples of this type of open space include Fuller Park, Buhr Park, and Veterans Memorial Park.

6. Natural Areas

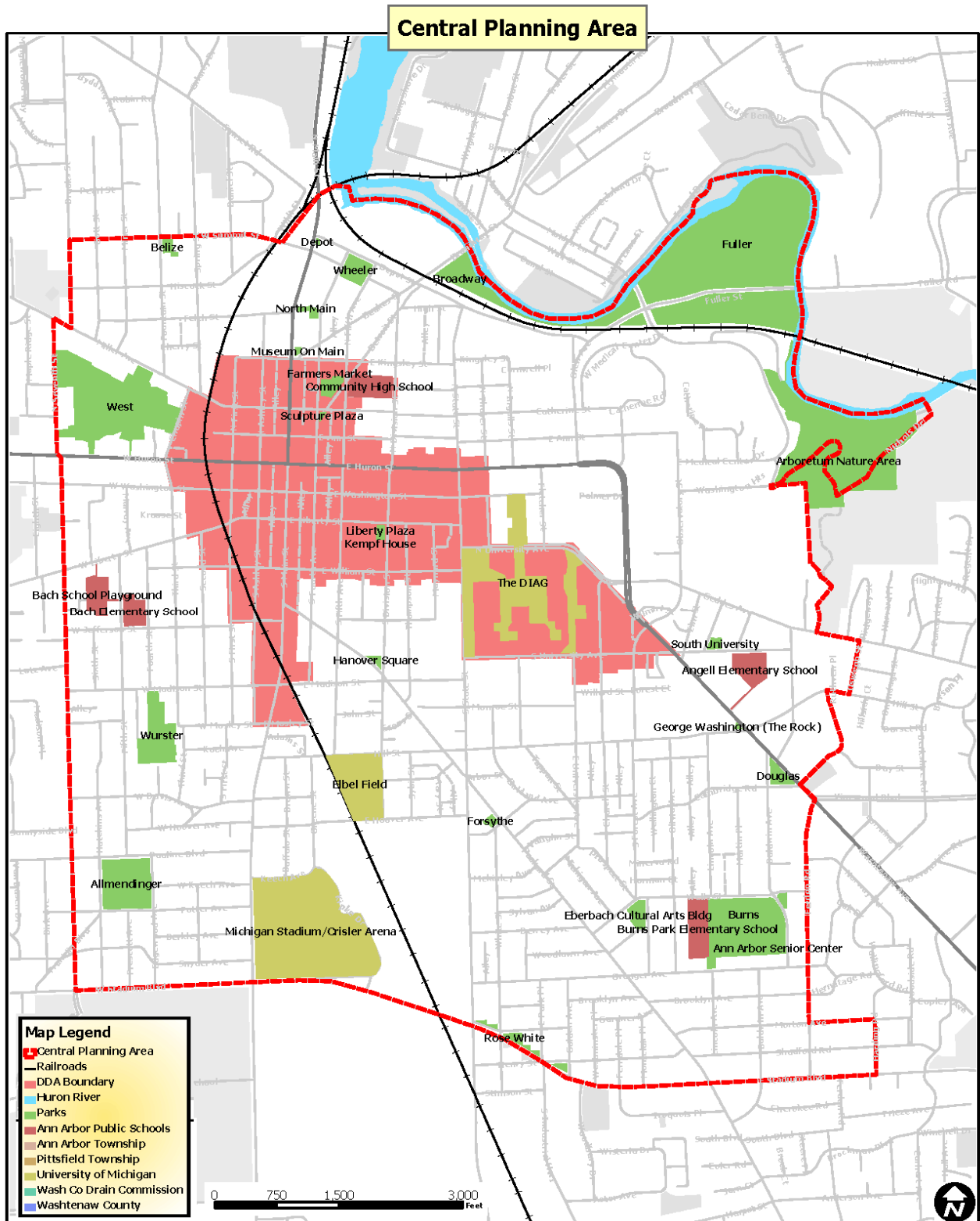
The classification of natural area provides for protection of the City's most significant natural resources. Natural areas are managed by the Natural Area Preservation division to improve their ecological integrity. Typical activities for this purpose include invasive plant removal, prescribed burning, and seeding or planting of native species. These activities may be performed by the City or by volunteers acting under the guidance of City staff. Wildlife inventory information about birds, butterflies, frogs, and salamanders are collected to help guide land management decisions.

Some of the natural areas that are of higher floristic quality or have sensitive ecological qualities, such as steep slopes or a rare species of plant or animals, have limitations on use. Bicycles, for example, are prohibited in several natural areas. Examples include Bird Hills, Furstenberg and Black Pond Nature Areas.

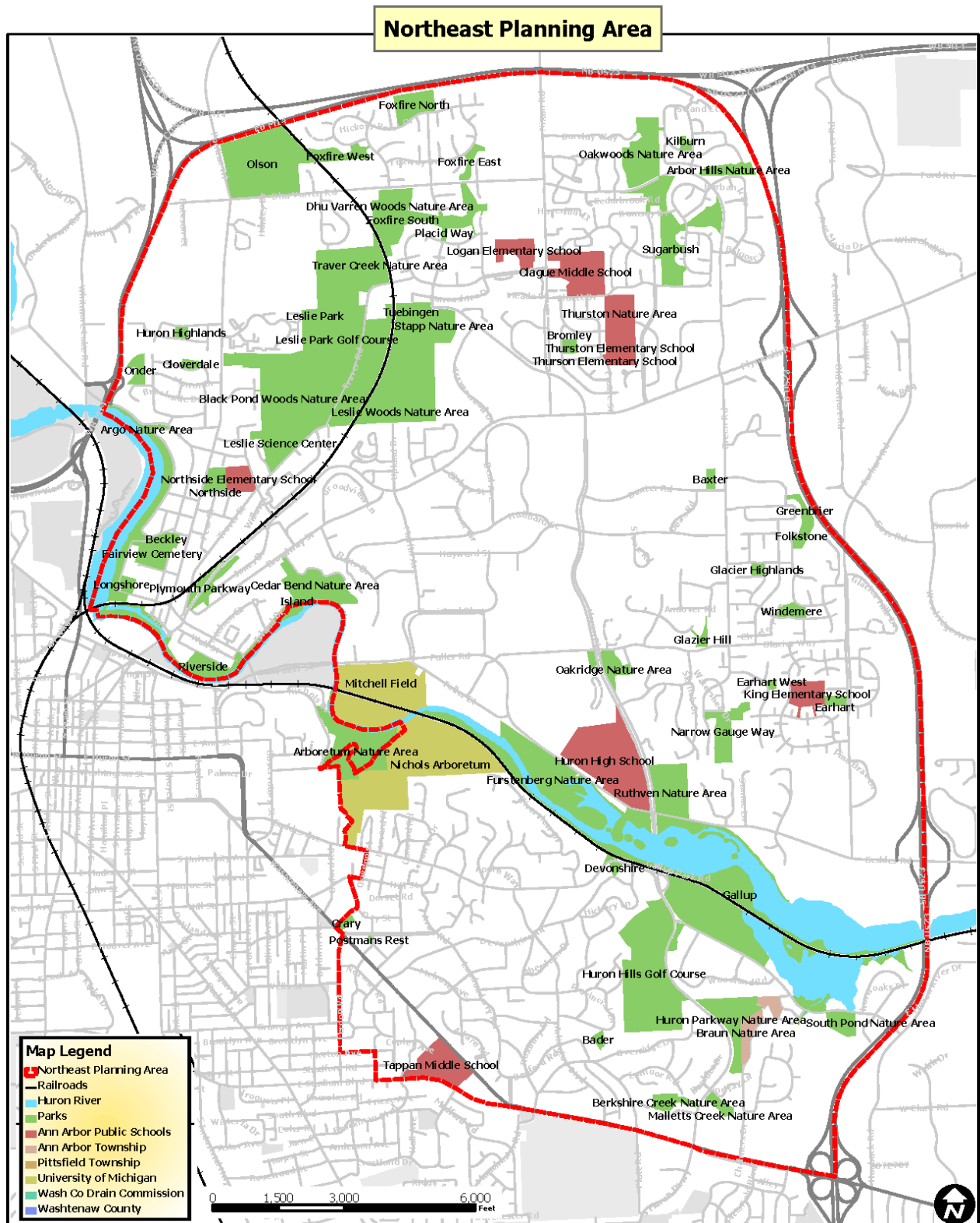
C. Planning Area Maps

The following series of maps show the park system and other open space, including public schools, university property, and county park property in the City by planning area.

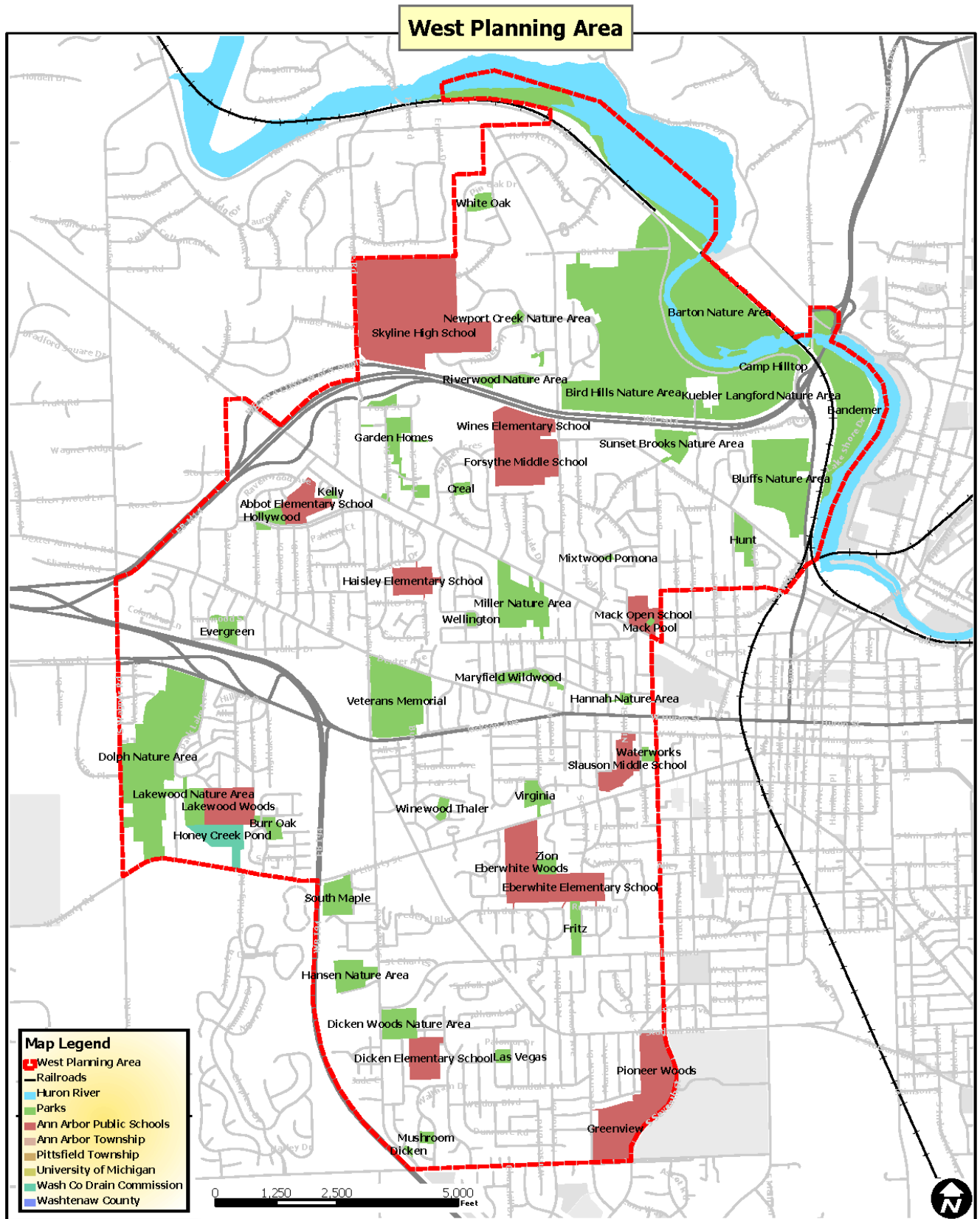
SECTION IV: Inventory of the Park, Recreation and Open Space System



SECTION IV: Inventory of the Park, Recreation and Open Space System



SECTION IV: Inventory of the Park, Recreation and Open Space System



SECTION IV: Inventory of the Park, Recreation and Open Space System

D. Facility Listing

Ann Arbor Senior Center, 1320 Baldwin Aveue

The Ann Arbor Senior Center is located in the Burns Park neighborhood and provides meeting space for programming that includes enrichment and educational classes, fitness programs, social programs, entertainment and special events.

Argo Canoe Livery, 1055 Longshore Drive

The facility provides canoe and kayak rentals and consists of a livery building, storage yard, and picnic shelter. Day camps are also run out of the livery and focus on river activities for teens.

Bryant Community Center, 3 West Eden Court

The Bryant Community Center is a multi-use building that provides space for youth and adult programs, community meetings, health clinics, and day camps. It is managed by the Community Action Network.

Buhr Pool and Ice Arena, 2751 Packard Road

Buhr Pool includes a zero depth tot pool with spray toys and a 25-yard lap pool. The facility offers day camps, swim classes and swim teams, as well as public swim time. The ice arena is an NHL regulation size covered outdoor facility whose activities include public ice skating, drop-in hockey, league play, and rental hours. There are four separate locker rooms, a heated lobby, and vending.

Cobblestone Farm, 2781 Packard Road

The farm includes an 1845 classic revival style cobblestone farmhouse and a replica barn used for special events, weddings and rentals. The site houses farm animals and provides interpretive programming. The Parks and Recreation Customer Service center is located within the barn.

Farmers Market, 315 Detroit Street

The market facilities include an office and meeting room as well as restrooms. There are 144 vendor stalls under the market shed structure. The market operates Saturdays the entire year, and Wednesdays from May 1 to December 31. Parking is leased to the Downtown Development Authority when the market is not in operation.

Fuller Pool, 1519 Fuller Road

Fuller Pool consists of a 50-meter lap pool, a zero depth tot pool, and a water slide. There are locker rooms, a picnic shelter, and restrooms. The facility runs day camps, Masters Swimming, swim teams, swim classes, as well as public swim time.

Gallup Canoe Livery, 3000 Fuller Road

The Gallup Canoe Livery rents canoes, kayaks, and pedal boats. A café and meeting room are located in the livery building. Camps, special events, and open hours for the public are offered at this facility.

Huron Hills Golf Course, 3465 East Huron River Drive

Huron Hills is an 18-hole, par 67 course located along the Huron River. The facility includes adult and junior golf instruction, special events, league play, and open golfing.

Kempf House, 312 South Division Street

The Kempf House is a local history museum with a focus on the Victorian era (1850-1910) and Ann

SECTION IV: Inventory of the Park, Recreation and Open Space System

Arbor History. The museum offers guided tours for individuals and groups and is used for special events and monthly lectures.

Leslie Park Golf Course, 2120 Traver Road

Leslie Golf Course is a championship 18-hole, par 72 golf course and was recently ranked as the Golf Digest best municipal golf course in the State of Michigan. It is located along Traver Creek, in the northern part of Ann Arbor. The facility includes adult and junior golf instruction, special events, league play and open golfing.

Leslie Science and Nature Center (LSNC), 1831 Traver Road

The center contains 50 acres of fields, woodlands and prairie, as well as the Leslie Homestead, Critter House, office space, and Nature House. The LSNC became a 501c3 to afford better fundraising opportunities. Parks maintains the grounds and buildings. The Leslie Homestead was donated to the City in 1976, and runs camps and events, including a raptor center and programs focusing on environmental education.

Mack Pool, 715 Brooks Street

Mack Pool is connected to the Ann Arbor Open School at Mack and contains a six-lane, 25-yard pool for adults, a 30-foot by 40-foot children's pool, locker rooms, and pool office. The school uses the pool for students during school operating hours. Programs include Masters, swimming lessons, aquatic exercise classes and public swim.

Northside Community Center, 809 Taylor Street

The center is managed by Community Action Network and runs programs for youth and adults. The facility contains meeting rooms, offices, and restrooms.

Veterans Pool and Ice Arena, 2150 Jackson Avenue

Veterans Ice Arena contains a regulation 85' by 200' ice rink with spectator seating for 2,000, locker rooms, skate rental, concession area, and fitness room. Programs include ice hockey leagues and skating instruction, open skating, and special events. The 25-yard pool contains a waterslide and zero depth tot pool area with spray toys. Programs include swimming lessons, lap swim, and swim teams.

SECTION IV: Inventory of the Park, Recreation and Open Space System

E. Ann Arbor Parks Inventory Chart

The following chart shows the vast array of parks and activities offered by the City of Ann Arbor. It also summarizes the degree to which the parks are barrier free.

Park Inventory	Acreage	Play Area	Basketball	Tennis	Softball	Baseball	Soccer	Disc Golf Course	BMX Course	Trails	Paved Multi-use Path	Picnic Tables	Shelters	Restrooms	Drinking Fountain	Natural Area	Swimming Pool	Ice Rink	Canoe Rental	Parking	Barrier Free Accessibility	Other	
Allmendinger	7.89	•	•	•	2						•	•		•	•					•	2		
Ann Arbor Senior Center	0.58														•	•					•	3	
Arbor Hills Nature Area	5.95									•						•						1	
Arbor Oaks	3.23	•	•								•	•	•		•							3	
Arboretum Nature Area	33.46									•					•	•						4	
Argo Nature Area	22.34									•	BW	•	•	•	•	•			•	•	•	2	BL
Bader	1.64	•	•		•		•					•										3	
Bandemer	40.89							•	•	•	•	•	•	p	•	•					•	3	CD
Barton Nature Area	99.10									•		•		p		•					•	3	
Baxter	1.99	•	•									•										3	
Beckley	3.20	•									•	•										2	
Belize	0.51	•										•			•							2	
Berkshire Creek Nature Area	5.32															•						1	
Bird Hills Nature Area	146.05									•						•					•	2	
Black Pond Woods Nature Area	32.21									•						•					•	2	
Bluffs Nature Area	41.02									•						•						1	MB
Broadway	3.78										•	•										4	
Bromley	2.32	•										•										5	
Brookside	0.70	•										•										3	
Bryant Community Center	0.23	•										•		•	•							5	
Buhr	42.25	•		2	4		•					•		•	•		•	•			•	3	SP
Burns	14.24	•	•	4	2		•					•	•	•	•						•	3	
Burr Oak	3.29	•										•										3	
Cedar Bend Nature Area	19.03									•						•					•	2	
Churchill Downs	1.18	•	•				•					•			•							3	
Clinton	4.82	•	•	2	•							•			•							3	
Cloverdale	1.72	•	•									•										3	
Cobblestone Farm	3.69													•							•	5	
Cranbrook	18.05	•	•	•							•	•				•						4	
Crary	1.30																					2	
Creal	1.71	•	•		•							•			•							5	
Depot	0.07																					2	
Devonshire	1.16										•					•						2	
Dhu Varren Woods Nature Area	13.58									•						•						1	
Dicken	0.42																					1	
Dicken Woods Nature Area	9.76									•						•						2	
Dolph Nature Area	56.70									•		•		p		•					•	2	
Douglas	1.07											•										3	
Earhart	2.22															•						1	
Earhart West	0.90											•				•						1	

SECTION IV: Inventory of the Park, Recreation and Open Space System

Park Inventory	Acreage	Play Area	Basketball	Tennis	Softball	Baseball	Soccer	Disc Golf Course	BMX Course	Trails	Paved Multi-use Path	Picnic Tables	Shelters	Restrooms	Drinking Fountain	Natural Area	Swimming Pool	Ice Rink	Canoe Rental	Parking	Barrier Free Accessibility	Other	
Eberbach Cultural Arts Bldg	1.20													•	•					•	4		
Eberwhite Nature Area	2.25									•												1	
Eisenhower	10.22															•						1	
Ellsworth	4.20	•	•									•	•		•							4	
Esch	4.49	•	•		•							•			•							3	
Evergreen	4.90	•								•						•						4	
Fairview Cemetery	8.65																					1	
Farmers Market	1.06													•	•						•	4	
Folkstone	3.17									•	•					•						1	
Forest Nature Area	18.99									•	BW					•					•	1	
Forsythe	0.31		•									•			•							4	
Foxfire East	3.14									•						•						1	
Foxfire North	10.64	•	•				•					•										3	
Foxfire South	19.13															•						1	
Foxfire West	7.67															•						1	
Frisinger	3.60	•			•							•										4	
Fritz	4.98	•								•	•					•						3	
Fuller	57.03	•					7				•	•		•	•	•	•				•	5	
Furstenberg Nature Area	37.64									•	BW	•		•	•	•					•	5	
Gallup	51.39	2								•	•	•	2	•	2	•			•	•	•	4	BL
Garden Homes	11.45	•									•	•				•						4	
George Washington (The Rock)	0.08																					4	
Glacier Highlands	1.66	•	•									•										4	
Glazier Hill	1.72															•						2	
Greenbrier	3.18	•								•	•	•		•	•							3	
Hannah Nature Area	1.14															•						1	
Hanover Square	0.28																					3	
Hansen Nature Area	9.55	•								•	•				•							2	
Hilltop Nature Area	7.75									•	•				•							1	
Hollywood	3.55															•						1	
Hunt	6.75	•	•	•	•							•	•	•	•							2	
Huron Highlands	1.59	•										•										4	
Huron Hills Golf Course	116.23													•	•							•	3
Huron Parkway Nature Area	19.32									•						•						1	
Iroquois	0.19											•										1	
Island	5.63	•									•	•	3	•	•						•	3	
Kelly	0.55	•																				3	
Kempf House	0.13													•								4	
Kilburn	1.52	•										•										3	
Kuebler Langford Nature Area	29.97									•						•					•	1	
Lakewood Nature Area	7.20									•						•						1	
Lansdowne	2.48	•	•				•					•										4	
Las Vegas	1.75	•	•									•			•							3	
Lawton	5.27						•															3	
Leslie Park	38.96	2	2	3	2		•			•	•	•		p							•	3	

SECTION IV: Inventory of the Park, Recreation and Open Space System

Park Inventory	Acreeage	Play Area	Basketball	Tennis	Softball	Baseball	Soccer	Disc Golf Course	BMX Course	Trails	Paved Multi-use Path	Picnic Tables	Shelters	Restrooms	Drinking Fountain	Natural Area	Swimming Pool	Ice Rink	Canoe Rental	Parking	Barrier Free Accessibility	Other	
Leslie Park Golf Course	149.65													•	•					•	3		
Leslie Science Center	14.69									•		•		•	•	•					•	2	
Leslie Woods Nature Area	23.17									•						•						1	
Liberty Plaza	0.26											•			•							3	
Longshore	2.27	•										•										2	
Mack Pool	0.31													•	•		•				•	3	
Malletts Creek Nature Area	3.20															•						1	
Manchester	1.17																					2	
Marshall Nature Area	84.49									•						•					•	1	
Mary Beth Doyle	80.86	•	•							•	•	•				•					•	3	•
Maryfield Wildwood	4.74	•	•		•							•			•	•						3	
Meadowbrook	2.17	•	•									•										3	
Mill Creek	0.95																					1	
Miller Nature Area	22.53									•						•						1	
Mixtwood Pomona	0.34	•										•										3	
Molin Nature Area	7.11									•						•						1	
Museum On Main	0.15																				•	3	
Mushroom	1.54	•										•										3	
Narrow Gauge Nature Area	13.50									•												1	
Newport Creek Nature Area	0.99									•						•						1	
North Main	0.47	•										•										3	
Northside	5.21	•	•	•	•	•	•					•	•	•	•							3	
Oakridge Nature Area	7.90									•						•						1	
Oakwoods Nature Area	22.54									•						•						1	
Olson	53.76	•	•				•			•	•	•	•	•	•	•	•				•	3	MB
Pilgrim	1.35	•	•									•			•							3	
Pittsview	0.58																					2	
Placid Way	1.31	•									•	•									•	3	
Plymouth Parkway	6.02	•									•	•										3	
Postmans Rest	0.23											•										3	
Redbud Nature Area	5.11									•						•						1	
Redwood	0.54										•											4	
Riverside	9.48	•			•						•	•		p							•	4	
Riverwood Nature Area	4.82															•						1	
Rose	2.35	•									•	•									•	4	
Rose White	1.17	•										•			•							3	
Ruthven Nature Area	20.57									•						•						1	
Scarlett Mitchell Nature Area	49.11									•						•						2	
Scheffler	5.82	•	•		•							•		p	•						•	3	RH
Sculpture Plaza	0.09											•										4	
South Maple	10.25	•		2	•							•			•						•	3	
South Pond Nature Area	15.75									•						•						1	
South University	0.44		•									•										2	
Southeast Area	28.02	2	•		2	2				•	•	•	•	•	•	•	•				•	4	
Stapp Nature Area	8.11									•						•						1	

SECTION IV: Inventory of the Park, Recreation and Open Space System

Park Inventory	Acreeage	Play Area	Basketball	Tennis	Softball	Baseball	Soccer	Disc Golf Course	BMX Course	Trails	Paved Multi-use Path	Picnic Tables	Shelters	Restrooms	Drinking Fountain	Natural Area	Swimming Pool	Ice Rink	Canoe Rental	Parking	Barrier Free Accessibility	Other		
Stone School	4.62									•					•							1		
Sugarbush	30.12	2	•	2	•		•					•			•								4	
Sunset Brooks Nature Area	7.82									•					•								1	
Sylvan	12.00	•		•						•		•			•								3	
Terhune Pioneer Cemetery	0.90																						1	
The Ponds	2.26	•										•			•								2	
Traver Creek Nature Area	5.09									•					•								1	
Tuebingen	7.08														•								1	
Turnberry	8.25	•										•			•								3	
Veterans Memorial	36.77	•		3	4	•				•		•	•	•	•		•	•		•	•		4	
Virginia	4.97	•	•	•	•		•					•			•								3	
Ward	5.81	•								•		•											2	
Waterworks	1.48	•										•											3	
Waymarket	2.93	•										•											3	
Wellington	1.19	•									•	•											4	
West	23.13	•	•	2		•				•	•	•		•	•	•				•		•	5	BS
Wheeler	1.93	•	•								t	•		•	•								3	
White Oak	3.12	•								•		•			•								3	
Winchell	3.56	•			•		•					•											3	
Windemere	3.96	•		2	•		•				•	•											3	
Winewood Thaler	1.75	•	•									•			•	•							3	
Woodbury	2.11	•	•	2								•			•								3	
Wurster	5.91	•					•				•	•			•								3	
TOTAL ACREAGE	2033.92																							

Other Items Key: SP - Swimming pool, MB - mountain bike, BL - boat launch, P - portable restroom, BS - Band shell, RH - Roller Hockey, BW - Boardwalk

Barrier Free Access Key:

- 1 = none of the facilities/park areas meet accessibility guidelines
- 2 = some of the facilities/park areas meet accessibility guidelines
- 3 = most of the facilities/park areas meet accessibility guidelines
- 4 = the entire park meets accessibility guidelines
- 5 = the entire park was developed/renovated using principles of universal design

SECTION IV: Inventory of the Park, Recreation and Open Space System

F. Ann Arbor Public Schools Inventory

The Ann Arbor Public Schools have 32 sites, including elementary, middle, and high schools. The school grounds contain open spaces used by the public, including ball fields, play areas, and nature areas with trails.

Public School Facilities	Acreage	Play Area	Basketball	Tennis	Softball	Baseball	Soccer	Natural Area	Swimming Pool	Parking	Artificial Turf Field	Other
ELEMENTARY SCHOOL SITES												
Abbot School	12.00	•	•	•	•	•	•	•	•	•	•	•
Allen School	10.50	•	•				•			•		•
Angell School	3.00	•	•				•			•	•	•
Ann Arbor Open School at Mack	7.00	•	•	•			•		•	•		•
Bach School	7.80	•			•	•				•		•
Bryant School	7.40	•	•				•			•		•
Burns Park School	4.00	•	•				•			•		•
Carpenter School	11.00	•	•	•	•	•	•			•		•
Dicken School	10.00	•			•	•	•			•		•
Eberwhite School	42.20	•	•		•	•	•	•		•		•
High Point Preschool and Family Center	40.00	•	•					•		•		•
Haisley Elementary School	10.00	•	•		•	•	•	•		•		•
Martin Luther King Jr. Elementary School	9.96	•	•							•		•
Lake Wood Elementary School	18.00	•			•	•		•		•		•
Lawton Elementary School	7.70	•	•				•			•		•
Logan Elementary School	9.75	•	•				•			•		•
Mitchell Elementary School	10.00	•	•		•	•	•	•		•		•
Northside Elementary School	7.76	•	•		•	•	•			•		•
Pattengill Elementary School	11.33	•	•				•			•		•
Pittsfield Elementary School	4.00	•	•		•	•	•			•		•
Thurston Elementary School	24.75	•	•		•	•	•	•		•		•
Wines Elementary School	10.00	•	•		•	•	•			•		•
MIDDLE SCHOOL SITES												
Clague Middle School	23.50	•			•	•	•	•		•		•
Forsythe Middle School	26.00	•	•	•	•	•	•			•		•
Scarlett Middle School	69.70			•	•	•	•	•		•		•
Slauson Middle School	12.00				•		•		•	•		•
Tappan Middle School	20.00			•	•	•	•			•		•
HIGH SCHOOL SITES												
Community High School	3.20									•	•	•
Huron High School	55.50			•	•	•	•		•	•	•	•
Pioneer High School	177.00				•	•	•	•	•	•	•	•
Skyline High School	110.00							•	•			
Stone High School	6.50	•					•			•		•
OTHER FACILITIES												
Pre-School & Family Center		•						•	•			

SECTION IV: Inventory of the Park, Recreation and Open Space System

1. Adjacent School and Public Park Properties

Both the City park system and the Public Schools system share several sites that are utilized by both the community and the students. Sites contain active recreation, such as softball fields, tennis courts, playgrounds, and natural areas.

Adjacent Public School and Park Properties

Park Name	Acreage	School Name	Acreage
Buhr	39	Allen Elementary	10.5
Burns	15	Burns Park Elementary	4
Earhart	2	King Elementary	10
Foxfire North	4	Future School	6
Hollywood	3.6	Abbot Elementary	12
Lakewood Nature Area	7	Lakewood Elementary	18
Lawton	5.3	Lawton Elementary	7.7
Mack Indoor Pool	N/A	Ann Arbor Open at Mack	7
Northside	5.5	Northside Elementary	2.2
Scarlett/Mitchell	25.2	Scarlet Middle/Mitchell Elementary	79.7
Stone School	5	Stone High School	6.5
Stoneybrook	3.1	Bryant Elementary	10.4
Waterworks	2	Slauson	12

SECTION IV: Inventory of the Park, Recreation and Open Space System

2. Recreation Inventory of School and City Program Offerings

Ann Arbor Parks and Recreation Services and the Ann Arbor Public Schools Community Education and Recreation Program jointly offer the following activities to City residents and to families and individuals residing within the Ann Arbor Public School District:

Recreation Program Inventory	Day Camps	Athletic Leagues for Adults	Cultural Arts Programs	Instructional Programs	Adapted Recreation Programs	Special Events	Athletic Activities for Youth	Exercise Classes	Senior Adult Programs	Swim Teams	Environmental Education	Historic Programs
Ann Arbor Parks and Recreation												
Ann Arbor Senior Center			•	•		•		•	•			
Argo Canoe Livery	•			•	•	•	•					•
Bandemer Park				•		•	•					
Bryant Community Center	•			•		•		•				
Buhr Pool and Ice Rink	•	•		•		•	•	•		•		
Cobblestone Farm			•	•		•						•
Farmers Market				•		•						
Fuller Park Pool	•			•		•	•	•				
Gallup Canoe Livery	•			•	•	•						•
Huron Hills Golf Course		•		•		•	•		•			
Kempf House			•			•						•
Leslie Golf Course		•		•		•			•			
Leslie Science and Nature Center	•			•		•	•					•
Mack Indoor Pool				•	•	•				•		
Northside Community Center	•			•		•						
Veterans Pool and Ice Rink	•	•		•		•	•			•		
Community Education & Recreation												
Eberbach Cultural Arts			•	•	•			•				
Public School Buildings		•	•	•	•	•	•					

G. OTHER AGENCY OPEN SPACE INVENTORY

Other public and semi-public agencies provide a significant amount of public space used by the community as they are within close enough proximity that Ann Arbor residents consider them part of the open space/recreation landscape.

Four public agencies that provide recreation and open space opportunities in and around Ann Arbor include the University of Michigan, which owns significant acreage of open space within the City; the Washtenaw County Parks and Recreation Commission, which oversees 13 parks, including natural areas, water parks, golf courses, and parks within the City limits; Huron Clinton Metropolitan Authority (HCMA), which provides large-scale, regional recreation facilities; and the Michigan Department of Natural Resources and Environment, which provides a system of state parks, forests, and recreation and game areas.

SECTION IV: Inventory of the Park, Recreation and Open Space System

Other Agency Parks and Open Space	Acreage	Play Area	Basketball	Tennis	Softball	Baseball	Soccer	Trails	Paved Multi-use Path	Picnic Tables	Shelters	Restrooms	Drinking Fountain	Natural Area	Swimming Pool	Ice Rink	Canoe Rental	Parking	Undeveloped	Other
Washtenaw County Parks and Recreation Commission																				
Cavanagh Lake Park	3.00	•							•		•							•		•
County Farm Park	127.00							•	•	•				•				•		•
Independence Lake	312.00							•		•				•	•					•
Meri Lou Murray Recreation Center														•						•
Park Lyndon	335.00	•						•	•	•				•						•
Park Northfield	12.00	•						•	•	•	•									•
Parker Mill County Park	26.00							•	•	•	•									•
Pierce Lake Golf Course and Park	232.00							•	•	•										•
Osborn Mill	39.00													•						•
Rolling Hill County Park	151.00							•	•		•									•
Sharon Mills	12.00								•	•										•
Staebler Farm	114.00	NOT OPEN TO THE PUBLIC																		
TOTAL ACREAGE	1,363.00																			
Huron-Clinton Metropolitan Authority																				
Delhi Metropark	50.00	•			•			•	•	•	•	•	•	•				•		•
Dexter-Huron Metropark	125.00	•			•			•	•	•	•	•	•	•				•		•
Hudson Mills Metropark	1624.00	•	•	•	•			•	•	•	•	•	•	•				•		•
TOTAL ACREAGE	1,799.00																			
Michigan Department of Natural Resources (MDNR)																				
Pinckney Recreation Area	11000.00	•						•	•	•	•	•	•	•			•	•		•
Waterloo Recreation Area	20500.00	•						•	•	•	•	•	•	•			•	•		•
Chelsea Game Area	654.00							•												•
Gregory Game Area	3400.00							•												•
Sharonville Game Area	3015.00							•												•
University of Michigan Properties																				
Baits Field	1.20																			
Baits Recreation Area	2.10	•	•																	
Base Lake Farms	206.00																			
Diagonal Green	3.70								•											
Dow Field	36.00							•						•						
Elbel Field	7.00	•		•																•
Gordon Hall	70.00																			
Horner-McLaughlin	100.00													•						
Hubbard Woods	6.90													•						
Matthaei Botanical Gardens	377.00							•	•	•		•	•	•				•		•
Mitchell Field	36.00				•	•								•						
Mud Lake	258.00							•						•						
Murfin Playfield	2.80																			
Nichols Arboretum	58.50							•			•		•							
Palmer Field	9.20	•	•						•											
Portage Lake Observatory	147.00																			
Radrick Farms	380.00								•		•	•	•					•		•
Saginaw Forest	80.00							•						•						
Stinchfield Woods	664.00							•						•						•
University Golf Course	183.80																			•
TOTAL ACREAGE	38,569.00																			

SECTION IV: Inventory of the Park, Recreation and Open Space System

H. NEIGHBORING TOWNSHIPS AND CITIES

Communities adjacent to and within the proximity of Ann Arbor provide open space for their residents that are also used by the local community. Trail systems connect some of these park spaces to Ann Arbor, including the Border to Border trail, which aims to link park systems along the Huron River.

Neighboring Townships and Cities	Play Area	Basketball	Tennis	Softball	Baseball	Soccer	Trails	Paved Multi-use Path	Picnic Tables	Shelters	Restrooms	Drinking Fountain	Natural Area	Swimming Pool	Ice Rink	Canoe Rental	Parking	Undeveloped	Other
Ann Arbor Township																			
Braun Park																			•
Pittsfield Township																			
Lillie Park							•		•			•							•
Montibeller Park	•		•		•		•		•		•						•		•
P.G Palmer Park																		•	
Pittsfield Preserve	•						•		•	•			•						
Firehall Park/Township Hall																			•
Township Park & Community Center	•				•				•	•							•		•
Scio Township																			
NO FACILITIES																			
Ypsilanti Township																			
Appleridge	•	•			•				•										
North Hydro Park									•										•
Big Island Park													•						
Ford Lake Park	•		•	•			•	•	•	•	•	•			•		•		•
North Bay Park	•						•		•	•	•								•
Bud and Blossom	•				•				•										
Burns	•		•		•				•										
CC Complex	•		•		•				•	•	•								•
Clubview	•		•		•		•												•
Fairway Hills																			
Ford Heritage																			
Harris Road	•				•				•	•	•								
Lakeside	•								•	•	•								•
Lakeview	•				•				•										
Loon Feather Park	•								•	•	•						•		•
Nancy	•				•				•										
Pines	•				•				•										•
Rambling Road	•	•			•				•										
South Hydro Park									•										•
Sugarbush	•	•			•				•										
Tot Lot	•								•										
Water Tower	•								•										
Southwest Park																		•	

SECTION IV: Inventory of the Park, Recreation and Open Space System

Neighboring Townships and Cities (con't.)	Play Area	Basketball	Tennis	Softball	Baseball	Soccer	Trails	Paved Multi-use Path	Picnic Tables	Shelters	Restrooms	Drinking Fountain	Natural Area	Swimming Pool	Ice Rink	Canoe Rental	Parking	Undeveloped	Other
City of Saline																			
Brecon Park	•	•	•				•		•									•	
Curtiss Park	•		•		•		•		•	•			•						
Mill Pond Park	•					•	•		•	•			•					•	
Peoples Park		•	•						•				•					•	
Canterbury Park	•								•										
Marlpool Tot Lot	•	•																	
Colony Park	•								•				•						
Stonecliff Park																			•
Tefft Park	•	•	•	•					•				•	•				•	•
City of Ypsilanti																			
Candy Cane Park	•			•	•					•									
Carrie Mattingly Lot	•																		
Charles Street Tot Lot	•								•										
Edith Hefley Park	•								•										
Frog Island Park						•													•
Gilbert Park	•				•														
Parkridge Park/Community Center	•	•	•	•					•	•									•
Penninsular Park									•	•									•
Prospect Park	•	•	•	•	•				•	•									
Riverside Park	•								•	•									•
Waterworks Park				•					•	•									

I. Private and Nonprofit Recreation Service Providers

The Ann Arbor area has a wealth of private recreation, arts, and fitness providers. In some cases, they offer the community a more advanced level and more intensive or frequent opportunities to participate in recreational outlets, as well as offer facilities and programs that municipal agencies do not, such as bowling. In many cases the City and/or schools provide spaces for these groups. They also tend to be more expensive than the programs offered by Community Education and Recreation and Ann Arbor Parks and Recreation. The PROS Plan does not include an inventory of these private facilities.

J. Grant Inventory

Below is a list of grants that have been received by the Ann Arbor Parks and Recreation system from the Michigan Natural Resources Trust Fund, the Land and Water Conservation Fund, the Clean Michigan Initiative Recreation Bond Fund, and the 1988 Recreation Bond Fund.

SECTION IV: Inventory of the Park, Recreation and Open Space System

GRANT INVENTORY

Project	Project Number	Application Year	Grant Amount	Project Description
Geddes Pond Development	26-00499	1973	\$150,000.00	Development of Gallup Park, including pathways, docks, park furniture
Gallup Park Pathway	26-00870	1977	\$25,191.18	Development of pathway along Huron River
Leslie Park Development	26-01023 A4	1977	\$39,247.08	Tennis courts, sidewalk, landscaping, picnic equipment, parking lot delineations
Riverside Park Redevelopment	26-01080	1978	\$22,609.79	Shoreline stabilization and restoration, play area, pathway, park furniture
Hunt Park Redevelopment	26-01060 G2	1978	\$12,501.87	Play area, picnic area, pathway, drinking fountain, benches, relocate ball diamond, picnic equipment
Green/Baxter Park Development	26-01107	1980	\$15,086.00	Walkway, landscaping, game court, playground, picnic area
Johnson-Greene Parkland	TF624	1982	\$250,000.00	Acquisition of 32 acres for first phase of Bandemer Park
Gallup Park Improvements	26-01257	1983	\$58,312.00	Construction of canoe livery, interpretive displays, docks, play area, landscaping, park furniture
Island Park Improvements	26-01385	1985	\$134,556.47	Play equipment, river stabilization, walkway, shelter renovations, barrier free modifications to restroom, pedestrian bridge, park furniture
Bandemer Park Development	BF89-411	1989	\$380,000.00	Development of Bandemer Park, including pathways, picnic shelter, docks, parking area, park furniture
Veterans Park Ice Arena	BF90-371	1990	\$700,000.00	Replace ice arena slab, upgrade sound system, renovate pool and filtration system, barrier free access improvements, locker room and fitness area renovations
Hawkins Property	TF88-132	1990	\$281,250.00	Addition of 8 acres to Bandemer Park
Black Pond Woods Acquisition	TF90-373	1990	\$875,000.00	Acquisition of 32.21 acres of natural area adjacent to Leslie Science Center
Sias Parcels A and B	TF91-274	1991	\$321,000.00	Acquisition of 13.5 acres for Dhu Varren Woods Natural Area
Gunn Property Acquisition	TF91-275	1991	\$517,600.00	Acquisition of 13.11 acres for Huron Parkway Nature Area
West Park Bandshell Renovations	26-01500	1991	\$93,276.00	Renovation of historic bandshell, included rebuilding arch, resurfacing stucco
Ganzhorn Sub. Lots	TF92-115	1992	\$87,300.00	Acquisition of 29.97 acres for Kuebler Langford Park
Evergreen Sub. Lots	TF92-116	1992	\$37,400.00	Acquisition of 3.14 acres of land for Evergreen neighborhood park

SECTION IV: Inventory of the Park, Recreation and Open Space System

GRANT INVENTORY (con't)

Project	Project Number	Application Year	Grant Amount	Project Description
Furstenberg Park	TF92-117	1992	\$375,000.00	Development of Phase II of Furstenberg Park, including restroom building, boardwalk, interpretive signage, and landscaping
SE Area Park Improvements	26-01554	1994	\$266,476.00	Development of SE Area Park including game courts, playgrounds, ball fields, picnic shelter, pathways
Traverwood Woods Acquisition	TF94-226	1994	\$280,000.00	Acquisition of 8.1 acres of natural area
Renovate Neighborhood Parks	TF95-225	1995	\$70,000.00	Renovations to play areas and park amenities at Winewood Thaler, Bromley, Clinton and Wurster Parks
Main Street Property Acquisition	TF95-227	1995	\$726,000.00	Addition of 17.77 acres of natural area to Bluffs Park
Southeast Area Park Addition	TF96-130	1996	\$293,250.00	Addition of 25.69 acres to Southeast Area Park for active recreation
Leslie Environmental Center	TF96-132	1996	\$500,000.00	Construction of Nature House - a state of the art sustainable construction for programs and functions
Scarlett-Mitchell Addition	TF98-089	1998	\$675,500.00	Addition of 25.07 acres of natural areas to Scarlett Mitchell Nature Area
Northeast Area Park (Olson Park) Development	CM00-142	2000	\$380,000.00	Development of Olson Park, including pathways, picnic shelter, play area, parking, fishing dock, soccer fields
Bluffs Park Addition	TF00-350	2000	\$550,000.00	Withdrawn
Dolph Park Addition	TF02-113	2002	\$688,000.00	Addition of 18.2 acres to provide access from south and for neighborhood adjacent to park

SECTION IV: Inventory of the Park, Recreation and Open Space System

GRANT INVENTORY CONTINUED: OTHER SOURCES

Project	Application Year	Grant Amount	Project Description
Transportation Enhancement Program	1993	\$98,000.00	Construction of non-motorized path through Bandemer Park
Transportation Enhancement Program	1996	\$20,000.00	Water quality improvements under M-14 bridge at Bandemer Park
Community Foundation for Southeastern Michigan	2001	\$25,375.00	Engineering and construction documentation for Argo Dam crossing and pathway
Community Foundation for Southeastern Michigan	2003	\$31,000.00	Development of trail over Argo Dam and bicycle path to Lakeshore Drive
Detroit Edison Foundation	2003	\$4,500.00	Huron River Day Festival
Detroit Edison Foundation	2004	\$4,500.00	Huron River Day Festival
State of Michigan	2005	\$2,252.00	Volunteer river, stream and creek cleanup
Ann Arbor Community Foundation	2005	\$1,500.00	Provided Ann Arbor area nonprofit youth groups canoe instructional program
Detroit Edison Foundation	2005	\$4,500.00	Huron River Day Festival
Detroit Edison Foundation	2006	\$4,500.00	Huron River Day Festival
Michigan Section of Public Waterworks	2006	\$1,000.00	Design and implementation of river education curriculum form Ann Arbor Public Schools middle school students
Detroit Edison Foundation	2007	\$4,500.00	Huron River Day Festival
State of Michigan	2007	\$3,896.00	Volunteer river, Stream and creek cleanup
Downtown Development Authority	2007	\$30,000.00	Historic Kempf House foundation replaced
City of Ann Arbor Customer Service Grant	2010	\$1,000.00	New ice skates for Buhr Park
Helen Mcula Trust	2010	\$18,000.00	Equipment for Senior Center
Ann Arbor Community Foundation	2010	\$16,979.00	Funds for a consultant to develop a long term strategic plan for the Senior Center