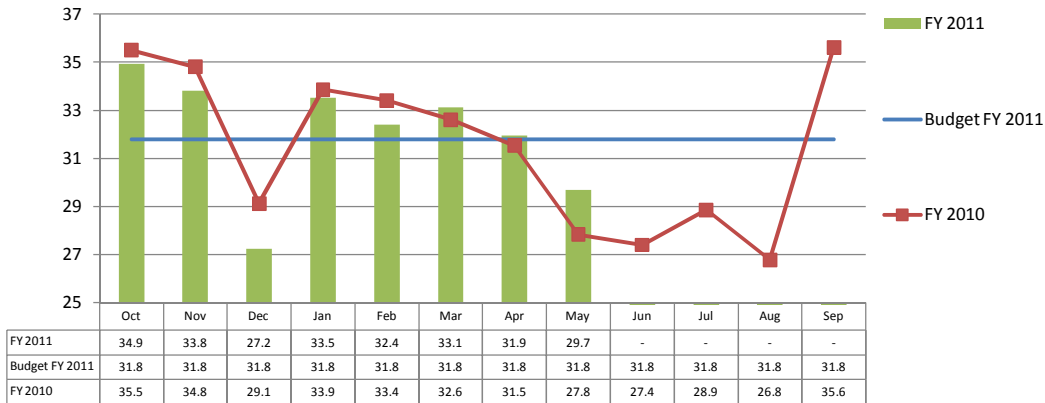
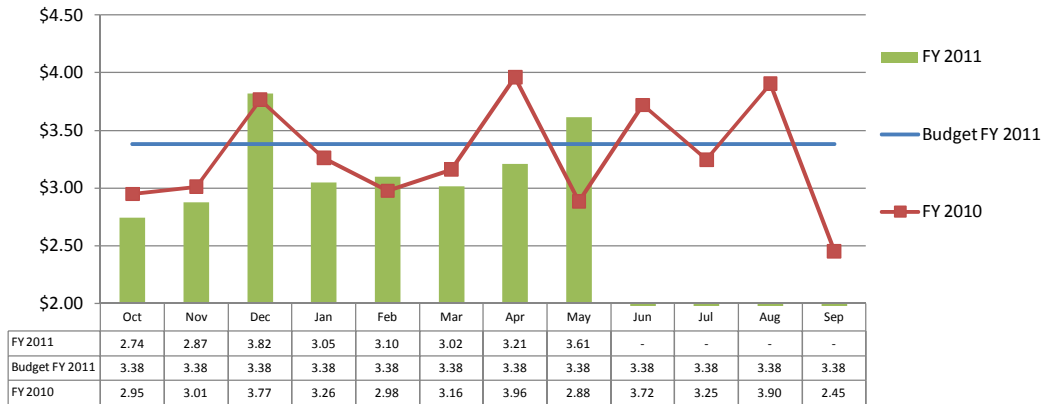


Urban Fixed Route Service

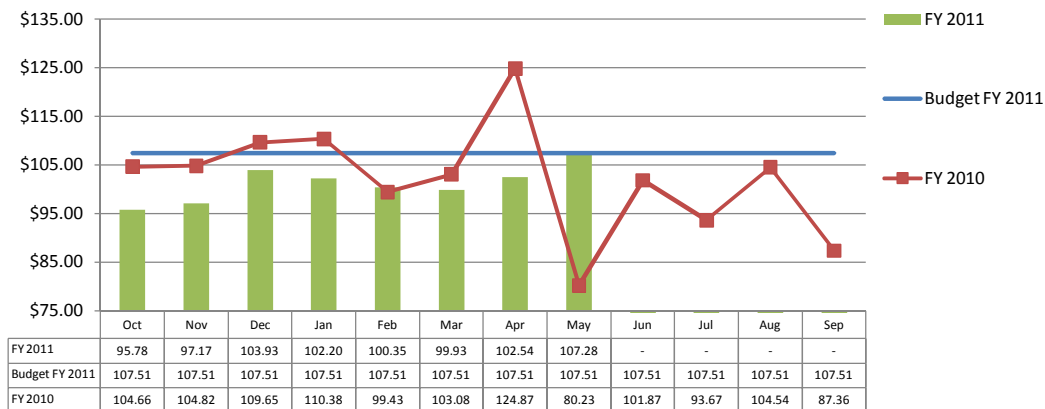
Passengers per Service Hour October 1, 2010 - May 31, 2011



Operating Expense per Passenger October 1, 2010 - May 31, 2011

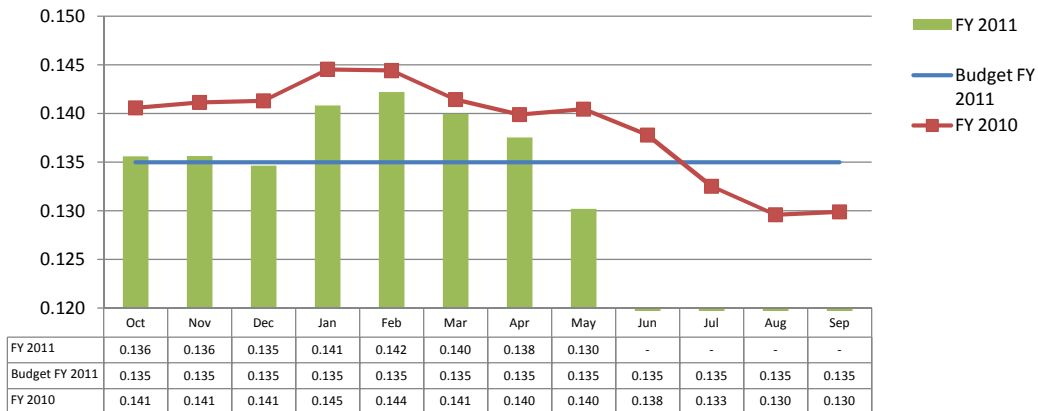


Operating Expense per Service Hour October 1, 2010 - May 31, 2011

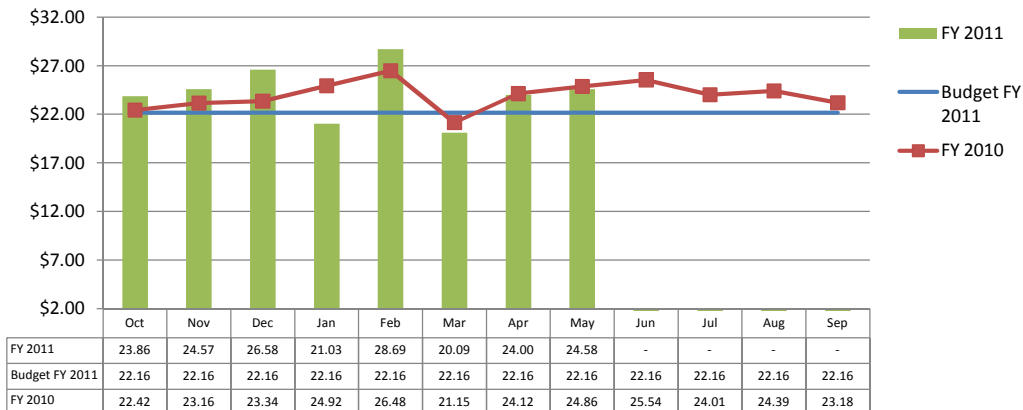


Urban Demand Response Subcontracted Service

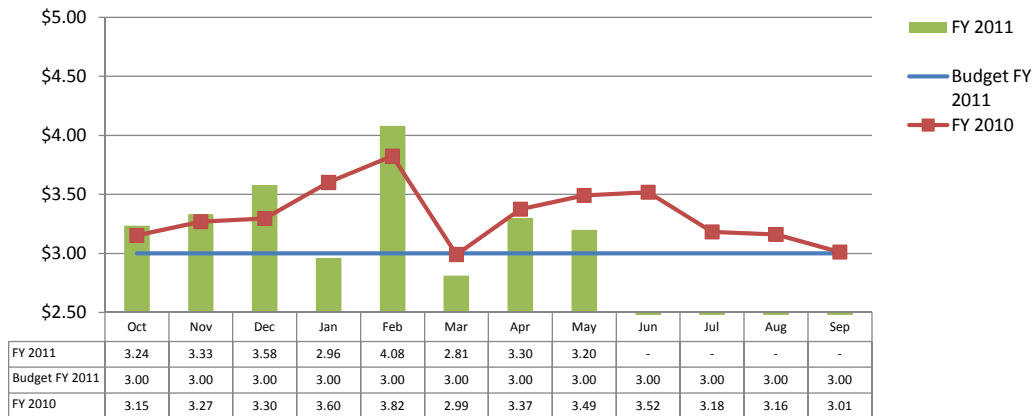
Passengers per Mile
October 1, 2010 - May 31, 2011



Operating Expense per Passenger
October 1, 2010 - May 31, 2011



Operating Expense per Mile
October 1, 2010 - May 31, 2011



Monthly Performance Report

May 2011

