

18 July 2011

MEMORANDUM

From: KENNETH CLEIN
QUINN EVANS ARCHITECTS (QEA)

To: ANN ARBOR PUBLIC ARTS COMMISSON (AAPAC)
C/O VENITA HARRISON

RE: ANN ARBOR MUNICIPAL CENTER EXTERIOR ARTWORK

Subject: *Project Status Update*



219½ N. MAIN STREET
ANN ARBOR, MI 48104
734 663 5888

CURRENT ACTIVITY SYNOPSIS

Progress by the Design and Fabrication Team since last month includes:

- The six large bronze plates were cast at Wolverine Bronze in Warren, MI. Future Fence (FF) has taken possession of these castings and is machining them to accept the glass pearls and mounting to the structural frame.
- Waiting for a proposal in response to the Proposal Request (PR) for modifications to plaza lighting and electrical.
- Issued a Proposal Request (PR) for concrete footing for benches and wall dividing main water chamber from overflow. And removing of fill dirt placed in channel during construction.
- Concrete dividing walls, sculpture foundations have been completed.
- Fill dirt has been removed from reservoir.
- Future Fence (FF) prepared templates for the sloped and flat water ramp sections and fitted these on-site.
- Future Fence (FF) is fabricating the stainless steel support structure.
- The glass pearl lighting and water flow was mocked-up by CAE (See photos).

TIMELINE UPDATE

The anticipated installation of the sculpture is mid to late August 2011. This is dependent on completion of the South Plaza work by the construction manager. If completion of this work is delayed, installation of the sculpture could be impacted.

BACKGROUND INFORMATION

Please review the following photos showing progress made this past month:

WASHINGTON, DC
ANN ARBOR, MI
MADISON, WI

WWW.QUINNEVANS.COM



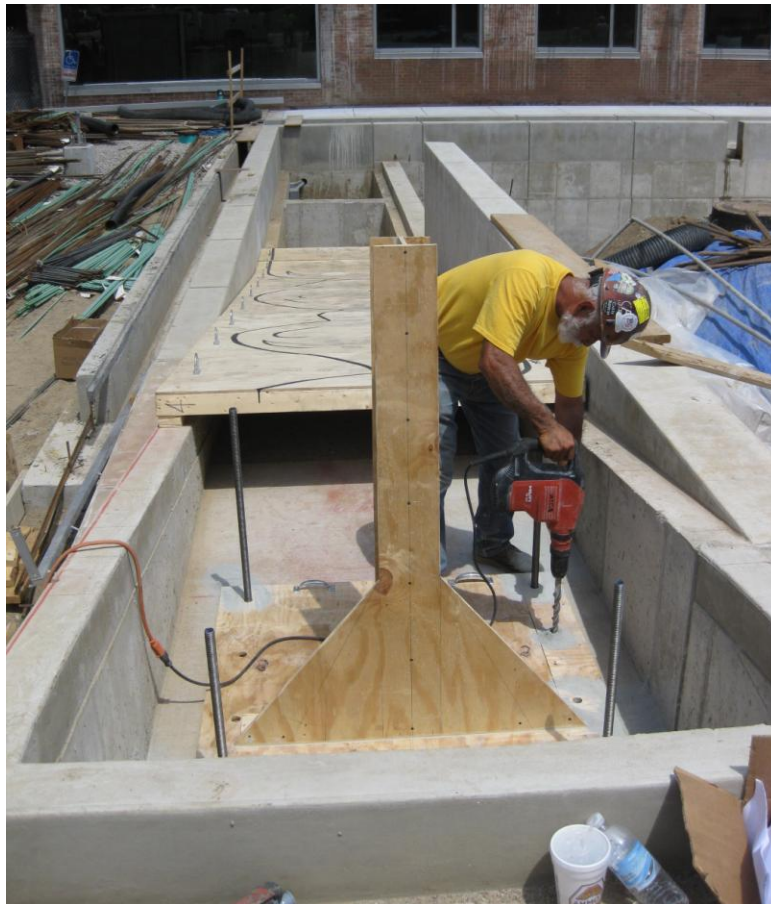
Prototype glass pearl assembly



Mock-up of glass pearl in sample bronze plate with water flow



Plywood templates being "fitted" on site. The black lines show the flow-way that will be formed in the precast concrete ramp.



Drilling for stainless steel anchor bolts to locate the structure mock-up on the foundation.



Marking elevations of ramp templates on structure mock-up



Templates in place, showing position of ramp and structure.

CC: Artistic Team, M. Kulhanek, File

END OF MEMORANDUM