

JUSTICE BUILDING LOBBY OPTIONS

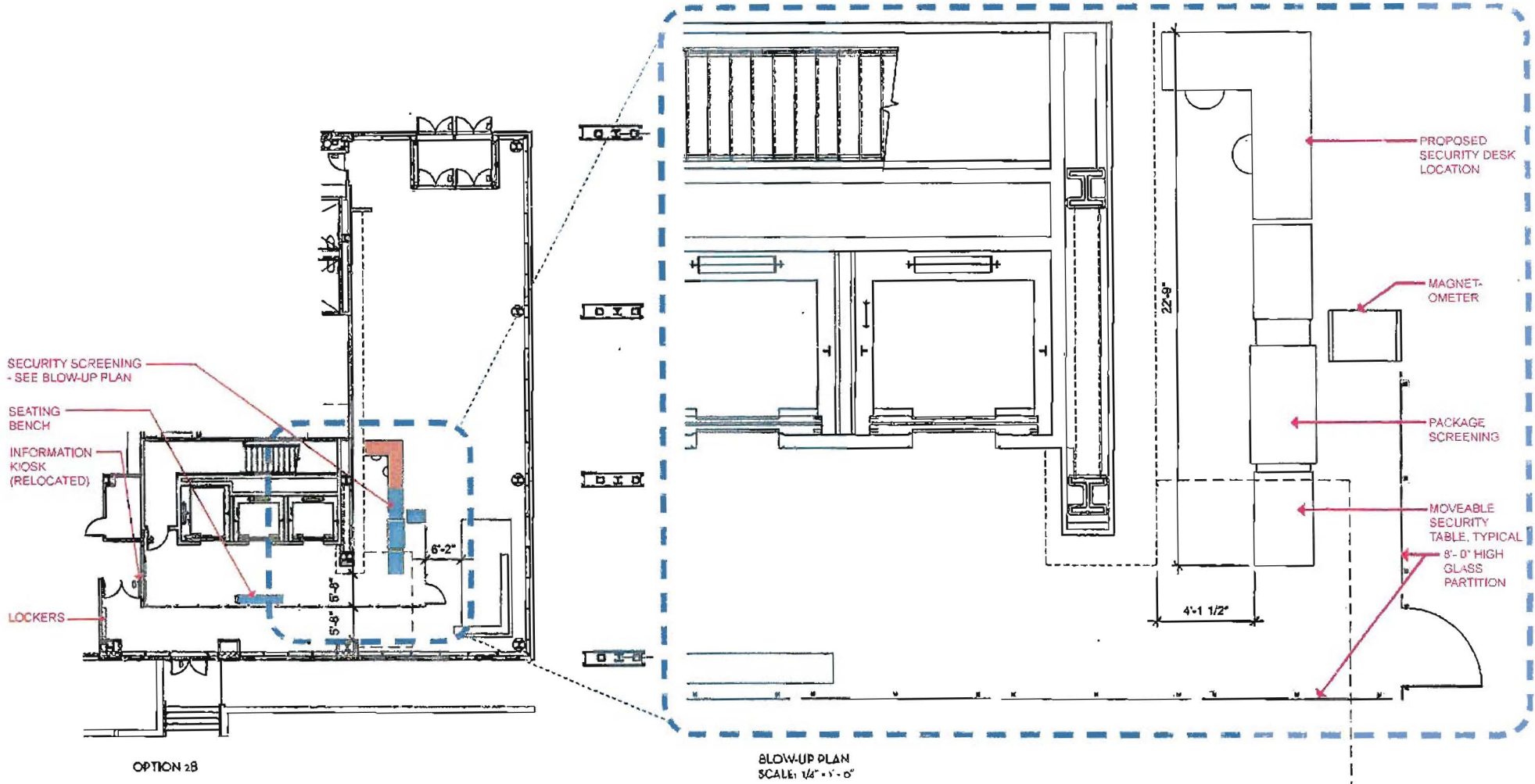
OPTION	DESCRIPTION / WORK	QTY	UNITS	COST/UNIT	EXTENSION	REMARKS
2a	Relocate Security Screening to Elevator Lobby					
<u>Construction</u>						
	Remove Glass Partitions / Fill Holes	2		\$1,000	\$2,000	
	sawcut concrete slab / terrazzo & patch	10	LF	\$350	\$3,500	
	power and Data to new location	1		\$12,500	\$12,500	
	Cutting and Patching	1	ALLOW	\$7,500	\$7,500	
	glass partitions	2	EACH	\$1,000	\$2,000	reinstall existing
	lighting revisions	1	ALLOW	\$5,000	\$5,000	exit signs, security desk
	Relocate Information Kiosk	1	ALLOW	\$7,500	\$7,500	Optional
<u>FF&E</u>						
	signage	1	ALLOW	\$3,000	\$3,000	
	Security/Greeter Desk	1	ALLOW	\$20,000	\$20,000	
	Benches	2	EACH	\$5,000	\$10,000	in lieu of stacking chairs
Sub-TOTAL					\$73,000	
<u>Other</u>						
	A/E Fees				\$7,300	
	Contractor OH&P				\$10,950	
TOTAL					\$91,250	
2b	Relocate Security Screening to West					
<u>Construction</u>						
	Remove Glass Partitions / Fill Holes	2	EACH	\$1,000	\$2,000	
	sawcut concrete slab / terrazzo & Patch	70	LF	\$350	\$24,500	
	power and Data to new location	1	ALLOW	\$12,500	\$12,500	
	Cutting and Patching	1	ALLOW	\$5,000	\$5,000	
	glass partitions	15	EACH	\$6,500	\$97,500	new 8' high
	lighting revisions	1	ALLOW	\$2,500	\$2,500	exit signs, security desk
	Relocate Information Kiosk	1	ALLOW	\$7,500	\$7,500	Optional
<u>FF&E</u>						
	signage	1	ALLOW	\$3,000	\$3,000	
	Security/Greeter Desk	1	ALLOW	\$15,500	\$15,500	
	Benches	2	EACH	\$5,000	\$10,000	in lieu of stacking chairs
Sub-TOTAL					\$180,000	
<u>Other</u>						
	A/E Fees				\$18,000	
	Contractor OH&P				\$27,000	
TOTAL					\$225,000	

JUSTICE BUILDING LOBBY OPTIONS

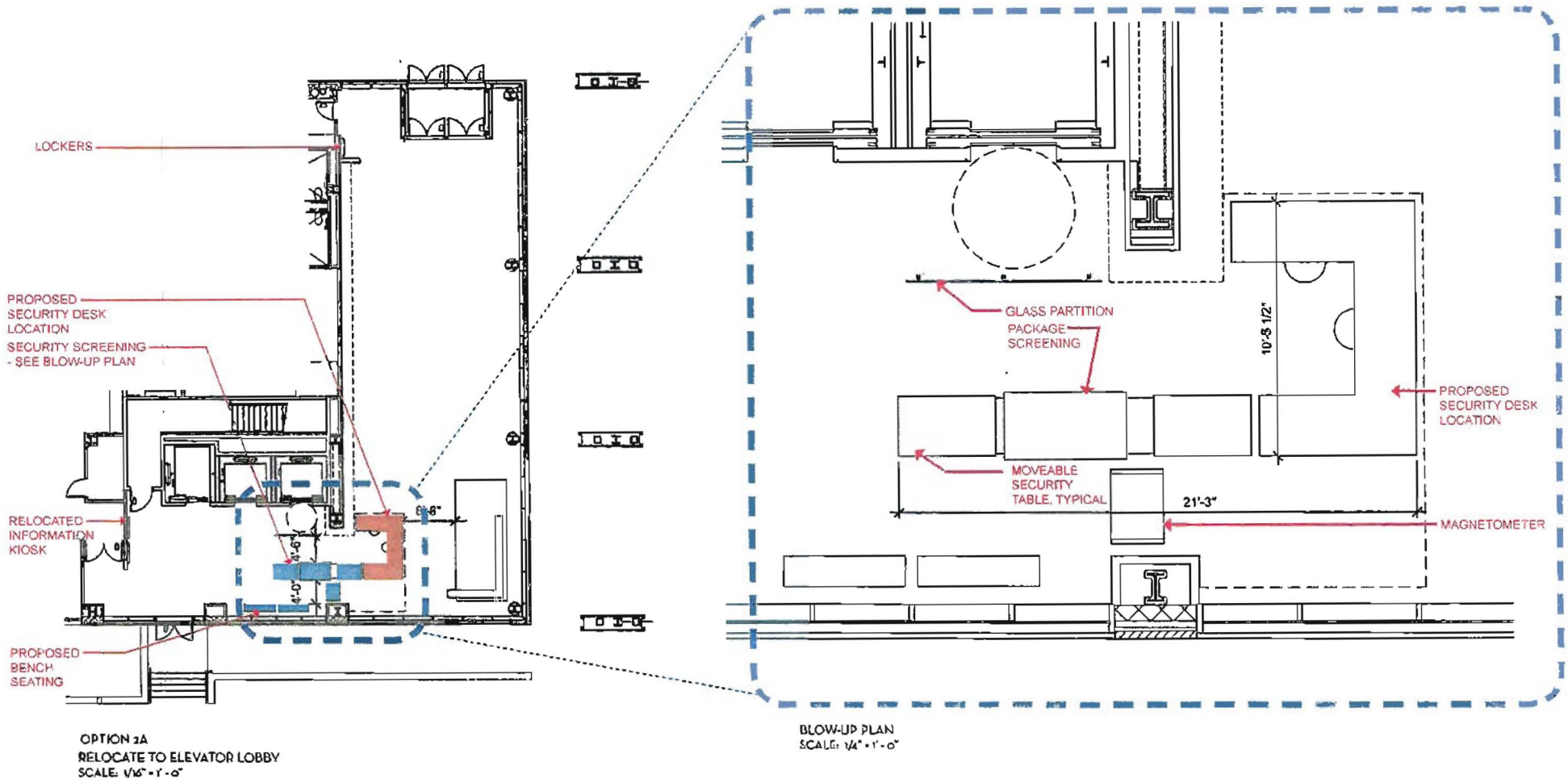
OPTION	DESCRIPTION / WORK	QTY	UNITS	COST/UNIT	EXTENSION	REMARKS
1a	Existing / Temporary Relocation of Security Screening					
<u>Construction</u>	Remove Glass Partitions / Fill Holes	2	EACH	\$1,000	\$2,000	
<u>FF&E</u>	Security/Greeter Desk	1	ALLOW	\$12,500	\$12,500	
	Benches	2	EACH	\$5,000	\$10,000	<i>in lieu of stacking chairs</i>
	Sub-TOTAL				\$24,500	
<u>Other</u>	A/E Fees				\$2,450	
	Contractor OH&P				\$3,675	
	TOTAL				\$30,625	
1b	Existing / Eliminate one (1) Magnetometer					
<u>Construction</u>	Remove Glass Partitions / Fill Holes	2	EACH	\$1,000	\$2,000	
<u>FF&E</u>	Security/Greeter Desk	1	ALLOW	\$20,000	\$20,000	
	Benches	2	EACH	\$5,000	\$10,000	<i>in lieu of stacking chairs</i>
	Sub-TOTAL				\$32,000	
<u>Other</u>	A/E Fees				\$3,200	
	Contractor OH&P				\$4,800	
	TOTAL				\$40,000	

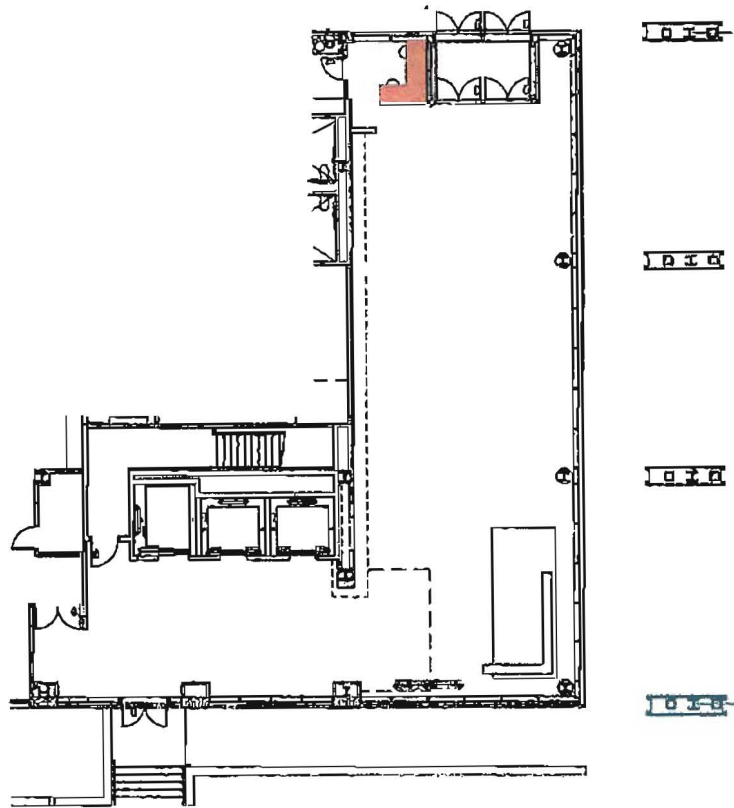
JUSTICE BUILDING LOBBY OPTIONS

OPTION	DESCRIPTION	COST	PRO	CON	REMARKS
1a	Existing / Temporary Relocation of Security Screening	\$30,625	least expensive most secure minimal disruption	set-up/take-down time = 1-2 hours lobby is less "open" to public during the day visual control of 5th street doors	\$2,500 <i>utilize preferred security desk position</i>
1b	Existing / Eliminate one (1) Magnetometer	\$40,000	less expensive most secure minimal disruption	set-up/take-down time = 1-2 hours lobby is less "open" during the day visual control of 5th street doors	\$2,500 <i>Alternate security desk position</i>
2a	Relocate Security Screening to Elevator Lobby	\$91,250	Completely "opens" lobby to public best line-of-sight to 5th street doors	compromises security the most <i>very limited space at elevator lobby</i> Inconvenient ingress/egress pattern Expensive Disruptive to operations security personnel in vulnerable position Reduces elevator lobby space	\$52,500 <i>utilize preferred security desk position</i> <i>enter from plaza, exit on 5th</i> <i>during construction</i> <i>backs to glass or elevators</i>
2b	Relocate Security Screening to West	\$225,000	Lobby appears more "open" to the public better line-of-sight to 5th street doors	compromises security Most Expensive Disruptive to operations set-up/take-down time = 1-2 hours requires relocation of Information Kiosk	\$151,250 <i>Alternate security desk position</i> <i>during construction</i> <i>added expense</i>

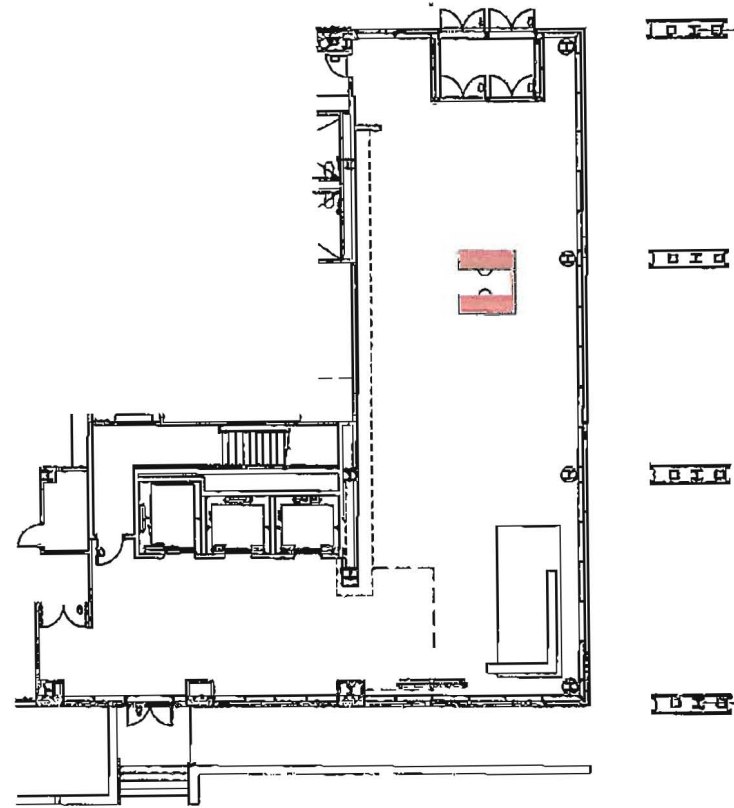


RELOCATE TO ELEVATOR LOBBY
SCALE: 1/16" = 1'-0"



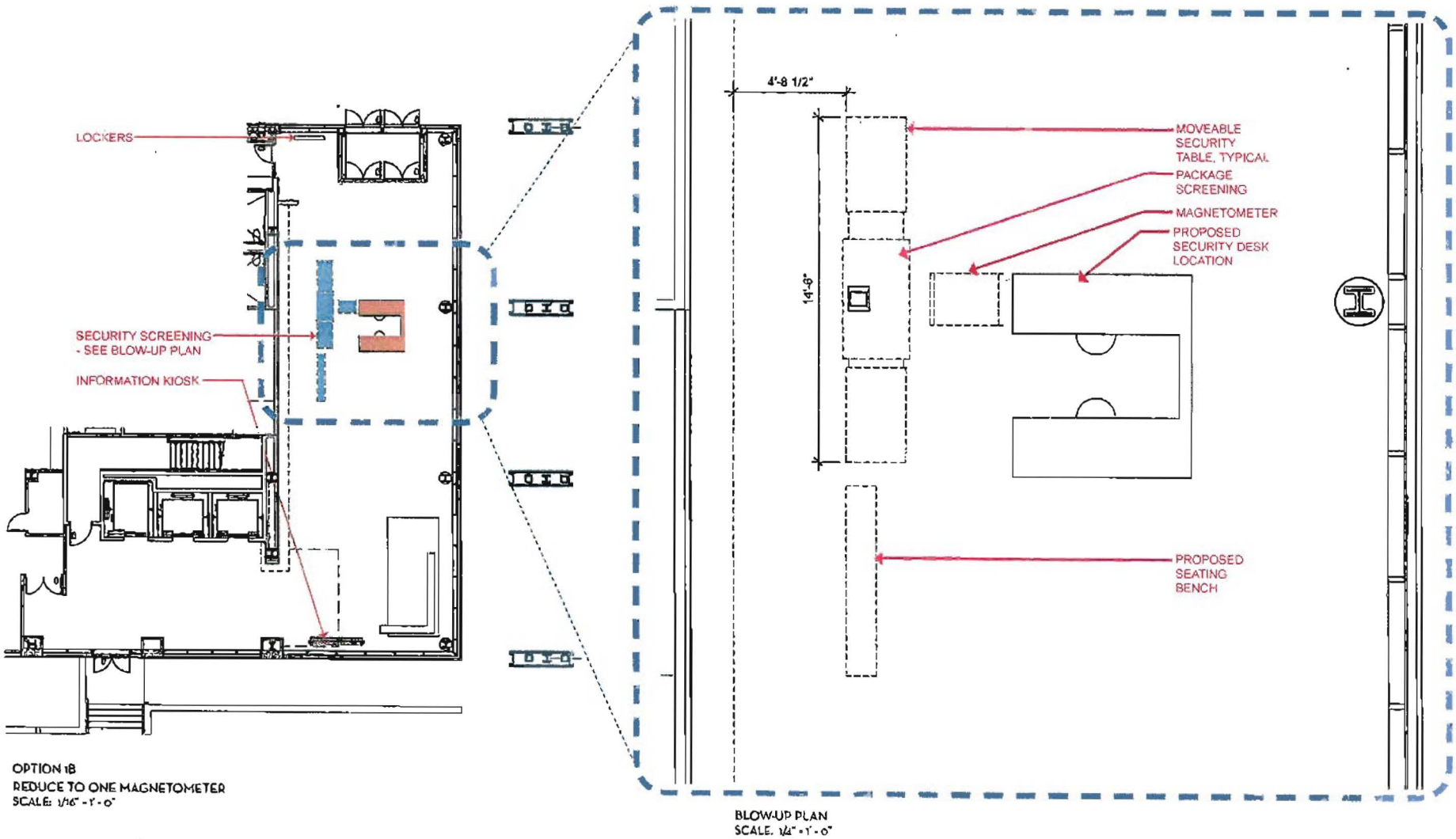


OPTION 1A with Security Screening
Equipment Removed
SCALE: 1/16" = 1' - 0"



OPTION 1B with Security Screening Equipment
Removed

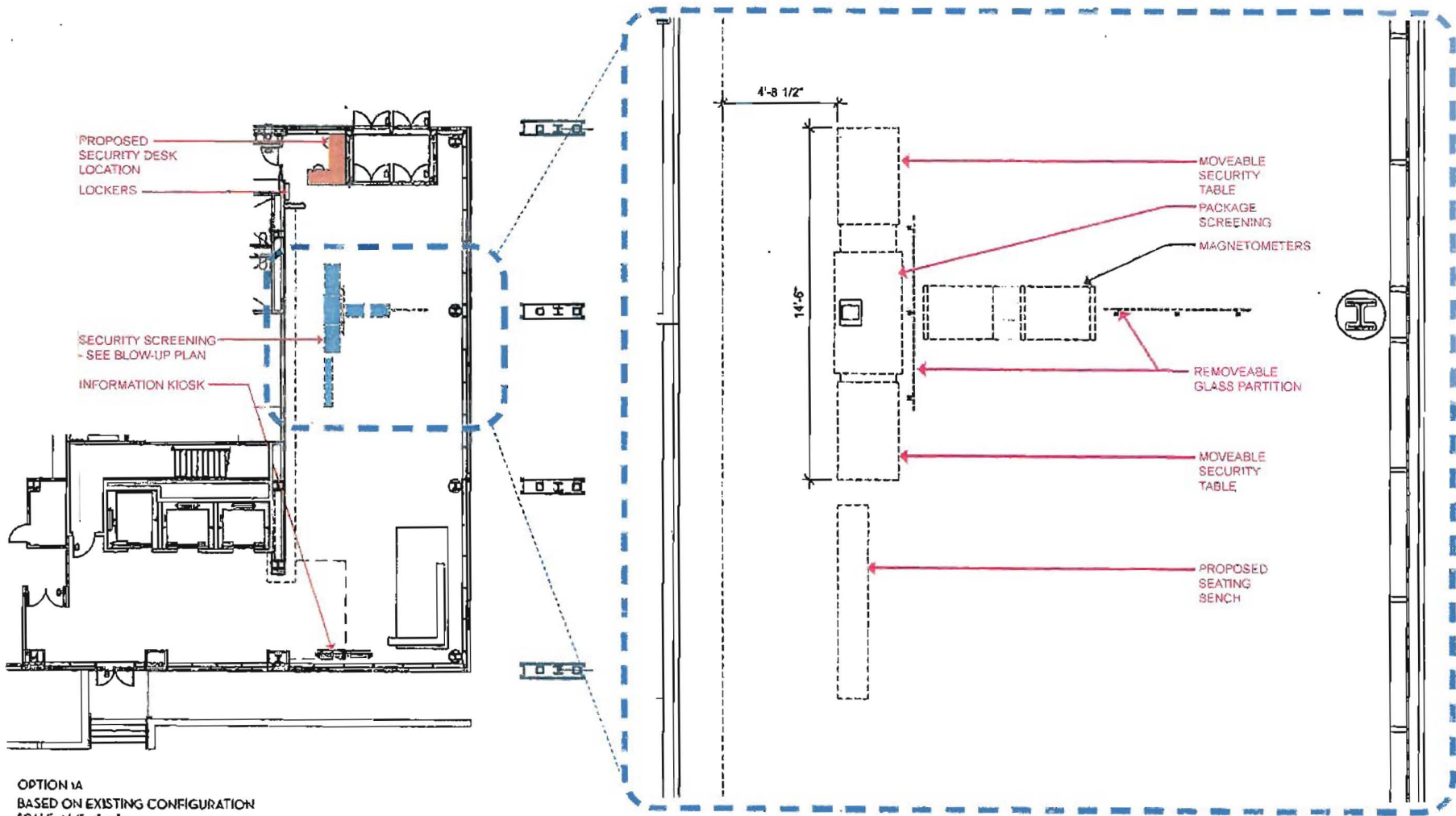




OPTION 1B
 REDUCE TO ONE MAGNETOMETER
 SCALE: 1/16" = 1'-0"

BLOW-UP PLAN
 SCALE: 1/4" = 1'-0"





OPTION 1A
 BASED ON EXISTING CONFIGURATION
 SCALE: 1/16" = 1'-0"

BLOW-UP PLAN
 SCALE: 1/4" = 1'-0"



