



Washtenaw County Parks and Recreation Commission

Memorandum

To: Washtenaw County Parks and Recreation Commission
From: Robert L. Tetens, Director
Date: July 20, 2012
Re: Recommendation: County Farm Park – Washtenaw Avenue Archway
Landscape & Pathway Paving

Background:

The Malletts Creek detention area and stream restoration project has created an opportunity to give County Farm Park a strong presence along one of the busiest streets in Ann Arbor. Creating a pedestrian entrance along Washtenaw has already begun, which includes the recently installed gravel pathway, kiosk, and entry arch.

Despite regular maintenance, the existing natural surface and gravel sections of the pathway are often uneven, can be muddy, and are un-usable by wheeled vehicles that require smooth surfaces such as road bicycles, rollerblades, and wheelchairs. Paving this segment of trail will allow for a seamless connection to the existing non-motorized pathway on the south side of Washtenaw, improve non-motorized connectivity for more modes of transportation and recreation, enhance handicap accessibility, and draw more patrons into the park.

Discussion:

The planning staff has prepared a preliminary cost opinion, route overview map, and concept drawing (see attachments). Included in the cost opinion is the stone base for the pathway (approved in the CIP) which has already been installed to delineate a route for pedestrians through the Malletts Creek restoration project. Additionally, modest landscape design work has been included in the cost opinion to ensure that the park's presence along Washtenaw is well-defined and appealing to pedestrians and vehicles alike.

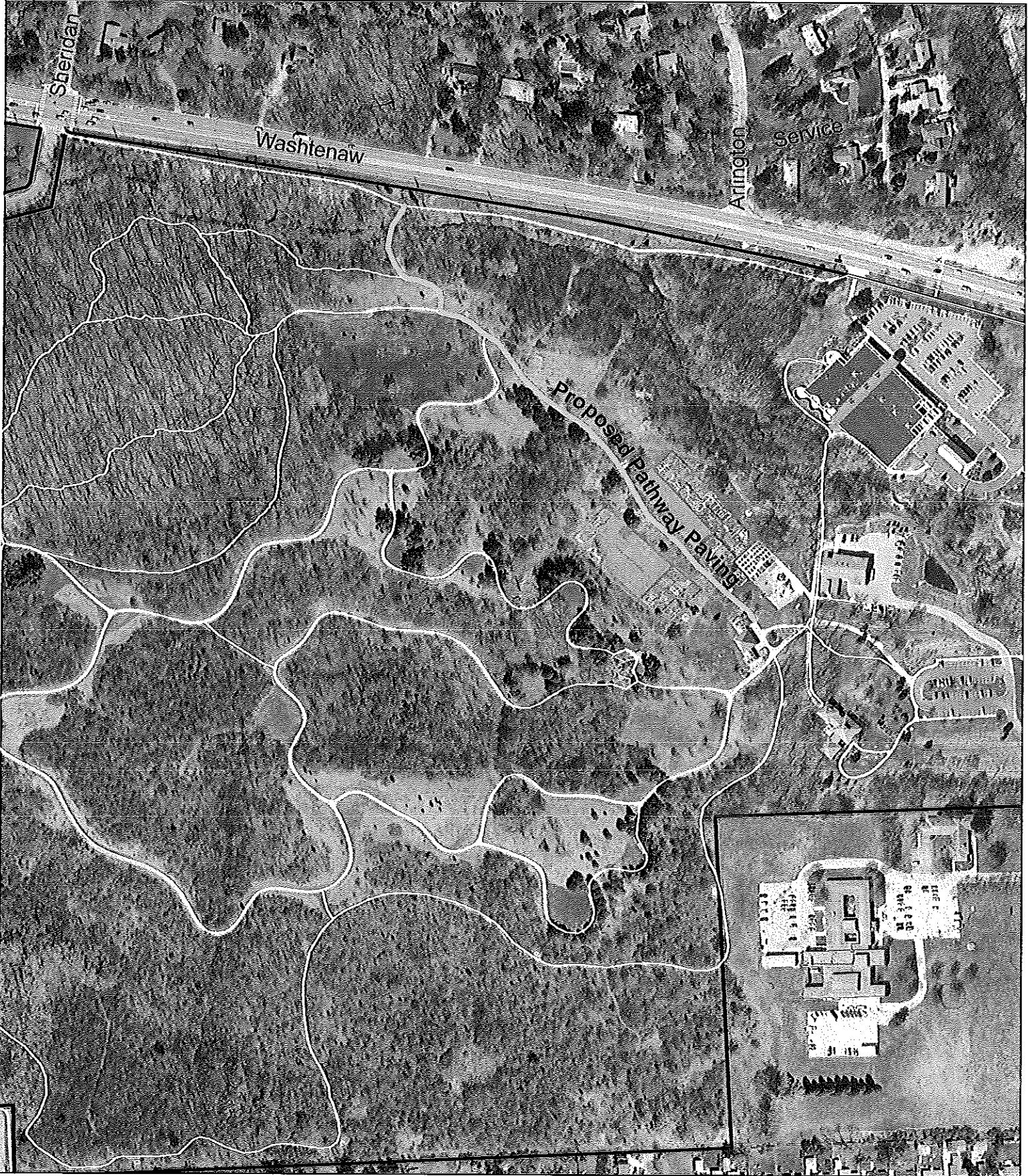
The location of this project within County Farm Park also makes it adjacent to the administrative offices. The planning staff also recommends that the construction drawings, specifications, and project oversight be completed "in-house" in order to greatly reduce the cost of this project by eliminating consultant fees.

Recommendation:

The planning staff has estimated that landscaping the new Washtenaw Avenue entrance and paving the pathway between the existing Washtenaw Avenue bicycle path and Platt Pavilion will be approximately \$50,000-\$60,000. Based upon the review of the planning staff and completion of necessary background investigation, it is my recommendation that the Washtenaw County Parks and Recreation Commission authorize the in-house preparation of construction drawings and reception of bids for the landscaping and paving of the pathway at County Farm Park.




Attachments (4)

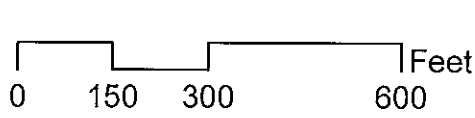
County Farm Park - Paved Pathway



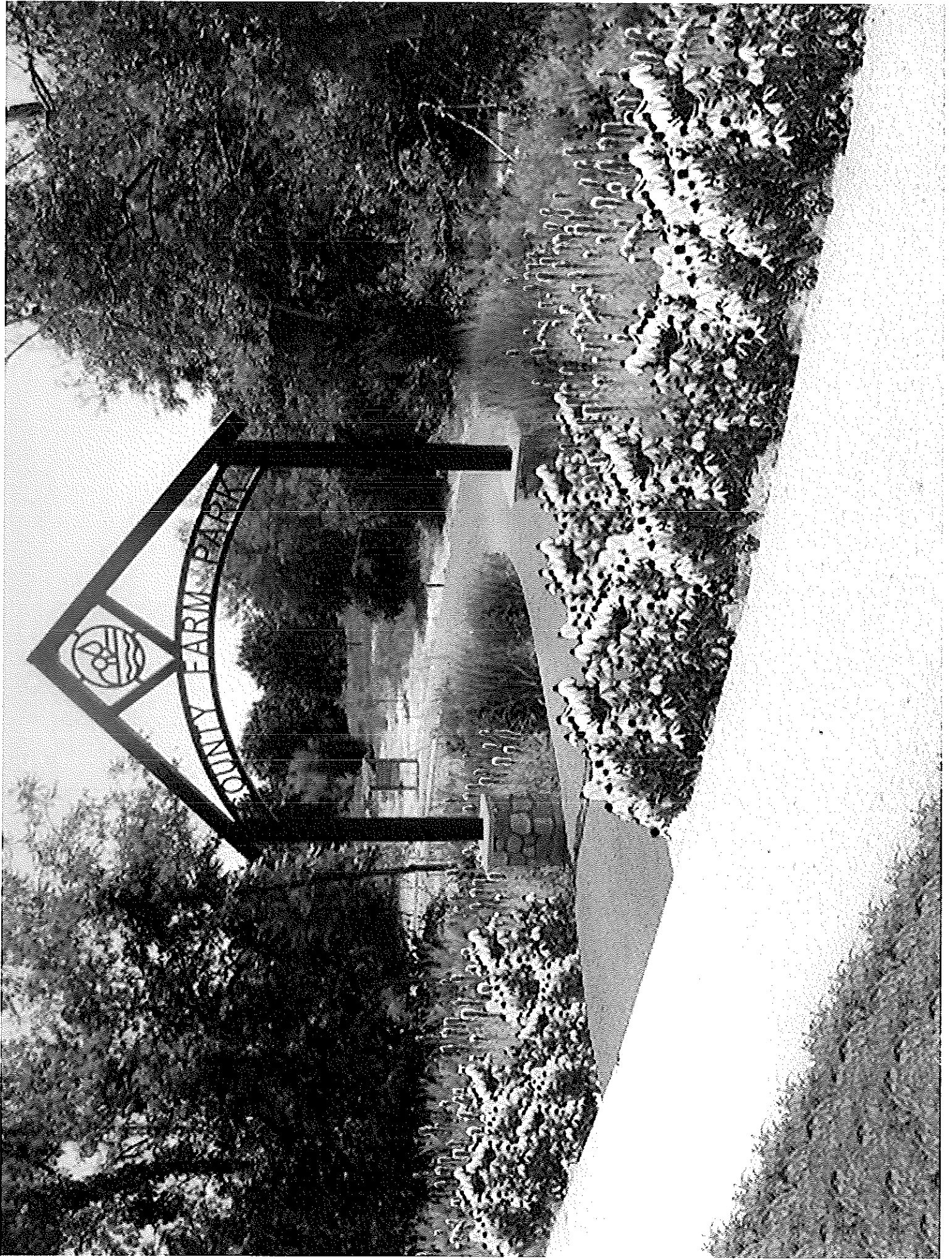
Data Source:
Washtenaw County GIS

Date: 7/16/2012

-  Park Boundary
-  Existing Trails
-  Proposed Paving









Washtenaw County Parks and Recreation Commission

County Farm Park - Pathway Paving, Washtenaw Path to Pavilion

"PRELIMINARY" COST OPINION
Wednesday, July 11, 2012

1400+/- LF Pathway, 8FT Wide

ITEM or WORK DESCRIPTION		ESTIMATED QUANTITY	UNIT	UNIT PRICE	AMOUNT
A. LANDSCAPING & RESTORATION					
1	Canopy Trees (2 1/2" Cal.)	8	EA	\$480.00	\$3,840.00
2	Landscape plantings, boulders, & bedding prep.	1	LS	\$4,500.00	\$4,500.00
3	Landscape seeding and restoration	1	LS	\$2,500.00	\$2,500.00
4	Topsoil	50	CY	\$50.00	\$2,500.00
Subtotal Section - A Items 1-4					\$13,340.00
B. PATHWAY					
1	Excavate and remove soil/subgrade preparation, rough grading	280	CY	\$12.00	\$3,360.00
2	Limestone base material (6" thick - CIP)	290	Ton	\$26.00	\$7,540.00
3	Asphalt Pathway (4" thick)	275	Ton	\$75.00	\$20,625.00
4	Installation of removable bollard	1	EA	\$800.00	\$800.00
Subtotal Section - B Items 1-4					\$32,325.00
PROJECT TOTAL - SECTIONS A, & B					\$45,665.00
Construction contingency (10%+/-)					\$4,566.50

ESTIMATED PROJECT CONSTRUCTION COST \$50,231.50

Washtenaw County Parks and Recreation Commission
2230 Platt Road / P.O. Box 8645
Ann Arbor, Michigan 48107-8645

Tel: (734) 971-6337
Fax: (734) 971-6386
parks.ewashtenaw.org