



***Washtenaw County Parks and Recreation Commission***

---

**MEMORANDUM**

**To:** Washtenaw County Parks and Recreation Commission  
**From:** Robert L. Tetens, Director  
**Date:** July 24, 2012  
**Re:** B2B, River Terrace Trail (segment D1) – Construction Contract

**Background**

In 2003 the Commission authorized a contract with Pollack Design Associates to conduct a feasibility study to determine the conceptual location of the Border-to-Border Trail along a 4.3 mile section of the Huron River between the Village of Dexter and Delhi Metropark (Segment D). More specifically, the study identified the first priority as the 1.42 mile trail from the Village to Dexter-Huron Metropark (Segment D1), also known as the River Terrace Trail. The planning process was coordinated closely with the Huron-Clinton Metropolitan Authority, Scio Township and the Village of Dexter.

The River Terrace Trail proposal includes a 170-foot bridge spanning the Huron River near the entrance to Dexter-Huron Metropark. In November 2005, the Michigan Department of Natural Resources (MDNR) denied a Natural Rivers Act permit application to construct the bridge – making the construction of D1 unfeasible. In January 2006, WCPARC filed an appeal of the permit denial. In July 2010 the appeal was finally granted by court order and all necessary permits were issued for construction of the bridge and trail project. The MDNR permit will expire on July 29, 2012.

**Discussion**

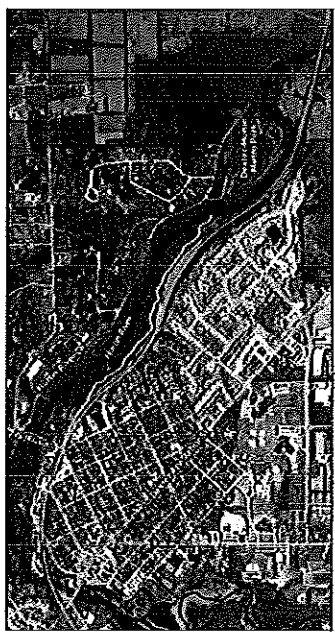
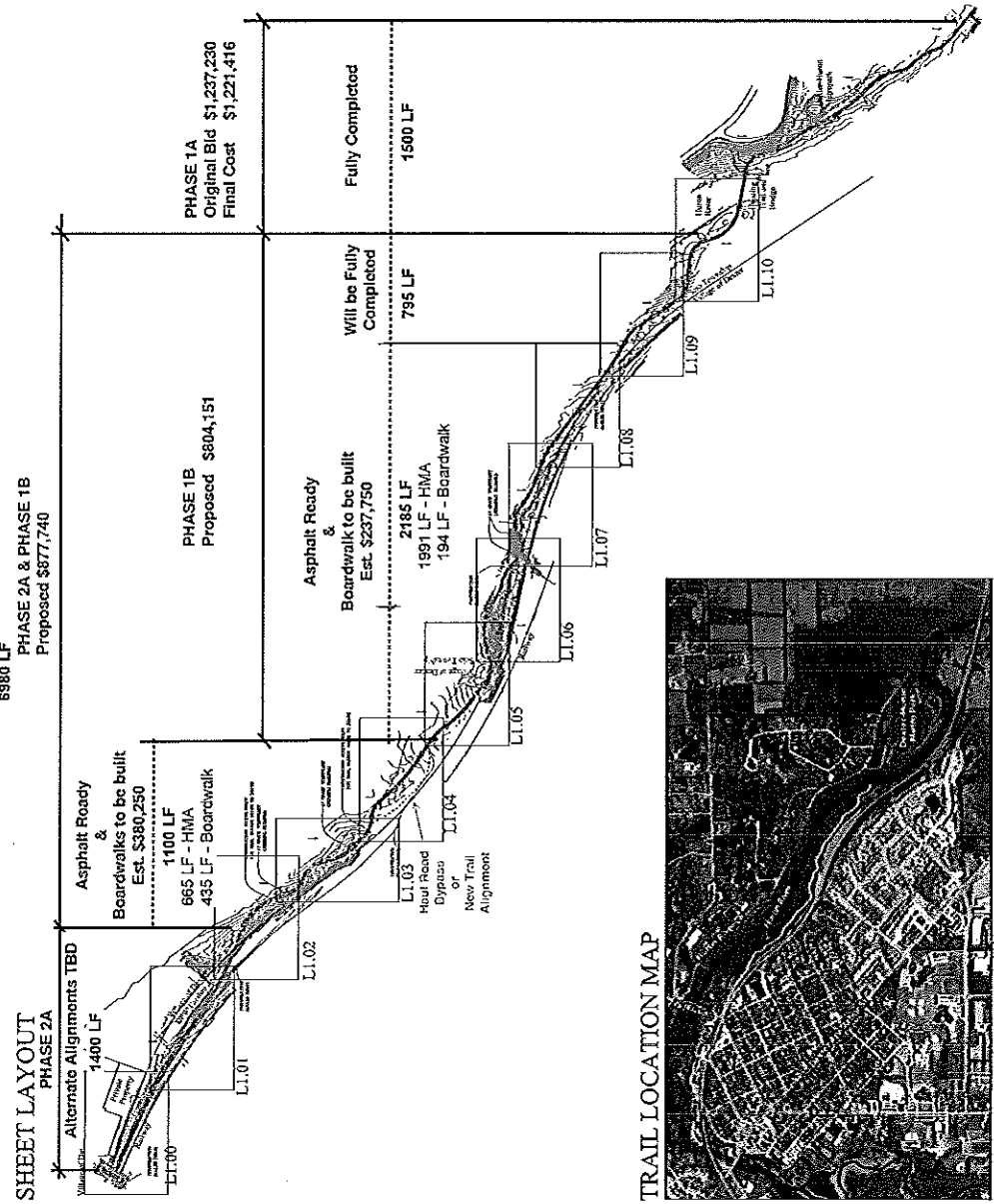
Phase 1 of the River Terrace Trail project was formally bid on September 21, 2011 (RFP #6638) and ten local firms attended the mandatory pre-bid meeting on October 13<sup>th</sup>. The bid opening was held on October 28, 2011 with four firms submitting competitive bids. Anlaan Corporation was the low bid at \$1,994,230.00. In order to ensure that installation of the bridge was completed prior to expiration of the permit, staff worked with the selected bidder to reduce the project scope by shifting a portion of the trail construction to a future phase. In December 2011, the Commission authorized a contract with Anlaan for construction of Phase 1 of the project for a total fee of \$1,237,230. The first phase was recently completed and included all the improvements on the north side of the Huron River, the bridge, and

approximately 80 linear feet of boardwalk on the south side of the river. The project was completed ahead of schedule and at a cost that was \$15,000 under the contract amount.

Staff is proposing to amend the contract with Anlaan to construct the remainder of Phase 1. This next phase (Phase 1B) will include construction of approximately 650 LF of boardwalk and 235 LF of paved asphalt trail, as well as 1,500 LF of trail base (construction access road) that will be ready for paving in Phase 2 of the project. Anlaan has proposed to complete this work for a cost of \$753,811, which would bring the total cost of Phase 1 approximately \$19,000 under their original bid. Since the Village of Dexter has sewer and water lines buried under the project access drive, the Village is requiring that the contractor take additional measures to protect these shallow utilities from damage. The Village is requiring that geotextile fabric and an additional 6 inches of aggregate base be placed along the entire length of the haul road. This will result in an additional cost of \$36,890, bringing the total cost to \$793,701. As an alternative, Anlaan has proposed that the majority of the haul road be shifted to the location that is the proposed trail alignment. Although this will result in some additional grading and tree removal in the current phase, it will leave a trail base that is ready to be paved during Phase 2 of construction. This alternative will result in an additional \$123,929 cost, bringing the total Phase 1B cost to \$877,740, but will allow the construction of an additional 3,195 LF of trail (aggregate base/haul road).

### **Recommendation**

It is my recommendation that WCPARC amend the contract with Anlaan Corporation, the low bidder, for the construction of Phase 1B for a total of \$877,740. Construction is anticipated to commence immediately upon approval of a contract.



### ABBREVIATIONS & SYMBOLS

AC	AGE	LIB.	FOUNDS
A.S.T.M.	AMERICAN SOCIETY OF MATERIALS	MANUFACTURER'S	MANUFACTURES
BIT	BITUMEN	MFR.	MANUFACTURE
BC	BOTTOM OF CURB	M.H.	MANHOLE
BS	BOTTOM OF STEP	N.O.	NUMBER
BW	BOTTOM OF WALL	N.T.S.	NOT TO SCALE
CA	COMPACTED AGGREGATE	O.C.	ON CENTER
CB	CATCH BASIN	O.D.	OUTSIDE DIAMETER
CLR	CLEARANCE	ORD.	ORDINANCE
CONC.	CONCRETE	PORT.	PORTLAND CEMENT
CONV.	CONCRETE MASONRY UNIT	PCC	PORTLAND CEMENT CONCRETE
C.S.	CENTERLINE	PT.	POINT OF INTERSECTION
D.S.	DRINKING FOUNTAIN	PSI	POUNDS PER SQUARE INCH
DI	DIAMETER	PT	POINT OF TANGENCY
DIA.	DRAWING	R	RADIUS
DWG.	EXPANSION JOINT	REINF.	REINFORCED
EP	EDGE OF PAVEMENT	REQD.	REQUIRED
EV	ELEVATION	SM.	SMALL
ELEV.	ELEVATION	SMALL	SMALL
EXT.	EXTERIOR	SPEC(S)	SPECIFICATIONS(S)
EXH.	EXTERIOR	STD.	STANDARD
FH	FIRE HYDRANT	STL.	STEEL
FP	FOCAL POINT	SS	STAINLESS STEEL
FT	FEET	T.S.	TOP OF CURB
GAL.	GALLON	T.W.	TOP OF WALL
GAL.	GALLON	TYP.	TYPICAL
GEN.	GENERAL	VCP	VITRIFIED CLAY PIPE
GEN.	GENERAL PER MINUTE	W	WITH
GP	GAS PIPE	WSP	WOODEN SERVICE POLE
GV	GAS VALVE	WV	WATER VALVE
HMA	HOT MIX ASPHALT	WM	WATER METER
HT	HEIGHT	WMM	WELDED WIRE MESH
HP	HIGH POINT		
HYD	HYDRANT		
IDEN.	IDENTIFICATION		
INFO.	INFORMATION		
INL.	INLET		
INV	PIPE INVERT		

### LEGEND

SPOT ELEV.	SPOT ELEV.	ROAD	ROAD
UTILITY POLE	UTILITY POLE	CONCRETE	CONCRETE
PIPE VALVE	PIPE VALVE	ASPHALT	ASPHALT
CON	CON		

**BENCHMARKS**  
 (as shown on 20)

ALL WORK IS TO BE DONE IN ACCORDANCE WITH THE SPECIFICATIONS AND CONTRACT DOCUMENTS. THE CONTRACTOR SHALL BE RESPONSIBLE FOR OBTAINING ALL NECESSARY PERMITS AND APPROVALS FROM THE APPLICABLE AGENCIES. THE CONTRACTOR SHALL BE RESPONSIBLE FOR OBTAINING ALL NECESSARY PERMITS AND APPROVALS FROM THE APPLICABLE AGENCIES. THE CONTRACTOR SHALL BE RESPONSIBLE FOR OBTAINING ALL NECESSARY PERMITS AND APPROVALS FROM THE APPLICABLE AGENCIES.

**LEGAL DESCRIPTIONS:**  
 E 1/2 OF SW 1/4 OF SECTION 5, T3S R5E, SC10 TOWNSHIP,  
 WASHINGTON COUNTY MORE COMMONLY KNOWN AS  
 DEXTER-HURON METROPARK  
 XXXXX VILLAGE OF DEXTER  
 SOIL TYPE: S6 mid Gf