

Public Space: streets, plazas, parks

Three rationales for the Library Lane Plaza

1. *Urban* rationale – Downtowns need outdoor living rooms that are
 - a.) spatially well defined, enclosed by buildings on at least three sides (ideal width is 100 ft.)
 - b.) activated by programmed, spontaneous and informal activities for diverse demographics
 - c.) with lots of entrances, windows, retail on the edges, as well as “eyes” on the plaza

Public Space: streets, plazas, parks

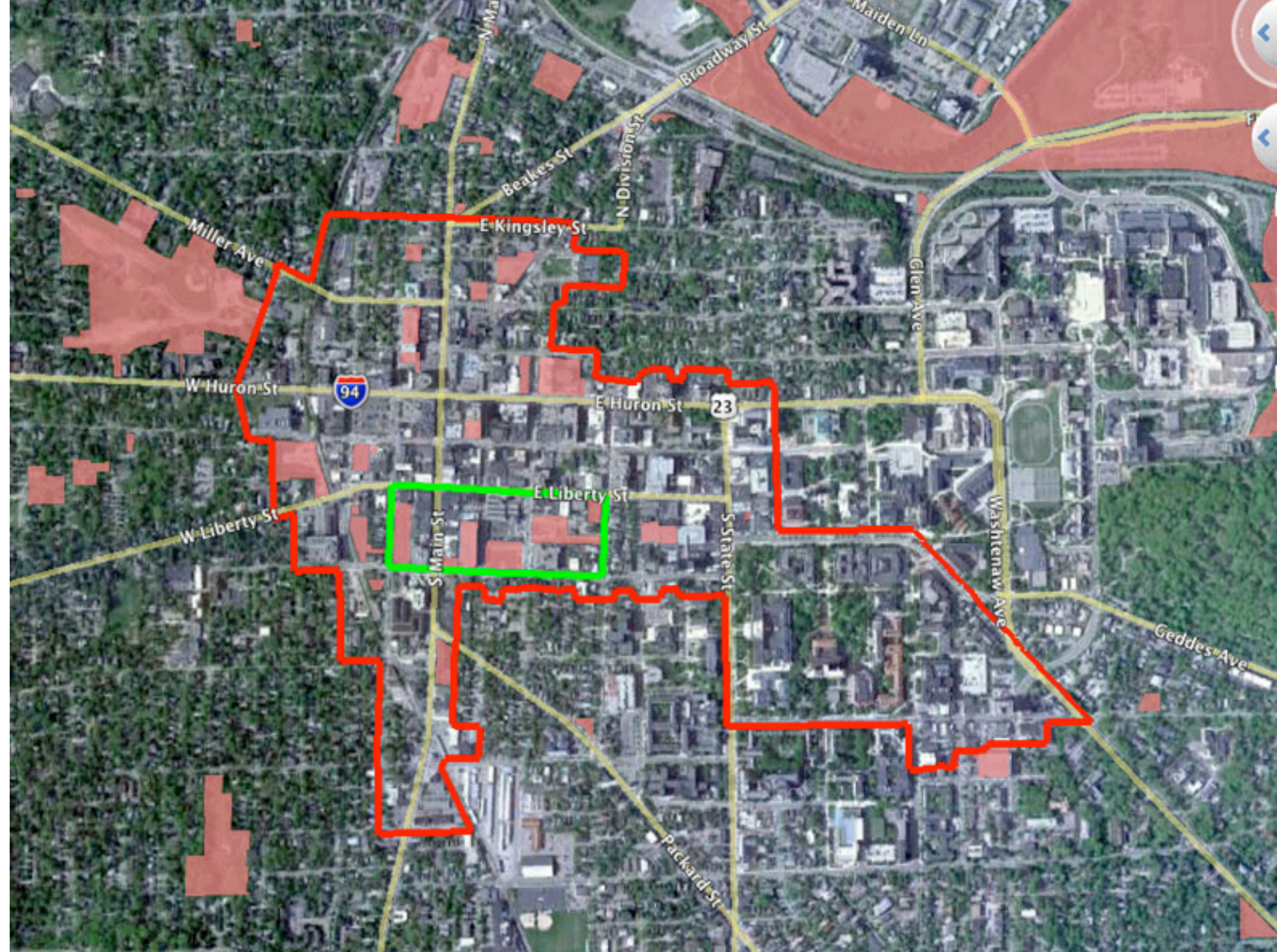
Library Lane Plaza

2. *Architectural* rationale – a plaza is better suited structurally for construction on top of parking garage than a park, which needs deep soil for trees and berms

Public Space: streets, plazas, parks

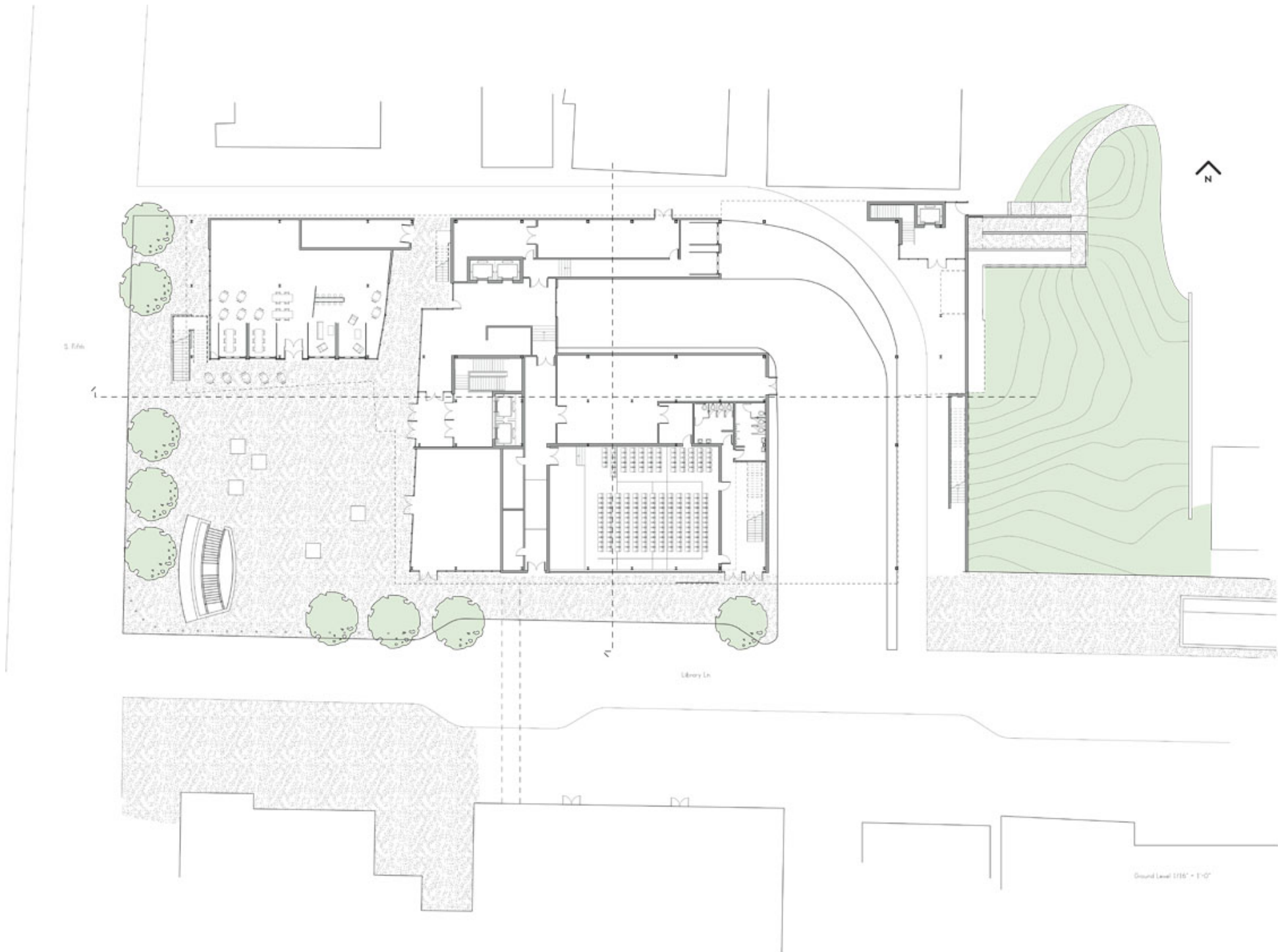
Library Lane Plaza

3. *Environmental* rationale – greener to have a dense, complete downtown than suburban sprawl (urban residents have smaller ecological footprints per capita)









Plaza Perspective

















a pedestrian path from greenway to campus?