



# DRAFT URBAN AND COMMUNITY FOREST MANAGEMENT PLAN



# ANN ARBOR'S URBAN & COMMUNITY FOREST

## WHAT IS THE URBAN AND COMMUNITY FOREST?

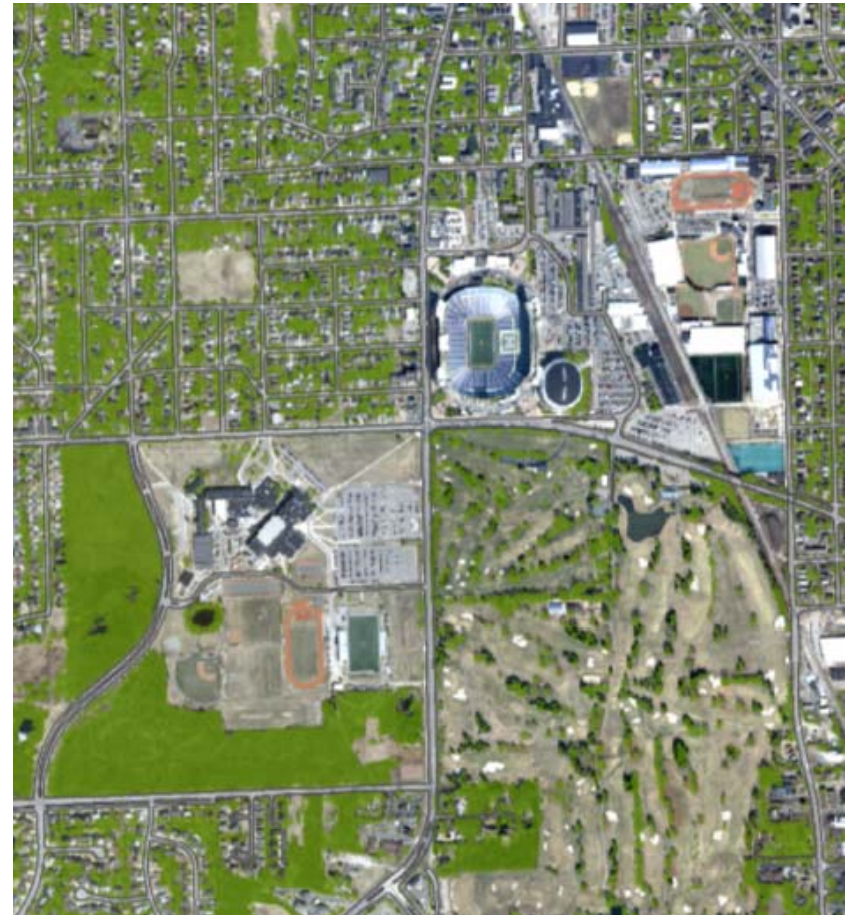
All of the trees, shrubs and woody vegetation growing along city streets, in public parks and on institutional and private property.

Approximately 25% of the urban and community forest is on public property and the remaining 75% is on private property.

There are an estimated **1.45 million trees** in Ann Arbor's urban and community forest.

The urban tree canopy is the layer of leaves, branches and stems of trees that cover the ground when viewed from above. The city's **urban tree canopy is 33%**

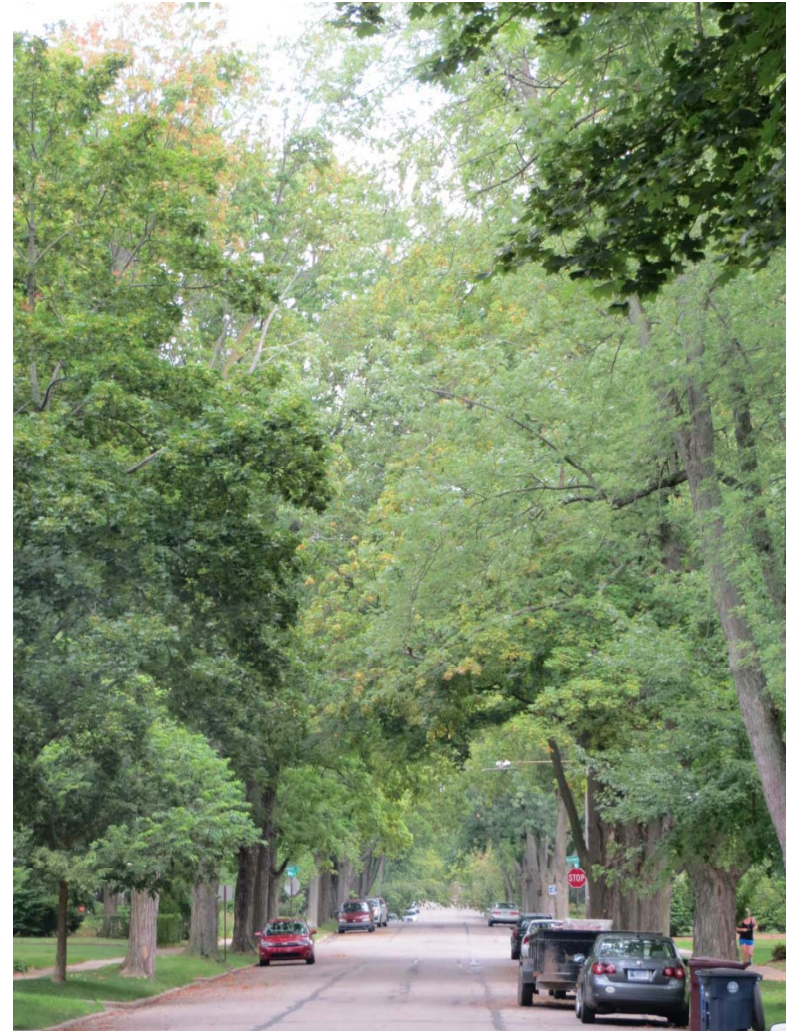
\*USDA Forest Service, iTree Eco Analysis (2012)



Green areas = tree canopy

# CITY-MANAGED URBAN & COMMUNITY FOREST

- **43,240 STREET TREES**
- **6,900 PARK TREES (MOWED AREAS)**
- **OVER 200 SPECIES REPRESENTING 82 GENERA**



# BENEFITS OF THE URBAN & COMMUNITY FOREST

## STORMWATER

- City-managed trees intercept 65 million gallons of rainwater per year reducing the quantity of stormwater entering local rivers & streams.

## ENERGY

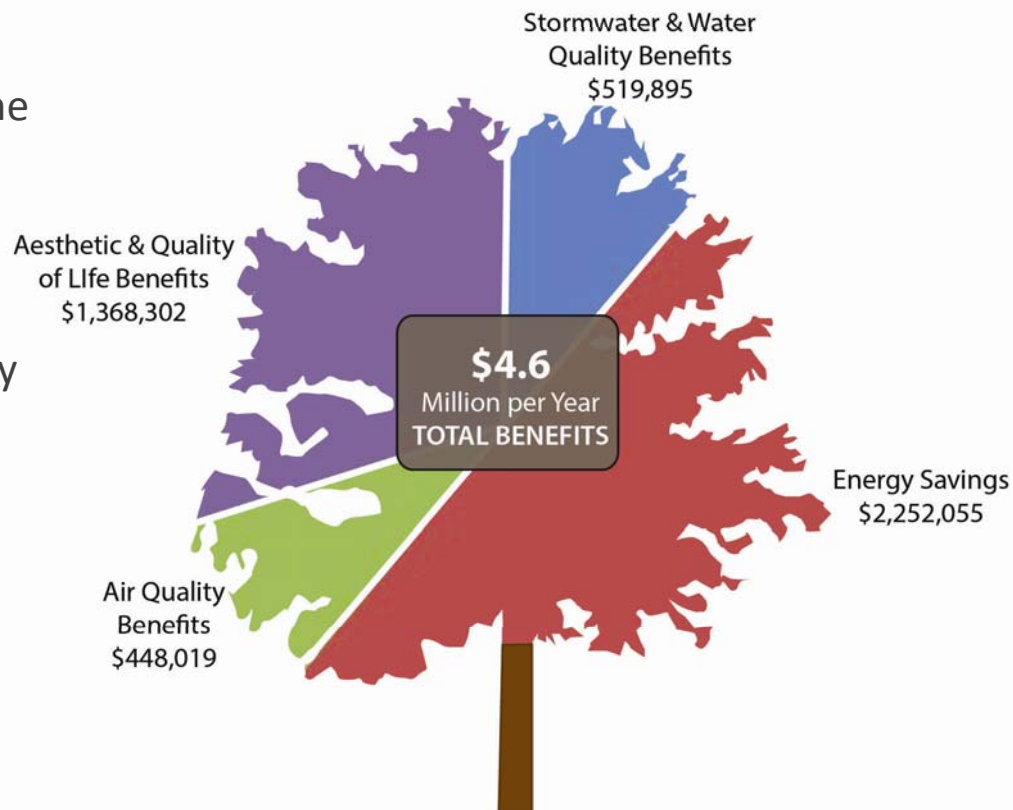
- Conserve energy use and reduce costs by shading buildings during the summer months

## AIR QUALITY

- Filter particulates and other pollutants out of the air helping to mitigate the health effects of air pollution.

## QUALITY OF LIFE/AESTHETICS

- Shopping areas with trees have higher retail expenditures than those without.



**Ann Arbor's city-managed trees provide over \$4.6 million in benefits each year!**

City of Ann Arbor i-Tree Streets Analysis (2009)

Two serious challenges over the last decade have impacted the city-managed urban and community forest:

- **Emerald Ash Borer**
- **Budget Reductions**



## Challenges have led to a deferment in street tree maintenance...

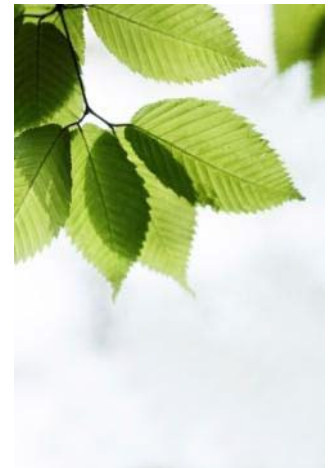
- causing a backlog in street tree maintenance; and
- placing the health and condition of the city-managed tree canopy at serious risk.

### Current Forestry Management Activities:

- Tree Removal (~550/year)
- Tree Planting (~1000/year)
- No routine pruning cycle or proactive maintenance

Management Activity	Street Tree Backlog As of July 1, 2013
Tree Removals	1,412
Priority Pruning (Trees requiring immediate pruning)	3,110
Routine Tree Pruning	38,471
Stump Removal	1,371
Plant tree	5,344

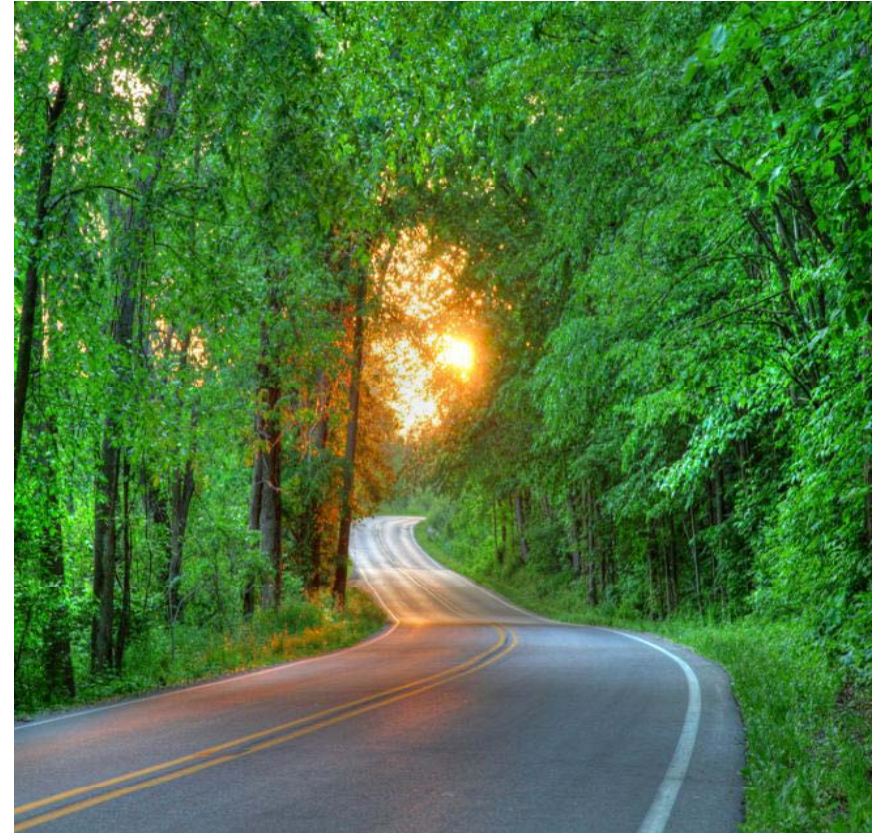
# DEVELOPMENT OF THE URBAN AND COMMUNITY FOREST MANAGEMENT PLAN



# PLAN DEVELOPMENT

The development of the City's *first* Urban and Community Forest Management Plan (UCFMP) was initiated to:

- Help address the effects of the last decade's challenges
- Effectively manage the urban and community forest as a sustainable asset consistent with the values and needs of the community
- Maximize its benefits





# PLAN DEVELOPMENT

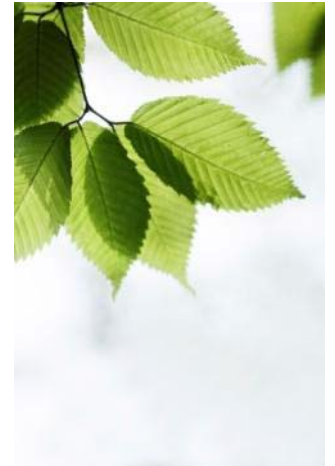
## Four Groups were engaged during the development of the UCFMP

Group	Description
<b>Working Group</b>	City staff and public engagement consultant, Smith Group JJR.
<b>Advisory Committee</b>	15-member group representing diverse community interests including, residents, businesses and institutions.
<b>Stakeholder Focus Groups</b>	Members representing a variety of stakeholders who have an interest in the urban and community forest, including, neighborhoods, business organization, City boards/commissions, public agencies, institutions, non-profits and City units.
<b>Ann Arbor Community</b>	General Public

# PLANNING STAGES & PUBLIC ENGAGEMENT



# ELEMENTS OF THE URBAN AND COMMUNITY FOREST MANAGEMENT PLAN



# UCFMP VISION

Ann Arbor's urban and community forest is a prominent feature of the city valued by its citizens for the positive contribution it makes to the quality of life and character of the community. The urban and community forest is a vital part of the city's green infrastructure system and is managed sustainably through sound practices, policies and community stewardship to provide environmental, social and economic benefits today and into the future.



# PLAN GOALS

The UCFMP goals help to achieve the City of Ann Arbor's Sustainability Framework Goal:

**Healthy Ecosystems** - Conserve, protect, enhance, and restore our aquatic and terrestrial ecosystems

## UCFMP OVERARCHING GOAL

*The sustainable protection, preservation, maintenance and expansion of the urban and community forest.*



## SUPPORTING GOALS

- Develop practices and policies to support a sustainable urban & community forest
- Devise and implement sustainable funding strategies
- Enhance and support ecological functions provided by the urban and community forest
- Ensure communication and coordination on proper management and protection standards
- Build and maintain community support
- Engage the community
- Promote the amenity uses of the urban and community forest

# UCFMP RECOMMENDATIONS

1. Implement proactive tree maintenance program
2. Strengthen tree planting and young tree maintenance programs
3. Monitor threats to the urban and community forest
4. Increase landmark/special tree protections
5. Secure adequate city-funding for urban forestry core services
6. Develop street tree master plans
7. Pursue grant and philanthropic funding opportunities
8. Strengthen forestry related ordinances
9. Update tree inventory and canopy analysis
10. Develop urban forest best management practices
11. Increase urban forestry volunteerism
12. Strengthen relationships with outside entities who impact trees.
13. Implement community outreach program
14. Obtain the best use of wood from removed trees
15. Create city staff working groups to coordinate projects that impact trees
16. Engage Environmental Commission in urban and community forestry issues
17. Review UCFMP periodically and update as needed.

# MAINTENANCE & MANAGEMENT RECOMMENDATIONS

16

- 1. Implement proactive tree maintenance program**
- 2. Strengthen tree planting and young tree maintenance programs**
- 3. Monitor threats to the urban and community forest**
4. Increase landmark/special tree protections
5. Secure adequate city-funding for urban forestry core services
- 6. Develop street tree master plans**
7. Pursue grant and philanthropic funding opportunities
8. Strengthen forestry related ordinances
- 9. Update tree inventory and canopy analysis**
10. Develop urban forest best management practices
11. Increase urban forestry volunteerism
12. Strengthen relationships with outside entities who impact trees.
13. Implement community outreach program
14. Obtain the best use of wood from removed trees
15. Create city staff working groups to coordinate projects that impact trees
16. Engage Environmental Commission in urban and community forestry issues
17. Review UCFMP periodically and update as needed.



# FUNDING RECOMMENDATIONS

1. Implement proactive tree maintenance program
2. Strengthen tree planting and young tree maintenance programs
3. Monitor threats to the urban and community forest
4. Increase landmark/special tree protections
5. **Secure adequate city-funding for urban forestry core services**
6. Develop street tree master plans
7. **Pursue grant and philanthropic funding opportunities**
8. Strengthen forestry related ordinances
9. Update tree inventory and canopy analysis.
10. Develop urban forest best management practices
11. Increase urban forestry volunteerism
12. Strengthen relationships with outside entities who impact trees.
13. Implement community outreach program
14. Obtain the best use of wood from removed trees
15. Create city staff working groups to coordinate projects that impact trees
16. Engage Environmental Commission in urban and community forestry issues
17. Review UCFMP periodically and update as needed.

# PARTNERSHIPS & OUTREACH RECOMMENDATIONS

1. Implement proactive tree maintenance program
2. Strengthen tree planting and young tree maintenance programs
3. Monitor threats to the urban and community forest
4. Increase landmark/special tree protections
5. Secure adequate city-funding for urban forestry core services
6. Develop street tree master plans
7. Pursue grant and philanthropic funding opportunities
8. Strengthen forestry related ordinances
9. Update tree inventory and canopy analysis
10. Develop urban forest best management practices
- 11. Increase urban forestry volunteerism**
- 12. Strengthen relationships with outside entities who impact trees.**
- 13. Implement community outreach program**
- 14. Obtain the best use of wood from removed trees**
- 15. Create city staff working groups to coordinate projects that impact trees**
- 16. Engage Environmental Commission in urban and community forestry issues**
17. Review UCFMP periodically and update as needed.

# POLICY & PROCEDURE RECOMMENDATIONS

1. Implement proactive tree maintenance program
2. Strengthen tree planting and young tree maintenance programs
3. Monitor threats to the urban and community forest
- 4. Increase landmark/special tree protections**
5. Secure adequate city-funding for urban forestry core services
6. Develop street tree master plans
7. Pursue grant and philanthropic funding opportunities
- 8. Strengthen forestry related ordinances**
9. Update tree inventory and canopy analysis
- 10. Develop urban forest best management practices**
11. Increase urban forestry volunteerism
12. Strengthen relationships with outside entities who impact trees.
13. Implement community outreach program
14. Obtain the best use of wood from removed trees
15. Create city staff working groups to coordinate projects that impact trees
16. Engage Environmental Commission in urban and community forestry issues
- 17. Review UCFMP periodically and update as needed.**

## TOP 5 RECOMMENDATIONS— THE PRIORITY FOR CITY RESOURCES 20

---

**RECOMMENDATION #1:** Implement a proactive tree maintenance program for Ann Arbor’s publicly-managed trees emphasizing routine pruning, removals and care to improve the health and sustainability of the tree canopy.

**RECOMMENDATION #2:** Develop and strengthen tree planting and young tree maintenance programs for both public and private trees.

**RECOMMENDATION #3:** Develop and implement a comprehensive program to monitor and address threats to the urban and community forest.

**RECOMMENDATION #4:** Increase the preservation and protection of landmark/special trees on public and private lands.

**RECOMMENDATION #5:** Secure adequate and sustainable city-generated funding to support an increased level of service for core urban forestry services and programs.

# UCFMP RECOMMENDATIONS

## FOR EACH RECOMMENDATION THE UCFMP PROVIDES:

- Description
- Action Tasks & Implementation Ideas
- Related Targets
- Case Studies
- City Staff and Resources Needed
- Additional Funding Resources Needed

**RELATED TARGETS**

- (1) Tree Canopy Cover Land Use Targets
- (4) Tree Diversity
- (5) Engage Volunteers

**CASE STUDIES:**

- **Philadelphia, Pennsylvania**  
Tree canopy cover can count as an impervious area credit towards a non-residential customer's stormwater charge. Credit is also given for tree planting. Property owners request the credits and they expire and must be renewed every 4 years.
- **Baltimore County, Maryland**  
"Growing Home Campaign" is an education and incentive program for planting trees on private property. The program provides a \$10 discount to residents at participating nurseries towards the purchase of a tree.
- **Los Angeles, California**  
Over the last 20 years, the City's Environmental Affairs Department has partnered with local community-based organizations to plant more than 80,000 trees on public property. Many of the planting locations were chosen to mitigate the urban heat island effect and reduce heat related illnesses and environmental issues as a result.

**RECOMMENDATION #2**

**Develop and strengthen tree planting and young tree maintenance programs for both public and private trees.**

**DESCRIPTION**

The tree canopy targets described in Chapter 4 set an ambitious goal for increasing the tree canopy across the city and optimize the benefits provided by the urban forest. While proactive maintenance (Recommendation #1) is vital to improving the health, condition and growth of the urban forest canopy, reaching the tree canopy targets will require both tree planting and young tree maintenance.

While there are currently over 3,600 vacant street tree planting sites along public right-of-ways, the majority of land in the city is privately owned. Working with different types of landowners, from residential to industrial, is important to ensure that tree planting is pursued where it is feasible and can be successful. Tree planting projects also need to be coupled with appropriate care during tree establishment. Proper care will ensure that newly planted trees live and thrive, because a shade tree planted today will take over 20 years to mature and provide the optimum ecological, economic and social benefits to the community.

**ACTION TASKS**

- A. Identify areas of the city to prioritize for public and private tree planting projects, including areas with low existing tree canopy cover and where canopy improvements can help meet canopy cover targets.
  - a. Consider areas with high incidences of heat-related health impacts and aging tree populations.
  - b. Encourage the use of large shade trees, where appropriate.
- B. Develop tree planting incentive programs to encourage tree planting and preservation on private property through partnerships with non-profit, civic, and other organizations.
  - **Implementation Ideas:**
    - Develop cost share programs with civic organizations that can assist homeowners and businesses with purchasing, planting, and maintaining trees.
    - Develop partnerships with nurseries to provide tree purchase and planting incentives in parts of the city most in need of canopy improvements. Utilize financial assistance from city, philanthropic organizations and/or nurseries.
- C. Develop procedures and guidelines for post-planting care (ex: watering) for public and privately owned trees. These procedures will be included in the best management practice manual (see Recommendation #10)
- D. Coordinate city-wide urban forest outreach and educational campaigns to teach community members about tree planting and care and to encourage them to become stewards of the urban and community forest.

Specific implementation scenarios for Recommendation #1 are provided in Appendix D

## MEASURING PLAN PROGRESS: TARGETS

**TARGET 1:** Achieve canopy cover goals by each land use category within 30 years.

**TARGET 2:** Increase the average condition rating of city-managed street and park trees from fair to good within 15 years.

**TARGET 3:** Complete a full routine tree pruning cycle for all city-managed street and park trees by 2023 and maintain a 7-year pruning cycle thereafter.

**TARGET 4:** Improve the composition of the urban and community forest within 30 years by planting a variety of tree species to increase the number of non-Maple (Acer) species to 85% of the street and park tree population.

**TARGET 5:** Increase and sustain the number of volunteers assisting with tree care and planting activities from 25 people to 100 people per year by 2020.

**TARGET 6:** Reduce the number of resident maintenance requests/complaints by 50% by 2023.

# Target 1: Canopy Cover Goals by Land Use

LAND USE CATEGORY	CURRENT CANOPY COVER	CANOPY COVER GOAL
COMMERCIAL	10%	15%
INDUSTRIAL	14%	25%
MIXED USE	9%	15%
OFFICE	19%	30%
PUBLIC/INSTITUTIONAL/ TRANSPORTATION/UTILITY	28%	40%
PUBLIC RIGHT-OF-WAY	24%	30%
RECREATION/OPEN SPACE	48%	50%
RESIDENTIAL	37%	60%

## NEXT STEPS

- **February:** Present Draft Plan at meetings of the Planning Commission, Park Advisory Commission and Environmental Commission.
- **February/March:** Accepting public comment on the Draft UCFMP through Friday, March 28
  - Plan available for viewing and downloading at [www.a2gov.org/ucfmp](http://www.a2gov.org/ucfmp)
  - Paper copies available upon request
  - Comments can be submitted to Kerry Gray, Urban Forestry and Natural Resources Planning Coordinator by email ([kgray@a2gov.org](mailto:kgray@a2gov.org)), mail, or fax
- **April:** Final Plan completed. Attend Park Advisory Commission and Environmental Commission to request resolution recommending City Council approve and adopt the Plan.
- **June/July:** City Council review and action



**THANK YOU!**

**QUESTIONS?**

Kerry Gray, [kgray@a2gov.org](mailto:kgray@a2gov.org)

Urban Forest & Natural Resources Planning Coordinator