

Highlighting the Impact

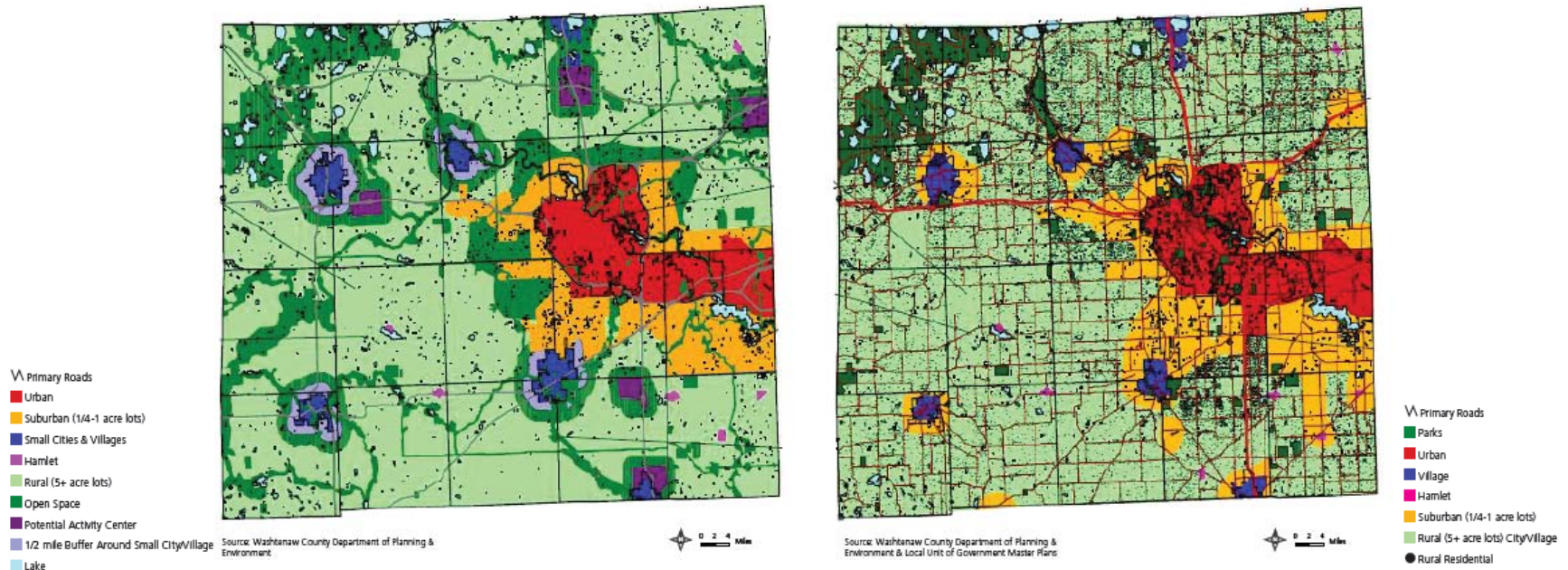
Supporting Smart Growth

Investment in public transit across the County will help focus land use development in those areas that can best accommodate it. This means:

- Building on brown-field sites rather than subdividing and developing agricultural land;
- Preserving green and rural areas;
- Protecting the rural character of smaller settlements and their residents' sense of community; and
- Creating walkable, bikeable, transit oriented developments with mixed land use and higher densities where appropriate.

This efficient compact development pattern is not just easier to serve with transit; it is easier to serve with most of the other major infrastructure elements – sewer, water, gas, electric, etc. This results in a major benefit in terms of the cost of providing and maintaining the non-transit infrastructure, a benefit that is not quantified in the estimate of benefits.

Washtenaw County with and without Action to Limit Sprawl



The two maps show two alternative views of the future depending on the future of land use and transportation planning.

On the left, strong land use and transportation plans help designate rural areas, rural settlements, suburban areas and urban areas to ensure that development occurs in the most appropriate locations and the character of our County is not lost.

On the right, growth is unrestricted, development is not necessarily located in appropriate areas, communities of all sizes are surrounded by sprawling development, and development infiltrates rural areas.