



ARGO POND
 Maintain approximate water surface for existing recreation uses such as rowing, canoeing & fishing.
 Normal water surface elevation approx 774.0 +/- ft.

New stone reinforcement

Existing Railroad Bridge
 Do Not Disturb Bridge Piers

Existing Canoe Underpass

Existing Argo Dam

Existing Park

Existing Canoe Livery and Lake Access

Existing Bike Path

H U R O N

R I V E R

SWIFT STREET

BROADWAY STREET



Existing Bike Path
 Replace with 10' wide paved trail at new grades shown

New clear-span Pedestrian Bridge over new channel 12'x25'

Remove existing embankment & match to existing river channel invert
 Tie into existing trail 768.0 +/-

Whitewater features (Future)

Whitewater Recreation Improvements Argo Dam Area

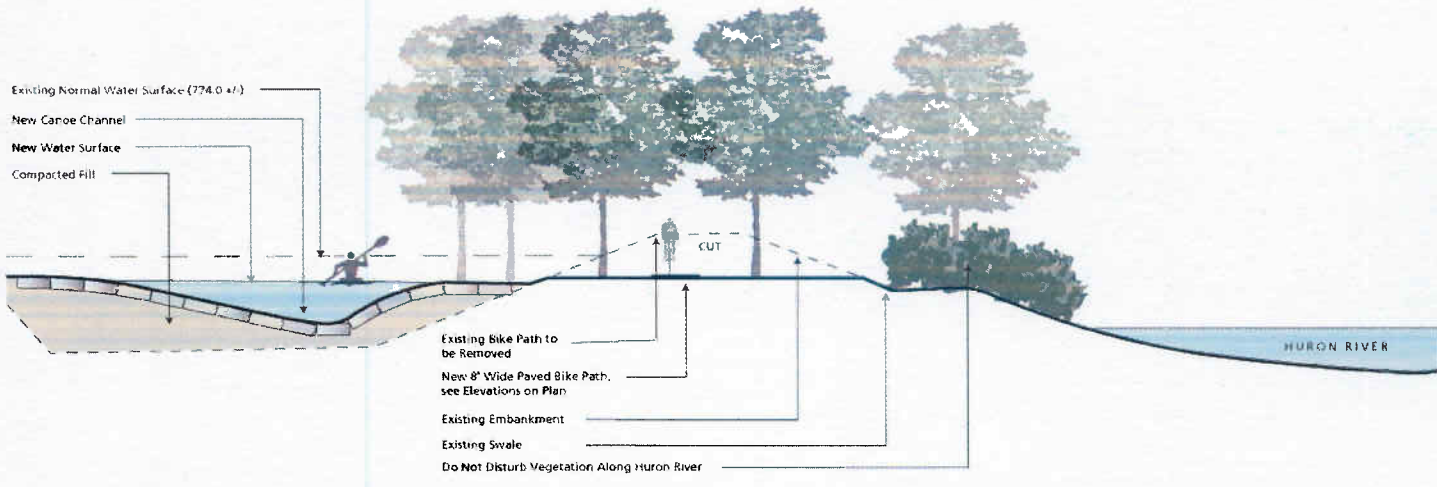
June 2011



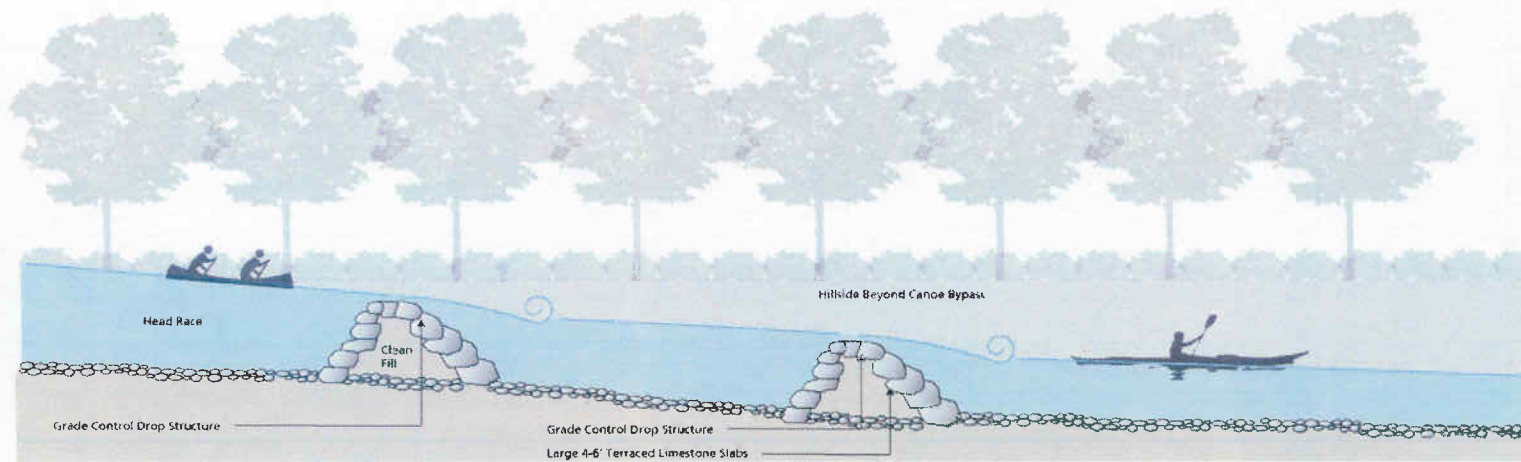
For information regarding this project, please contact Molly Wade at the City of Ann Arbor:
 734.794.6426
 mwade@qa2.gov.org



Original concept plan. Actual finished plan will differ slightly.



Canoe Bypass/ Fish Passage Channel Cross Section
View Looking Downstream



Canoe Bypass/ Fish Passage Channel Section/Elevation
Portion of the Bypass

Whitewater Recreation Improvements

Argo Dam Area

Ann Arbor, Michigan

September 2010



PIONEER BRIDGES

A division of Bailey Bridges, Inc.

With over 50 years of bridge design experience, the engineers at **Pioneer Bridges** have the ability to meet any bridge need. Our team has extensive experience with pedestrian and vehicular truss bridges... we are truly Pioneers in the industry. We are ready to accept any challenge from small pedestrian bridges and two-lane vehicular bridges to industrial conveyor and pipe support bridges.

With licensed professional engineers and our AISC certified fabrication facility, you can rest assured that your bridge project will be designed and fabricated with the highest level of quality available in the industry.



Pioneer Bridges are perfect for hiking/biking trails, golf courses, highway overpasses, industrial conveyor/pipe supports and vehicular bridges (one or two lane). From small garden bridges in your backyard and private driveway bridges to long clear span pedestrian bridges spanning wetlands and heavy highway loadings required by the construction industry, Pioneer has the right bridge for any project.



Every **Pioneer Bridge** is designed and constructed with safety as the ultimate value. Safe, durable, affordable... and beautiful. Pioneer Bridges fit naturally and attractively in any environment. Give us a call today and let the Pioneers of the industry help you meet your bridge needs.



Pioneer Bridges are available in several different truss styles and can be fabricated with multiple finish and floor options. Whether you want an elegant bow truss style or the classic pratt truss, Pioneer can provide them all. You can choose from virtually "maintenance free" weathering steel or from a wide variety of paint colors. Decking options range from pressure treated pine and lpe hardwood to concrete or grating.

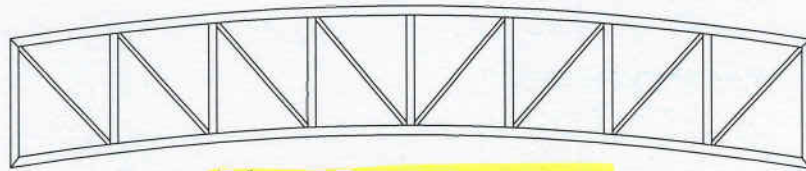


Pioneer Bridges can be fabricated in a wide range of sizes to fit your needs. Widths range from 5 feet to 30 feet and clear span lengths can be as long as 200 feet. With support piers (provided by others) you can span virtually any distance. Our prefabricated designs allow for easy installation. Bridges up to 12' wide by 70' long can be shipped in one piece. Larger bridges can be fabricated in pieces for shipment. All field splices are bolted to allow easy field assembly.

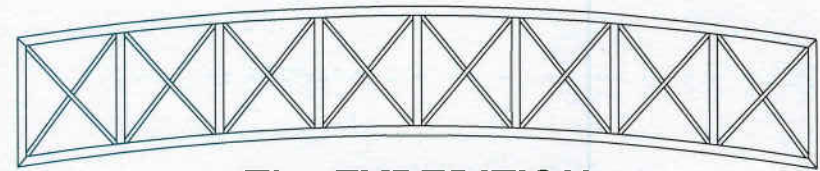
PIONEER BRIDGES

119 40th Street NE
Fort Payne, AL 35967
866-708-5778
256-845-7775 fax
www.pioneerbridges.com

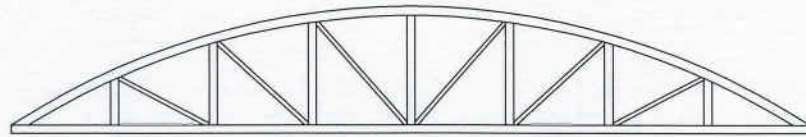




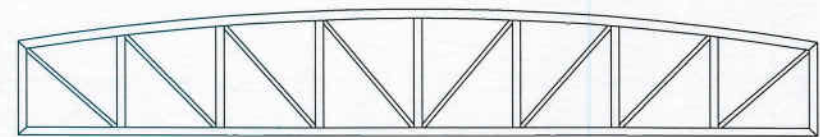
The TRAILBLAZER
(Pratt Truss)



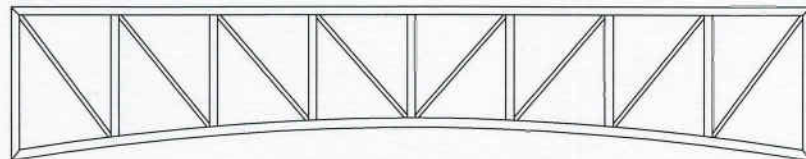
The EXPEDITION
(X-Braced Truss)



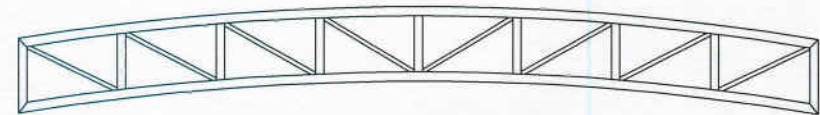
The CROSSBOW
(Bowstring Truss)



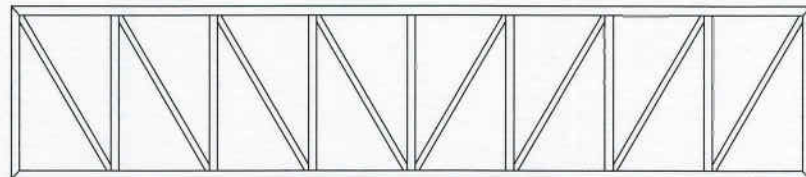
The CORNERSTONE
(Modified Bow-Truss)



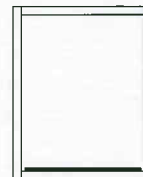
The APEX
(Arched Bottom Chord)



The HORIZON
(Low Profile)

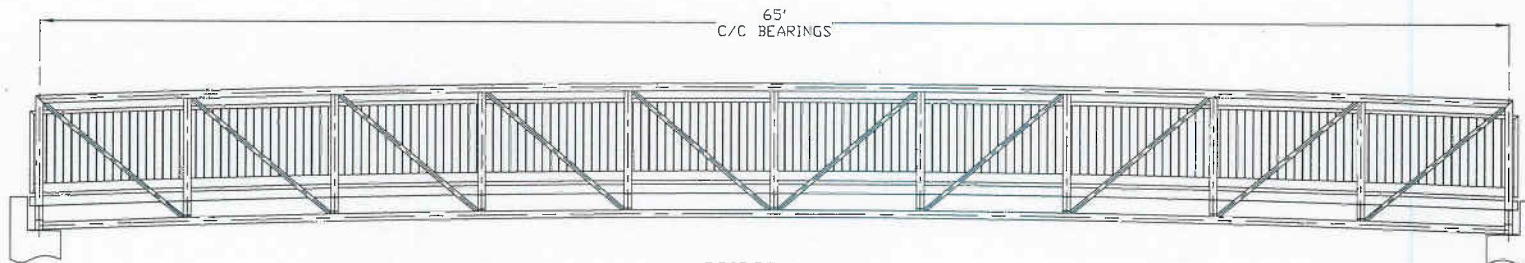


The GUARDIAN
(Full-Through Box Truss)

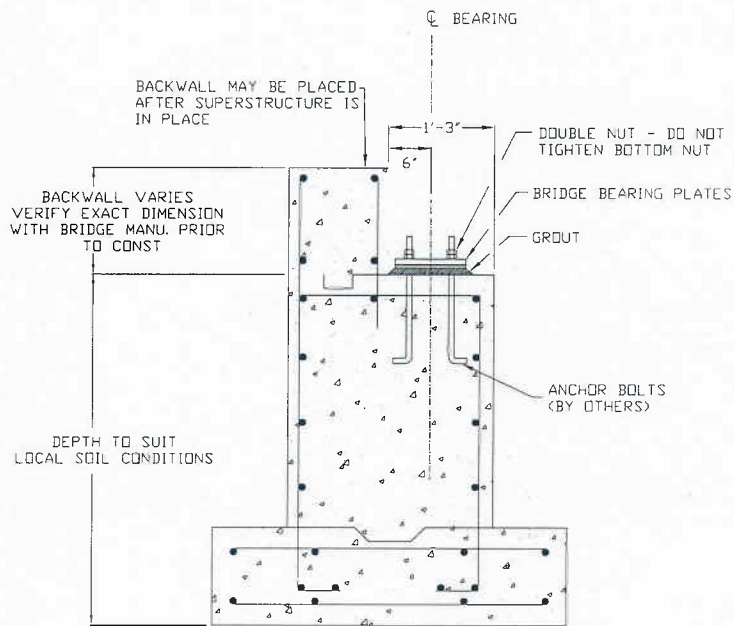


© Pioneer Bridge/Idage Systems

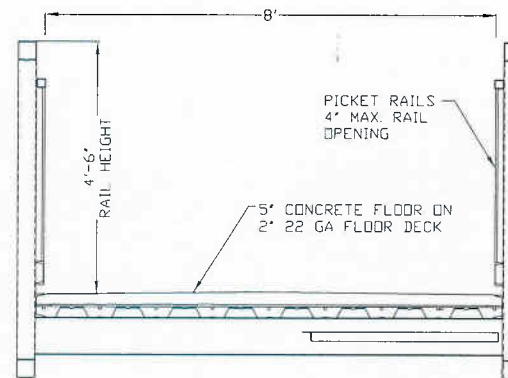
REV	A	X	X	X
DESCRIPTION			BY/DATE	CHECKED BY
		A DIVISION OF BAILEY BRIDGES, INC. 119 40th Street NE Fort Payne, AL 35967 1-866-708-5778		
PROJ. DESC.	REFERENCE DRAWING - BRIDGE STYLES		DRAWN BY:	AF
OWNER:	NOT FOR CONSTRUCTION		APPROVED BY:	X
ADDRESS:	X		CHECKED BY:	SW
CONTRACTOR:	X			
DESCRIPTION:	PIONEER BRIDGE STYLES			
THIS BRIDGE STRUCTURE SHALL NOT BE FIELD MODIFIED IN ANY WAY WITHOUT THE CONSENT AND APPROVAL OF PIONEER BRIDGES. THESE DRAWINGS ARE THE PROPERTY OF PIONEER BRIDGES AND ARE NOT TO BE COPIED OR USED IN ANY WAY DETRIMENTAL WITHOUT THEIR WRITTEN CONSENT.		JOB NO. X	REV.	
		SHEET: 1 of 1		



BRIDGE SIDE
ELEVATION VIEW



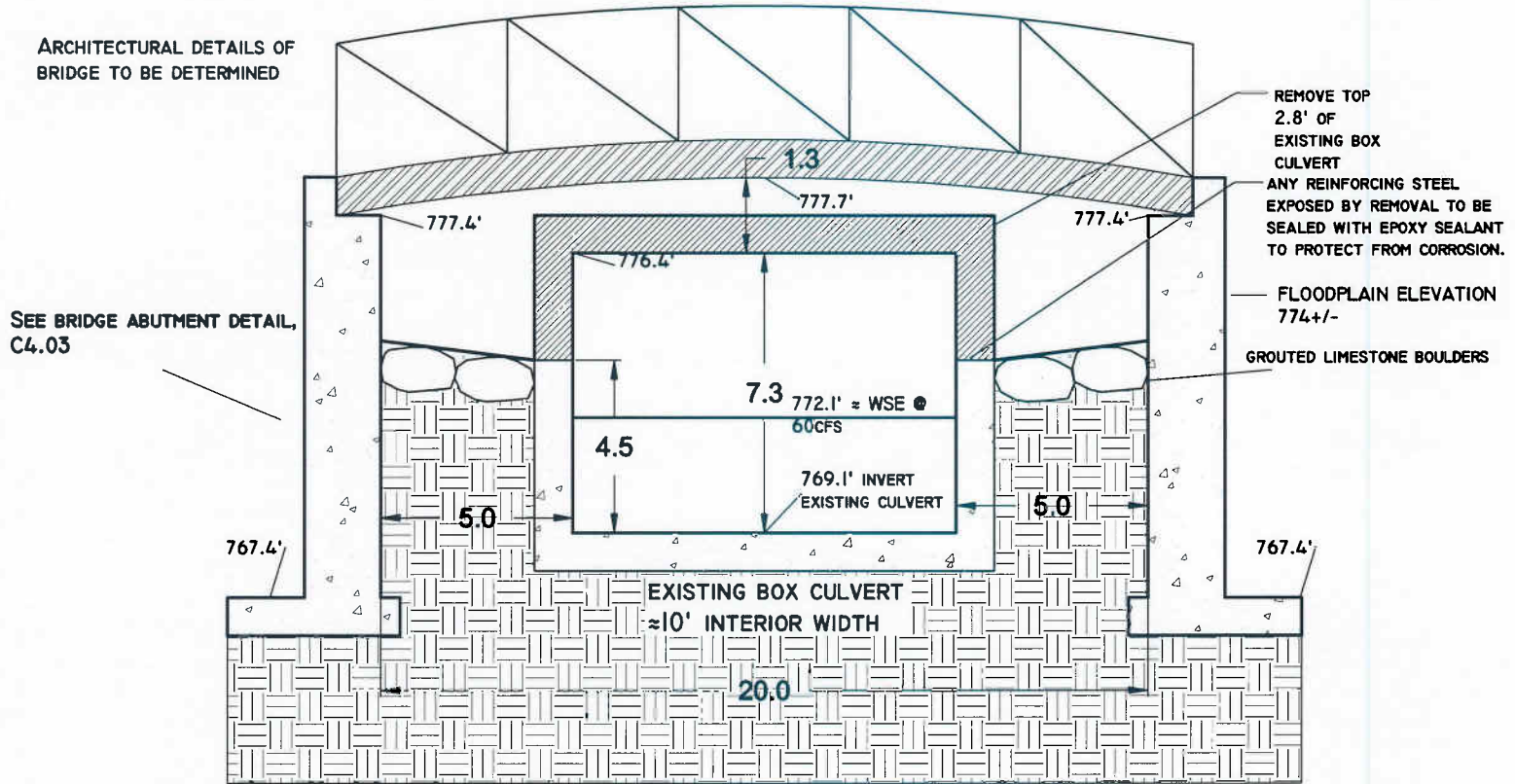
TYPICAL ABUTMENT CROSS SECTION
ABUTMENT TO BE DESIGNED BY OTHERS



BRIDGE CROSS
SECTION

NOT FOR CONSTRUCTION

REV	DESCRIPTION	DATE	CHECKED BY
A	X	X	X
A DIVISION OF BAILEY BRIDGES, INC. 119 4th Street NE Huntsville, AL 35897 1-866-706-5778			
PROJECT:	REFERENCE DRAWING	DRAWN BY:	AF
OWNER:	NOT FOR CONSTRUCTION	APPROVED BY:	X
ADDRESS:	X	CHECKED BY:	SW
CONTRACTOR:	X	DESCRIPTION:	8'x65' TRAILBLAZER PEDESTRIAN BRIDGE
THIS BRIDGE STRUCTURE SHALL NOT BE FIELD MODIFIED BY ANY MEANS WITHOUT THE WRITTEN AND APPROVAL OF PIONEER BRIDGES. THESE DRAWINGS ARE THE PROPERTY OF PIONEER BRIDGES AND ARE NOT TO BE COPIED OR USED IN ANY MANNER DETRIMENTAL WITHOUT THEIR WRITTEN CONSENT.			JOB NO. X SHEET 1 OF 1



6

Section - Proposed Upstream Bridge at Existing Box Culvert

No Scale