



Office of County Treasurer

200 N. Main Street, Suite 200
P.O. Box 8645
Ann Arbor, MI 48107-8645

Phone: (734) 222-6600
Fax: (734) 222-6632
e-mail: taxes@ewashtenaw.org

Catherine McClary, CPFO
Treasurer

For period ending: July 2011

To: Washtenaw County Accommodation Ordinance Commission
From: Catherine McClary, Treasurer

This report covers Accommodation taxes collected in August 2011 for the month of July 2011 and any prior. This excise tax is equal to 5% of the total charge for accommodations during the month of July and became due into Washtenaw County Treasurer's Office no later than August 15th.

The Washtenaw County Treasurer's Office received the following accommodation excise tax remittances:

<i>Tax Distribution:</i>	<i>Current</i>	<i>Year to Date</i>
<i>Total Taxes Collected</i>	\$368,963.61	\$2,127,316.28
<i>Washtenaw County</i>	\$36,896.36	\$212,736.63
<i>Net Distribution</i>	\$332,067.25	\$1,914,579.65
<i>Ann Arbor Area Convention and Visitors Bureau</i>	\$249,050.44	\$1,435,938.50
<i>Ypsilanti Area Convention and Visitors Bureau</i>	\$83,016.81	\$478,641.15

Notes

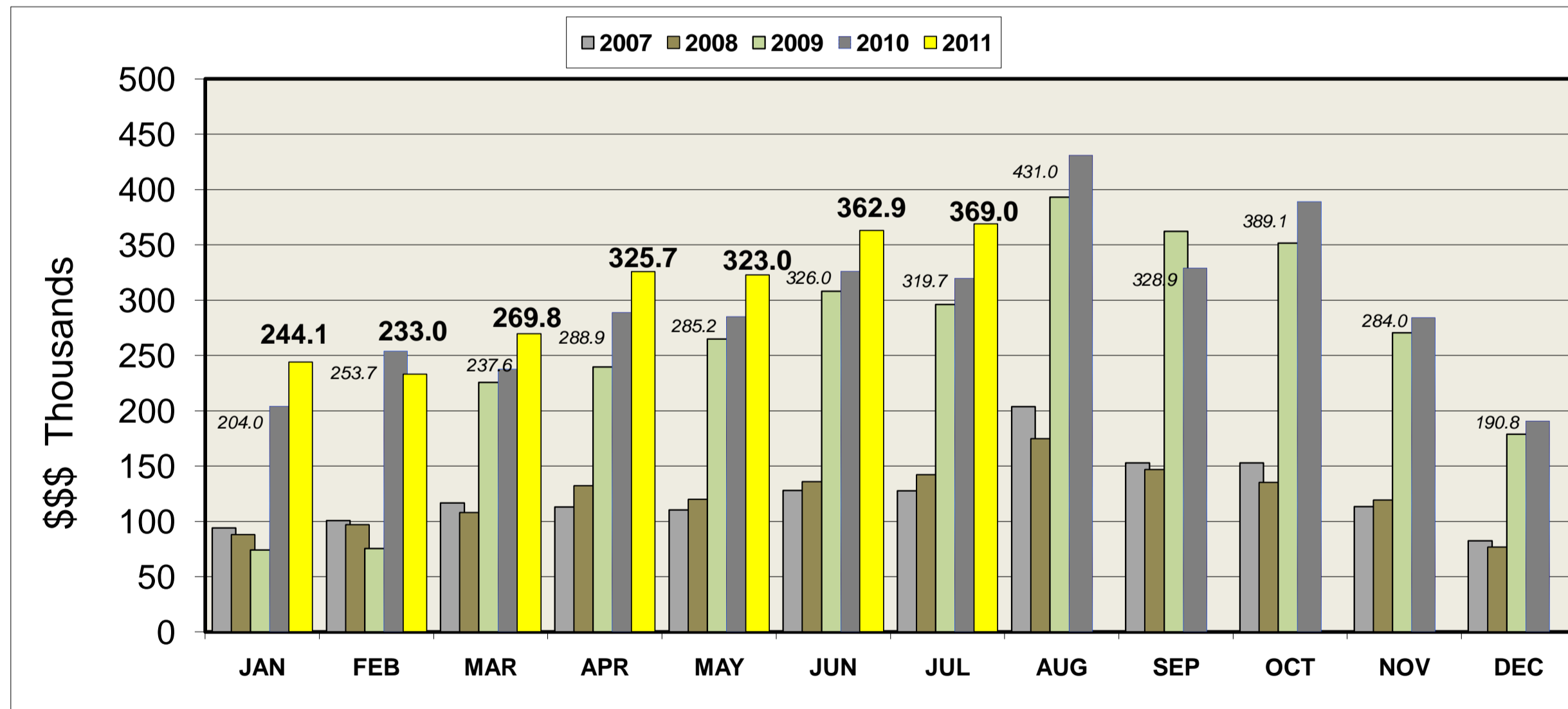
Steller House B&B
Ann Arbor B & B
Davies House B&B
Vitoshia Guest Haus

Delinquent – spoke w/owner
No marketing support - Legal remedies initiated
No marketing support - Legal remedies initiated
No marketing support - Legal remedies initiated

Washtenaw County Accommodation Tax Collections 2000-2011

	JAN	FEB	MAR	APR	MAY	JUN	JUL	AUG	SEP	OCT	NOV	DEC	Annual Total	% Change
2000	80,224.44	86,268.62	102,733.39	98,811.47	113,693.75	127,554.94	124,886.12	146,019.66	128,957.83	130,877.35	100,116.44	71,695.46	\$1,311,839.47	6.92%
2001	82,731.97	84,363.71	101,795.45	105,463.95	107,627.87	124,731.58	122,790.06	148,879.79	96,086.61	110,688.01	95,731.29	63,954.45	\$1,244,844.74	-5.11%
2002	79,412.70	86,717.69	97,571.48	105,611.53	109,957.03	124,705.62	117,366.31	153,047.97	105,145.14	122,269.78	95,716.94	62,224.71	\$1,259,746.90	1.20%
2003	73,967.43	73,437.57	89,450.99	98,612.67	90,650.36	114,223.95	124,285.60	146,237.66	118,238.05	121,258.54	93,230.78	61,762.36	\$1,205,355.96	-4.32%
2004	72,920.04	76,873.08	88,715.13	107,958.28	103,452.03	122,028.82	122,075.20	145,997.69	132,439.75	124,334.19	106,963.06	74,230.85	\$1,277,988.12	6.03%
2005	73,179.91	88,707.67	95,230.76	108,640.62	102,174.47	129,034.07	123,905.16	157,877.52	133,575.53	133,040.50	114,187.39	75,378.48	\$1,334,932.08	4.46%
2006	84,530.97	112,440.93	101,868.80	109,739.75	102,528.14	137,180.45	130,500.10	148,344.95	143,552.19	137,852.13	109,676.56	87,192.95	\$1,405,407.92	5.28%
2007	93,921.30	100,728.63	116,496.15	112,894.67	110,154.11	128,007.64	127,667.07	203,682.44	152,702.97	152,702.97	113,404.88	82,339.15	\$1,494,701.98	6.35%
2008	88,095.19	96,847.04	108,098.74	132,268.21	119,954.45	135,935.42	142,176.28	174,811.46	146,969.05	135,088.30	119,414.82	76,885.63	\$1,476,544.59	-1.21%
2009	74,007.19	75,574.58	225,618.12	239,717.52	264,746.84	307,997.47	295,891.23	393,129.13	362,148.45	351,686.23	270,454.11	178,802.81	\$3,039,773.68	105.87%
2010	204,039.13	253,705.62	237,610.54	288,877.95	285,212.83	325,972.33	319,737.04	431,017.02	328,916.21	389,121.86	284,030.95	190,771.74	\$3,539,013.22	16.42%
2011	244,081.19	232,986.77	269,779.34	325,671.62	322,962.97	362,870.78	368,963.61						\$2,127,316.28	

Monthly Comparison



Note: The Accommodation Excise Tax increased from 2% to 5% effective on March 1, 2009.

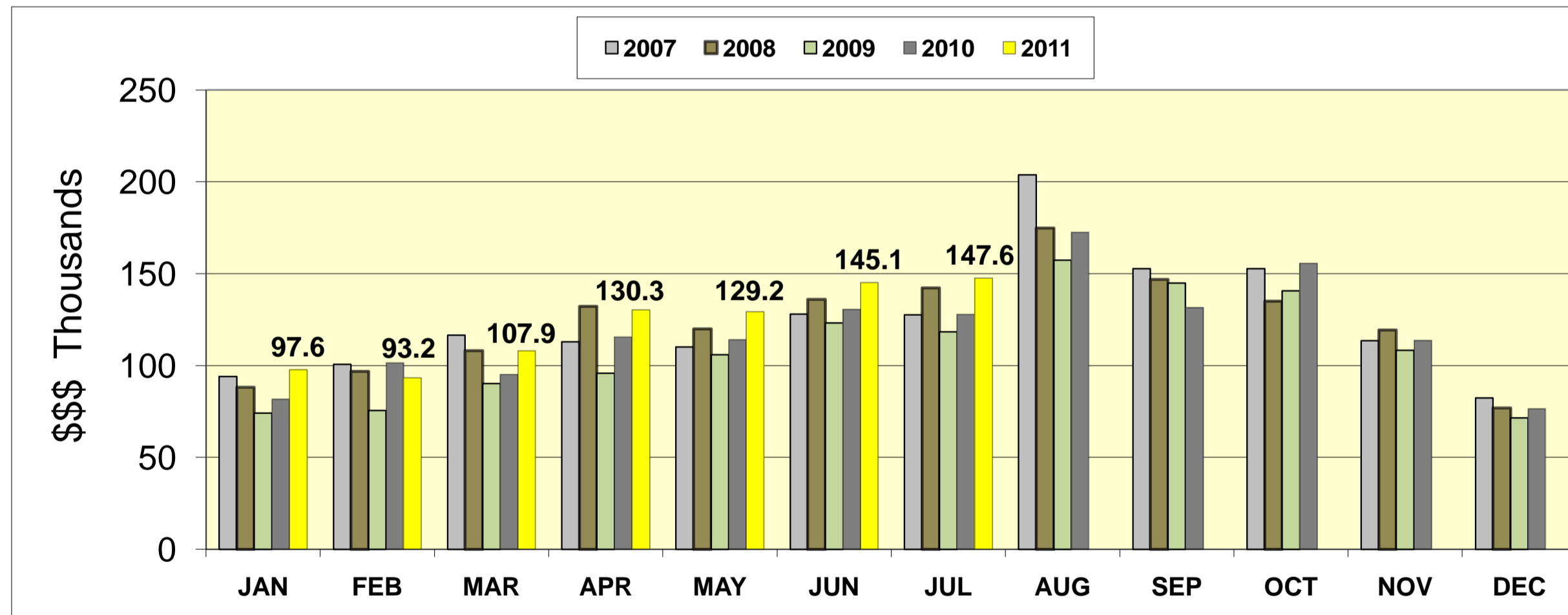
Prepared by:
 Catherine McClary, CPFO
 Washtenaw County Treasurer
 200 N. Main, Suite 200
 PO Box 8645
 Ann Arbor, MI 48107-8645
taxes@ewashtenaw.org

Washtenaw County Accommodation Tax Collections 2000-2011

Current Remittances at 5% Adjusted Down to the 2% Tax Rate

	JAN	FEB	MAR	APR	MAY	JUN	JUL	AUG	SEP	OCT	NOV	DEC	Annual Total	% Change
2000	80,224.44	86,268.62	102,733.39	98,811.47	113,693.75	127,554.94	124,886.12	146,019.66	128,957.83	130,877.35	100,116.44	71,695.46	\$1,311,839.47	6.92%
2001	82,731.97	84,363.71	101,795.45	105,463.95	107,627.87	124,731.58	122,790.06	148,879.79	96,086.61	110,688.01	95,731.29	63,954.45	\$1,244,844.74	-5.11%
2002	79,412.70	86,717.69	97,571.48	105,611.53	109,957.03	124,705.62	117,366.31	153,047.97	105,145.14	122,269.78	95,716.94	62,224.71	\$1,259,746.90	1.20%
2003	73,967.43	73,437.57	89,450.99	98,612.67	90,650.36	114,223.95	124,285.60	146,237.66	118,238.05	121,258.54	93,230.78	61,762.36	\$1,205,355.96	-4.32%
2004	72,920.04	76,873.08	88,715.13	107,958.28	103,452.03	122,028.82	122,075.20	145,997.69	132,439.75	124,334.19	106,963.06	74,230.85	\$1,277,988.12	6.03%
2005	73,179.91	88,707.67	95,230.76	108,640.62	102,174.47	129,034.07	123,905.16	157,877.52	133,575.53	133,040.50	114,187.39	75,378.48	\$1,334,932.08	4.46%
2006	84,530.97	112,440.93	101,868.80	109,739.75	102,528.14	137,180.45	130,500.10	148,344.95	143,552.19	137,852.13	109,676.56	87,192.95	\$1,405,407.92	5.28%
2007	93,921.30	100,728.63	116,496.15	112,894.67	110,154.11	128,007.64	127,667.07	203,682.44	152,702.97	152,702.97	113,404.88	82,339.15	\$1,494,701.98	6.35%
2008	88,095.19	96,847.04	108,098.74	132,268.21	119,954.45	135,935.42	142,176.28	174,811.46	146,969.05	135,088.30	119,414.82	76,885.63	\$1,476,544.59	-1.21%
2009	74,007.19	75,574.58	90,247.25	95,887.01	105,898.74	123,198.99	118,356.49	157,251.65	144,859.38	140,674.49	108,181.64	71,521.12	\$1,305,658.53	-11.57%
2010	81,615.65	101,482.25	95,044.22	115,551.18	114,085.13	130,388.93	127,894.82	172,406.81	131,566.48	155,648.74	113,612.38	76,308.70	\$1,415,605.29	8.42%
2011	97,632.48	93,194.71	107,911.74	130,268.65	129,185.19	145,148.31	147,585.44	0.00	0.00	0.00	0.00	0.00	\$850,926.51	

Monthly Comparison at 2% Collection Rate



Note: The Accommodation excise tax increased from 2% to 5% effective March 1, 2009.

Prepared by:

Catherine McClary, CPFO
 Washtenaw County Treasurer
 200 N. Main, Suite 200
 PO Box 8645
 Ann Arbor, MI 48107-8645
taxes@ewashtenaw.org