

Five Year Transit Program 4-Party Agreement Articles of Incorporation

Washtenaw County Board of Commissioners

Working Session

June 14, 2012

Improving Transportation for our residents: Economy and Jobs

- Transit gets people to work, helps connect workers to new jobs, attracts good companies, and keeps commuting affordable
- A two person household that downsizes to one car can save – on the average – more than **\$10,000 a year** (APTA). This creates tremendous opportunity
- The share of **young adults** (20- to 34-year-olds) without a driver's license has dropped from 89.6 percent in 2000 to **84.3** percent in 2010. (Federal Highway Administration Data).
 - the high cost of buying and maintaining a car and
 - a migration of young adults toward large cities, where there are more alternatives to driving.

Recent Improvements and Service Update

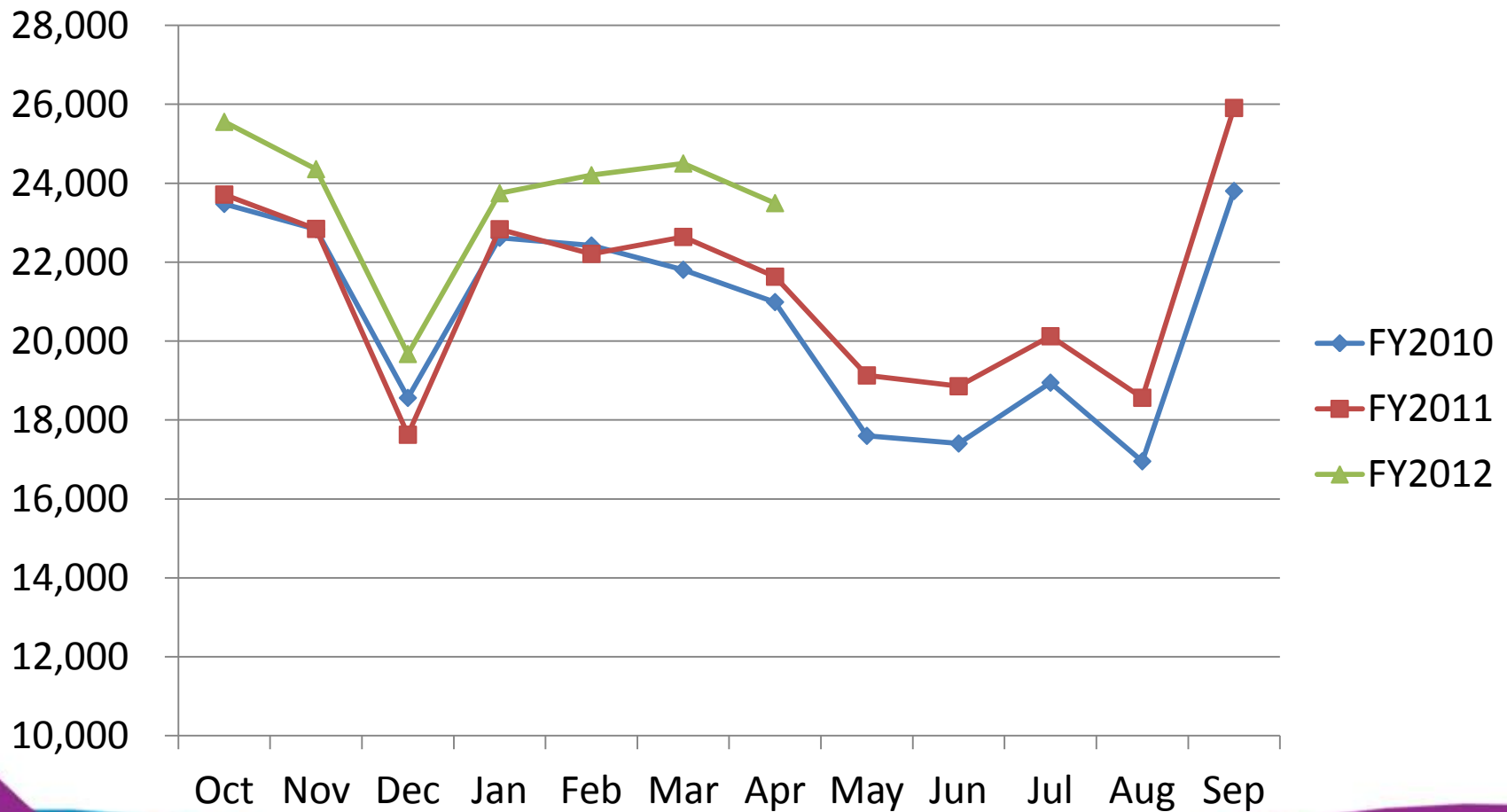


Recent Improvements and Service Update



AATA Average Weekday Riders

Fixed Route



Rider Survey, 2011

- 82% of our riders use the bus to get to and from work or school.
 - 45% use the bus to get to/from Work
 - 37% use the bus to get to school.
- More than 1/3 of riders choose public transit over driving their car.
- Riders are increasingly satisfied with service (12 out of 13 improved).
- Most common requests:
 - increased frequency
 - more direct routes.

FIVE YEAR TRANSIT PROGRAM

5-Year Program Highlights

Urban Area

- **More Frequent Service** *Buses come every 15 minutes (or less) on major corridors.* Local Ypsilanti routes will be increased to every 30 minutes during peak hours.
- **Extended Hours** You'll be able to catch the bus earlier (6am) or later (*midnight*) **on weekdays**. On weekends, most buses will run until **11pm on Saturdays and 9pm on Sundays**.
- **More Direct Routes** Ypsilanti Area and Westside Ann Arbor routes will be redesigned into new routes, offering **quicker and more direct service**.
- **Demand Responsive Services** Good as Good (Seniors) and ARide (people with disabilities) will have more service in the evenings and on the weekends. The services area will be extended in Ypsilanti, as well as the Townships of Ypsilanti, Pittsfield, and Scio.
- **Other Improvements** Real time/"next bus" information signs for passengers. Faster routes using bus priority for traffic signals. 100+ stops will be enhanced with waiting areas, benches, or modern shelters.

Countywide

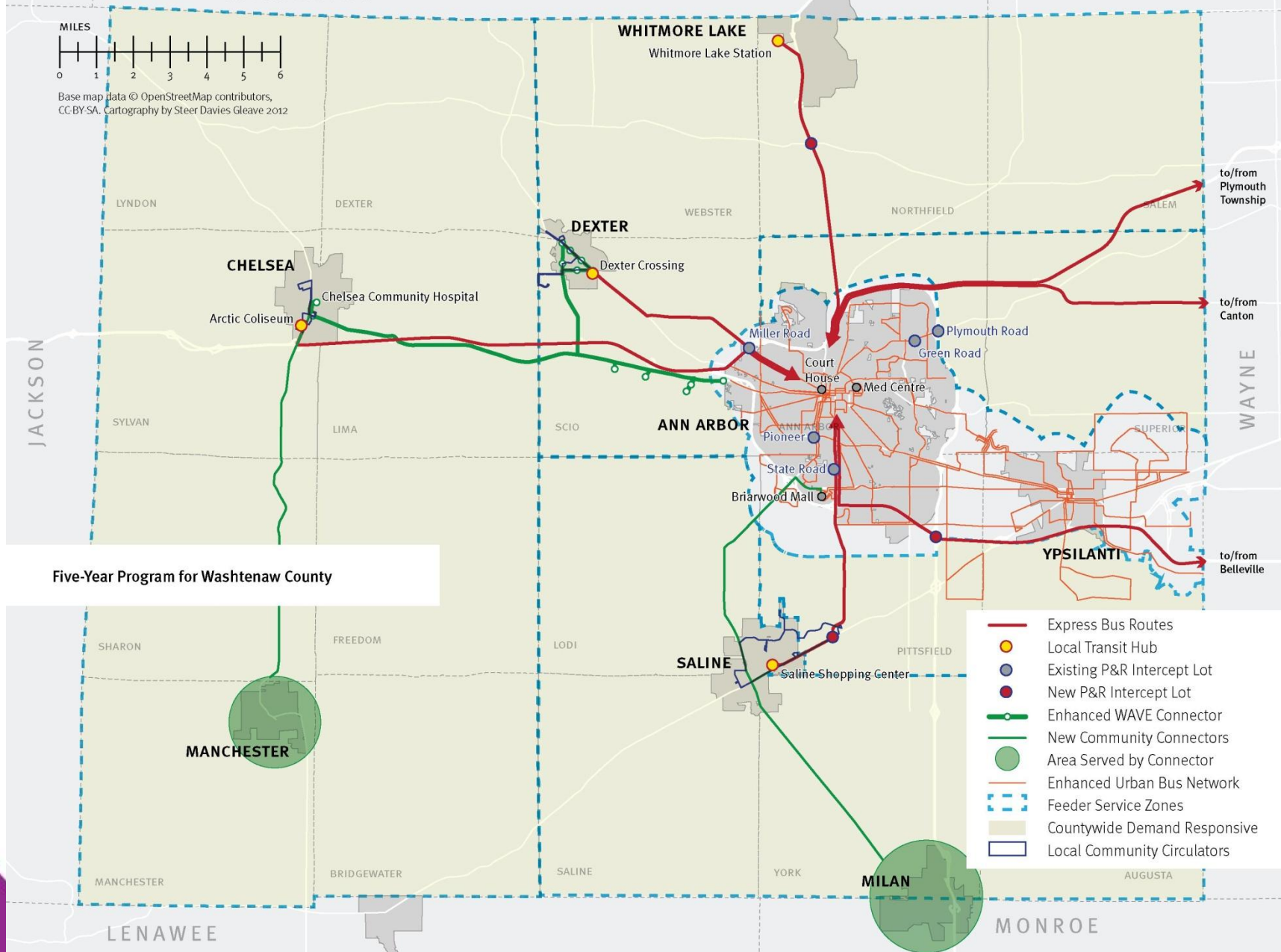
- **Local Circulators** Service that circulates in the local areas of Chelsea, Dexter, and Saline.
- **Community Connectors** New flex routes connect Milan, Saline and Ann Arbor; and Manchester with Chelsea. Buses, upon appointment, can pick up riders who do not live directly on the route.
- **Demand Responsive Service** Direct service to your destination for seniors and people with disabilities using a small, accessible, shared vehicle. Make an appointment and get a ride!
- **Feeder Service** Riders who don't live on a bus line can take a shared ride to the nearest transit hub in their town.
- **Express Services and "Park & Ride" Lots** Express buses run at peak commuting times, have a minimum number of stops, and free or reduced parking options. Park & Rides offer free parking and a quick bus ride into work.

LIVINGSTON

OAKLAND



Base map data © OpenStreetMap contributors,
CC-BY-SA. Cartography by Steer Davies Gleave 2012



Five Year Transit Program

4-PARTY

PUBLIC TRANSPORTATION AGREEMENT

4-Party Public Transportation Agreement

- 4-Parties:
 - Ann Arbor– Approved June 4
 - Ypsilanti– Approved June 5
 - AATA Board—Approved May 15
- Sets up **process** to create a new regional transit authority
 - Establishes that County acts in administrative role and that the choice to participate is up to the **local units of government**.
 - Allows transfer of existing millage funding to maintain existing services and have board seats
 - Conditions transfer of AATA assets and services on new funding

4-Party: What changed?

- Ballot Language
 - Ypsilanti requested ballot language clarify that a new funding source would be in addition to its existing charter millage. **[added]**
- Municipal Service Charge
 - Ypsilanti also wanted to remove the 1% Municipal Service Charges that are permitted on the *existing* Charter millages.
 - Ypsilanti will not be charging the 1% **[added]**
 - Ann Arbor will maintain their MSC, as they have since the 1970s as agreed to in our 1975 Operating Agreement.

4-Party Process: Before Incorporation

1. **Public outreach** and refinement of 5-Year Program
[Current stage]
2. At completion service and funding details , the U196/AATA will publish **final 5-Year Transit Improvement Program**
 - Presentations to local boards and community groups

4-Party Process: Incorporation

3. When ready, the U196/AATA will request County clerk to **file the Articles of Incorporation**. At that step, all communities will be officially notified of their choice to participate (or not).
 - Letter sent to all communities will clearly outline the choice to participate or not, and explain the process for doing so
 - Letter will go to any and all local government officials. This is not going to be a secret.
 - We will publish notification in each paper of record in the county
4. After a 30 day period, the **footprint of the authority would be established**.

4-Party Process: after Incorporation

5. Then, the new authority board and participating communities will **refine service details** if necessary.
6. When appropriate, the new authority board will create **ballot language and request funding from voters** within the authority footprint.
 - Vote, funding, and service only in communities that stay in the authority
 - Ballot language must be clear
7. **If the Ballot initiative.**
 - **Is Successful**
 - Fulfill remaining requirements of 4-Party
 - 196 board will start implementing 5-Year Transit Improvement Program
 - NOTE: Given the historical transit investment of Ann Arbor, they have reserved the right to withdraw if a ballot initiative succeeded throughout the county, but fails in the city.
 - **Is Unsuccessful**
 - AATA remains operational, as is.
 - New Authority may refine program or retry in next year

Five Year Transit Program

ARTICLES OF INCORPORATION

Articles of Incorporation

- Articles of Incorporation will need to be filed by the Clerk to create a new transit authority
- Committee representing 4-Parties and u196 board reviewed and revised draft Articles
 - Approved by Ann Arbor, Ypsilanti, and AATA board
- The Articles include:
 - Definition of board structure and need for majority of directors appointed and serving
 - Protections of labor agreements
 - Provisions ensuring local communities maintain all rights to opt out under the provisions of Act 196
 - Powers of the authority (e.g. bonding, etc...)

Your Role in the Process

- Agree to the **process** to incorporate a new transit authority
 - Allow local communities to choose to participate
 - Enables joint planning and clear communications about process
- You do NOT:
 - Force any community to participate,
 - Offer your full faith and credit or bonds
 - Automatically create an authority

Questions?