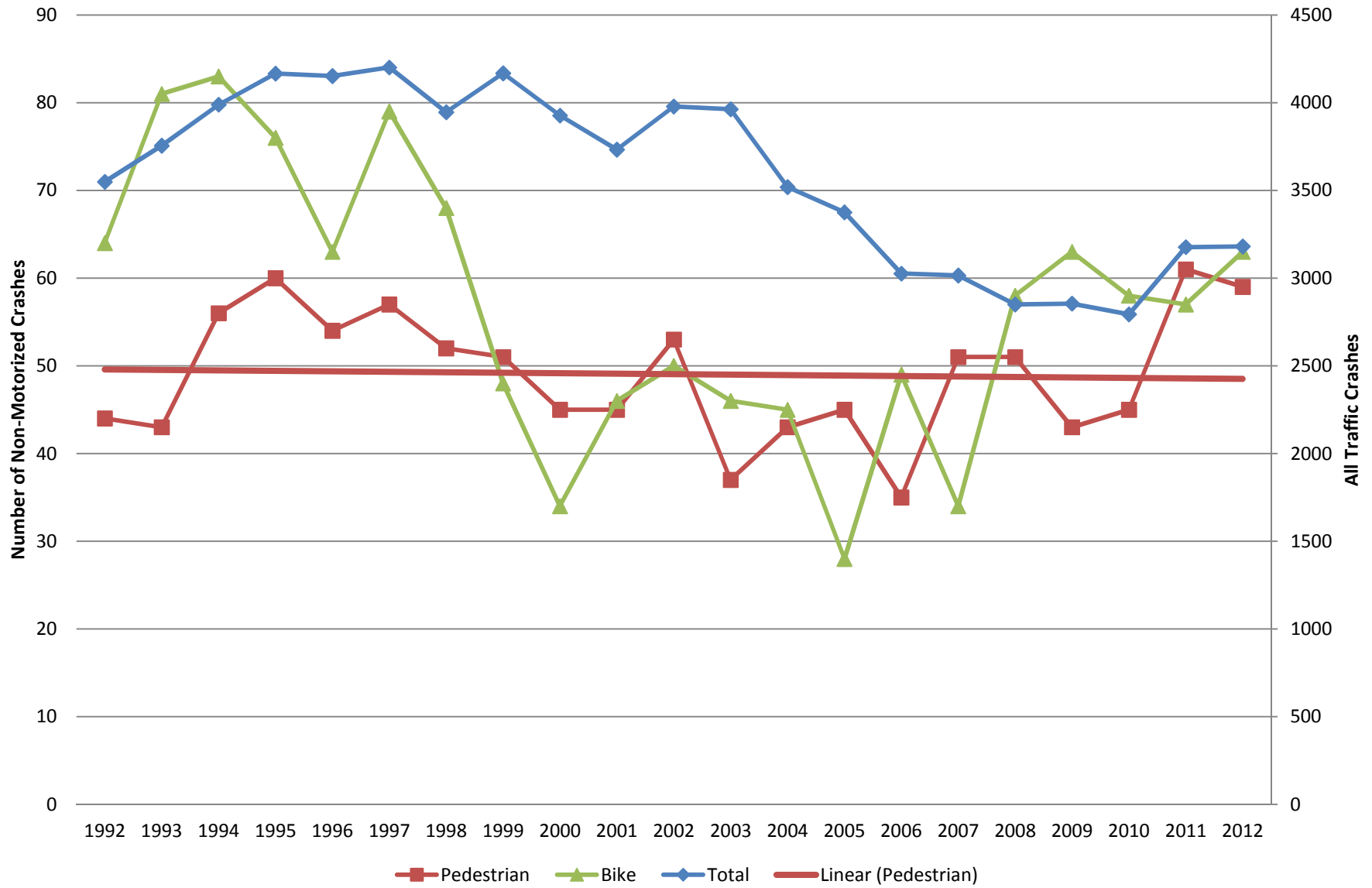


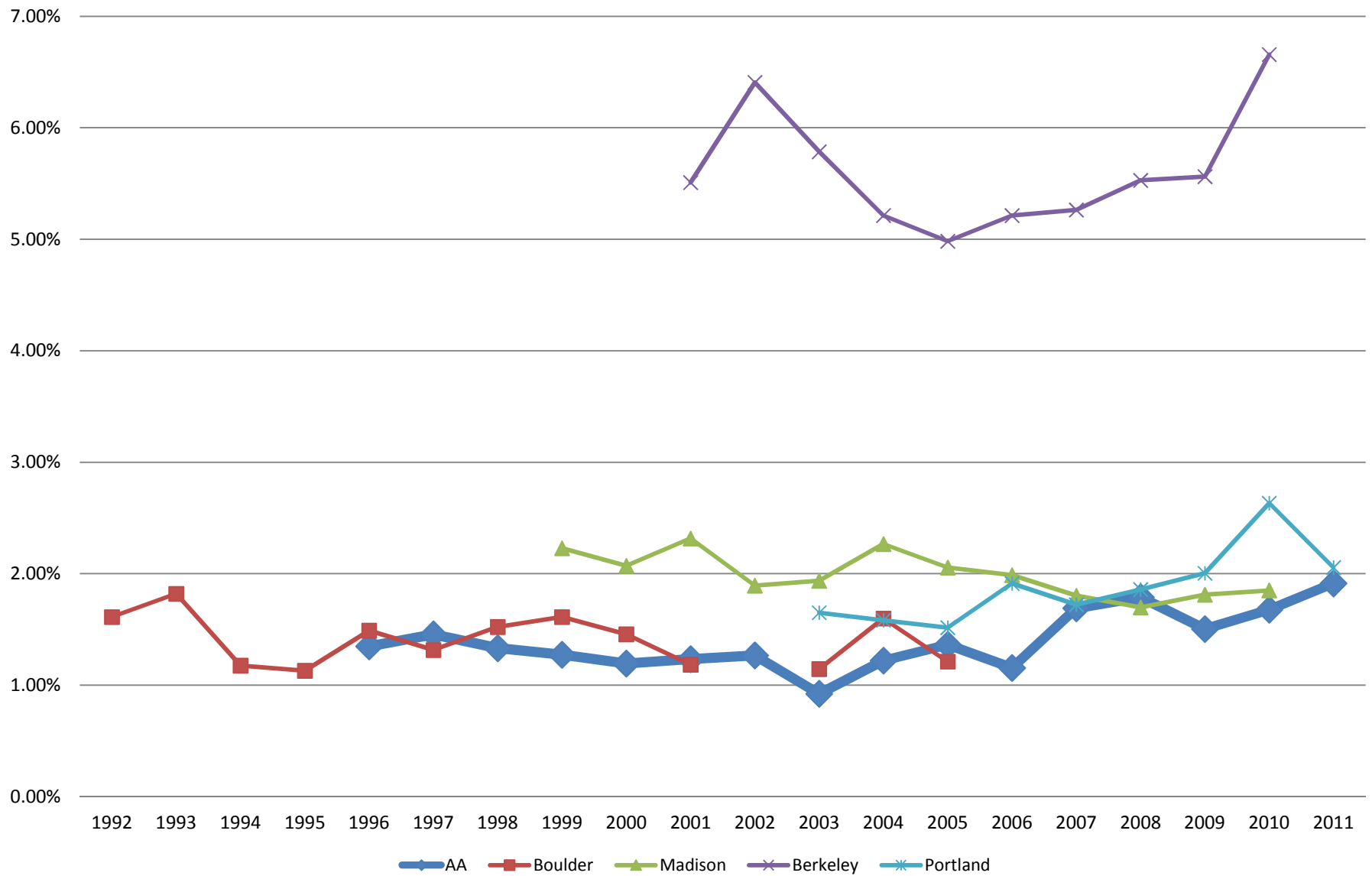
City of Ann Arbor

Number of Non- Motorized Crashes vs Total Traffic Crashes

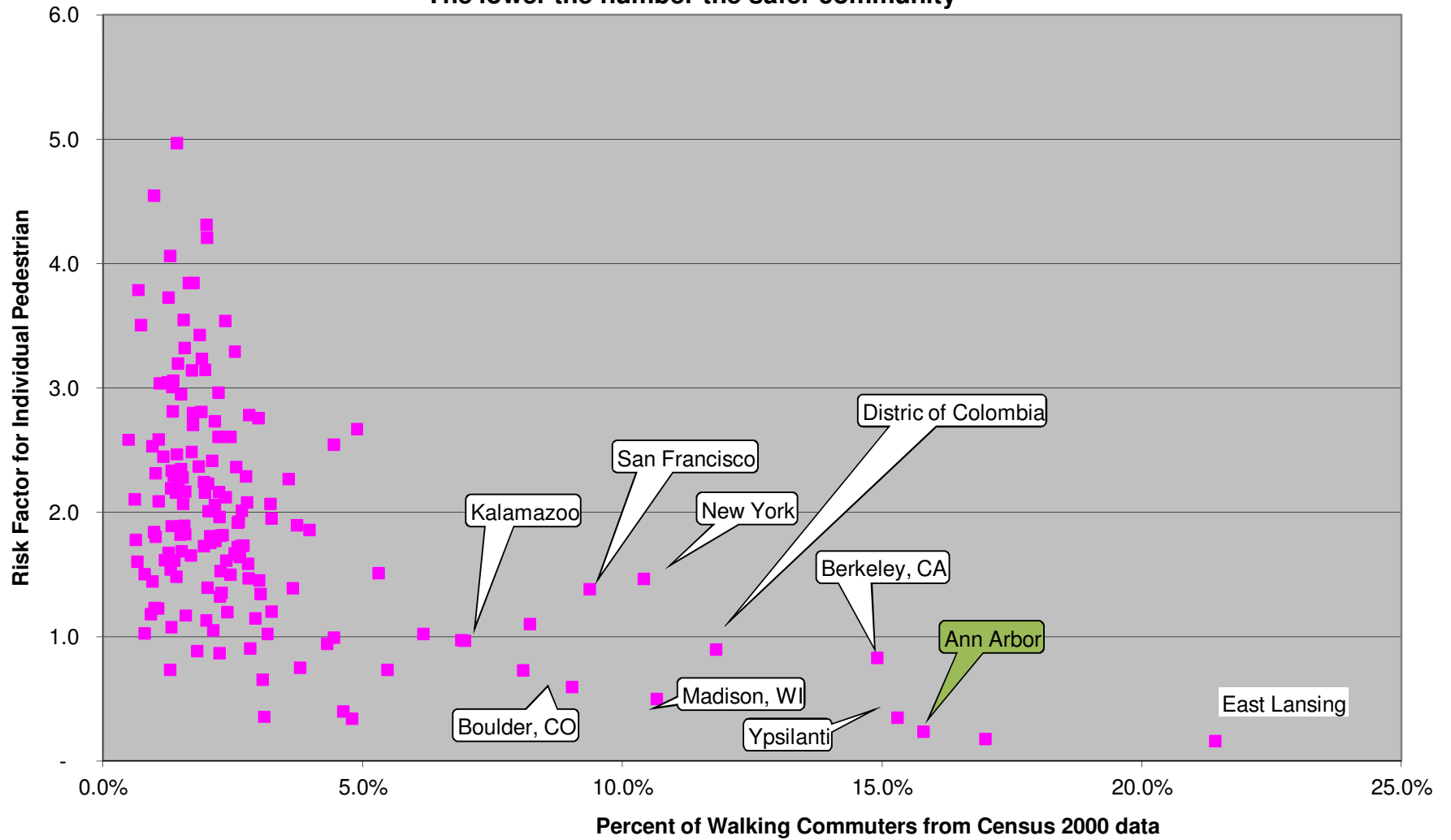


Comparison of Trends in Pedestrian Crashes in College Cities

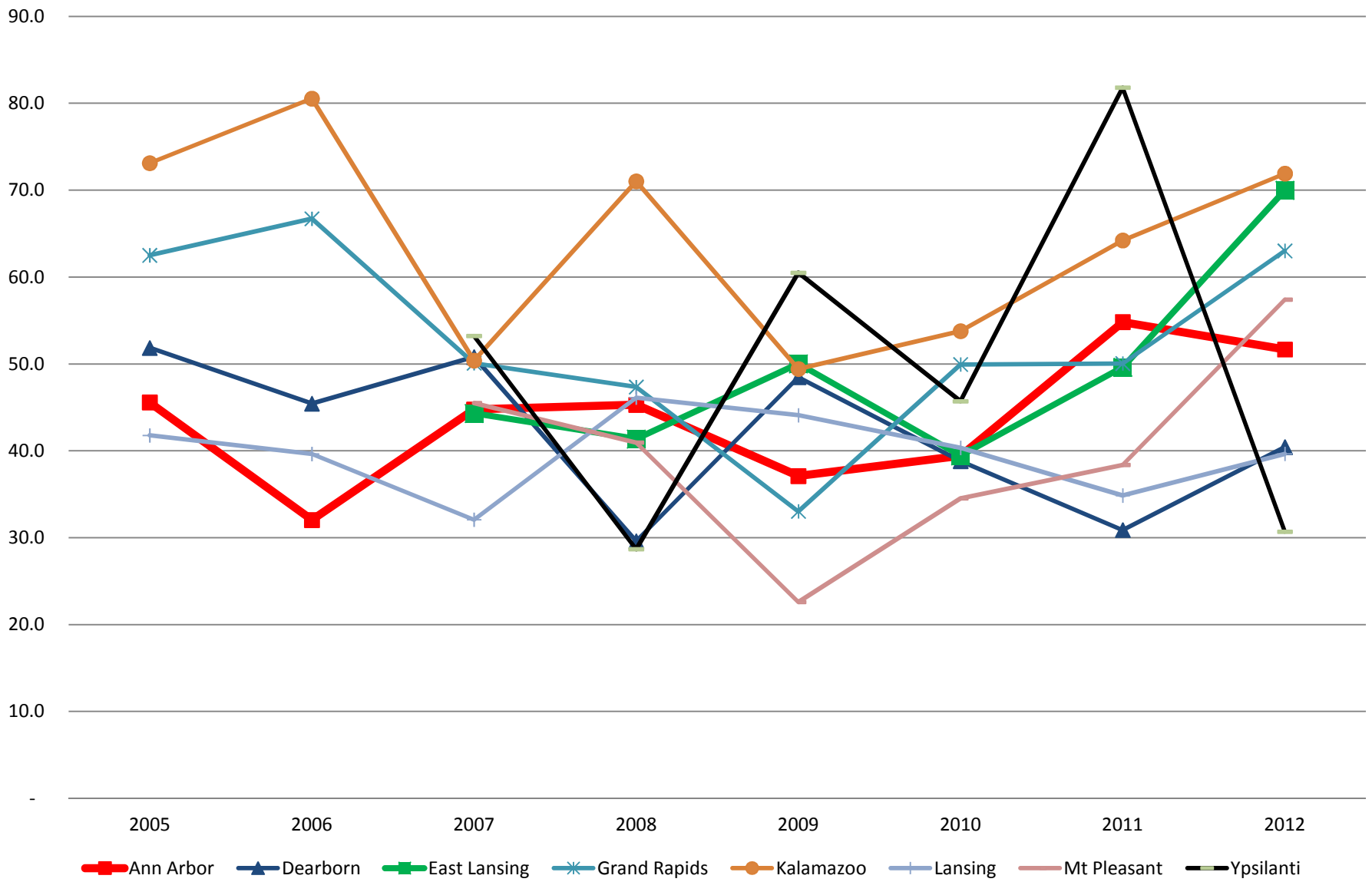
Pedestrian Crashes as percentage of All Crashes

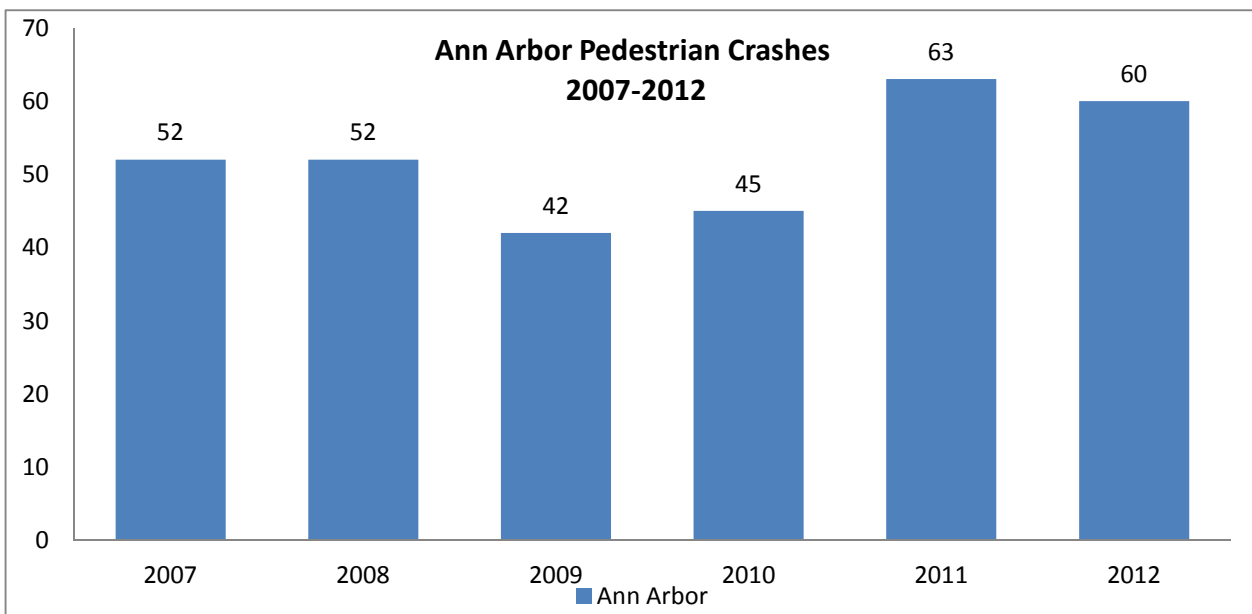
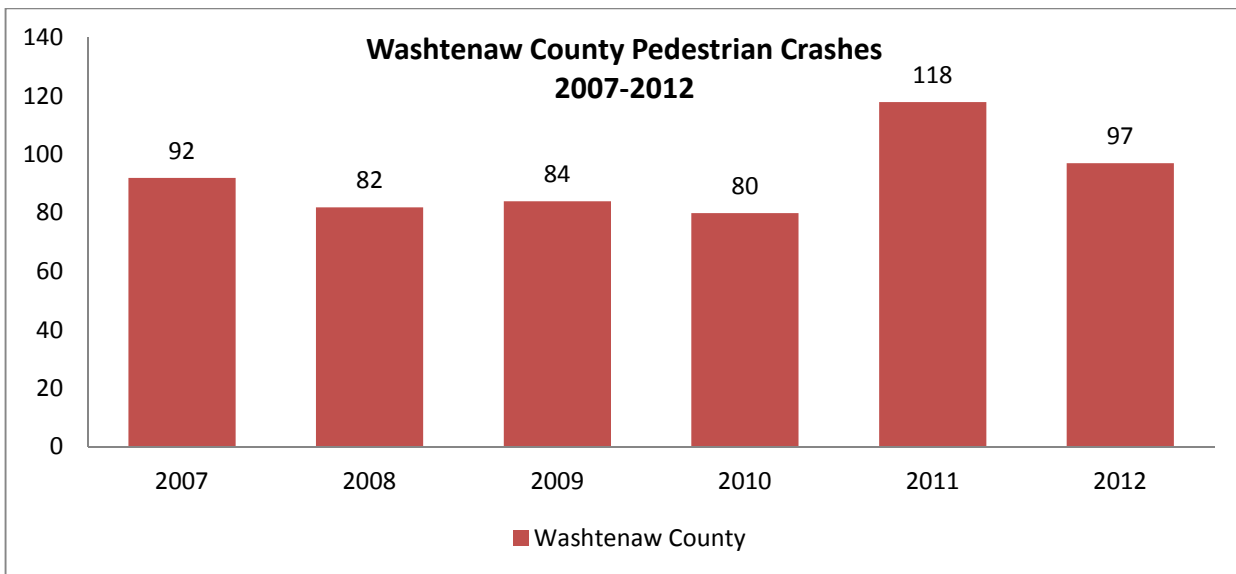
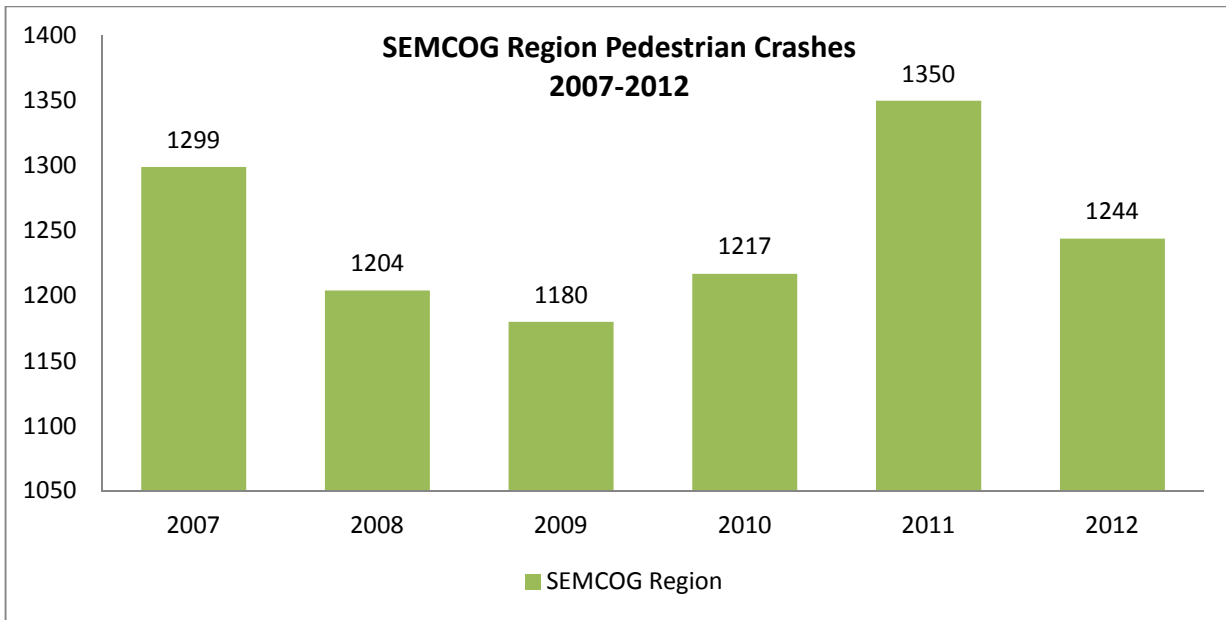


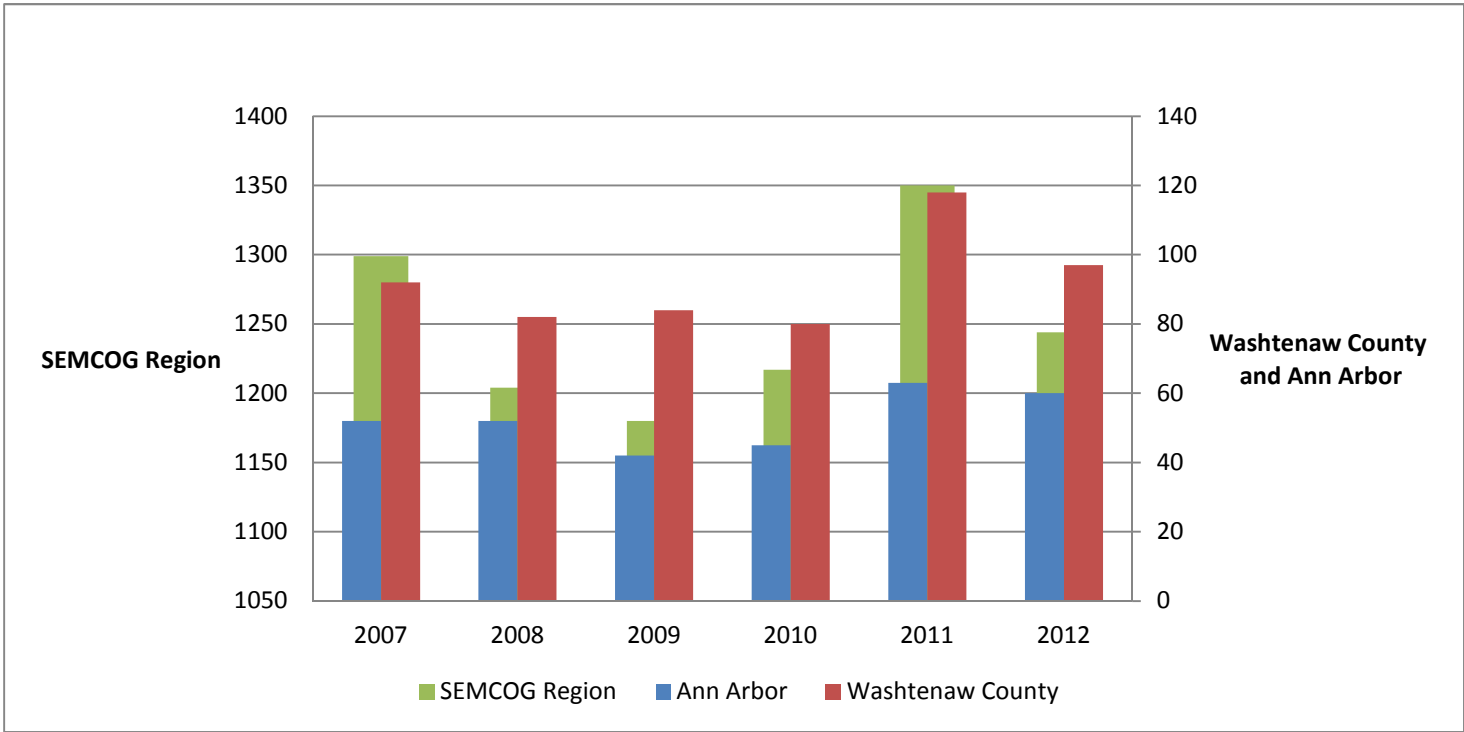
Risk Factor to Individual Pedestrian
(Rate of Pedestrian Crashes by Population to % of Walking Population)
The lower the number the safer community



Pedestrian Crash Rate in Michigan College Cities

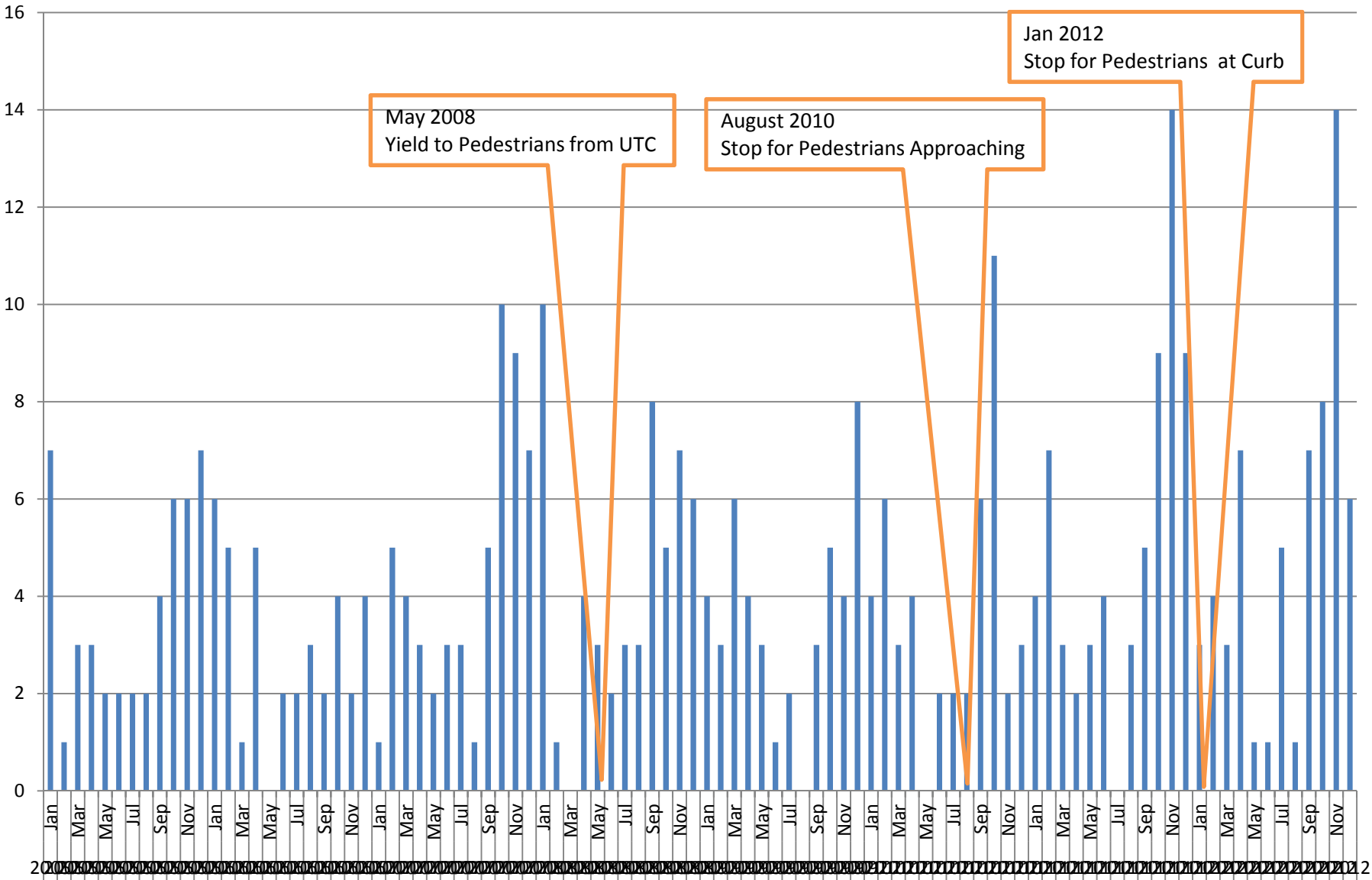


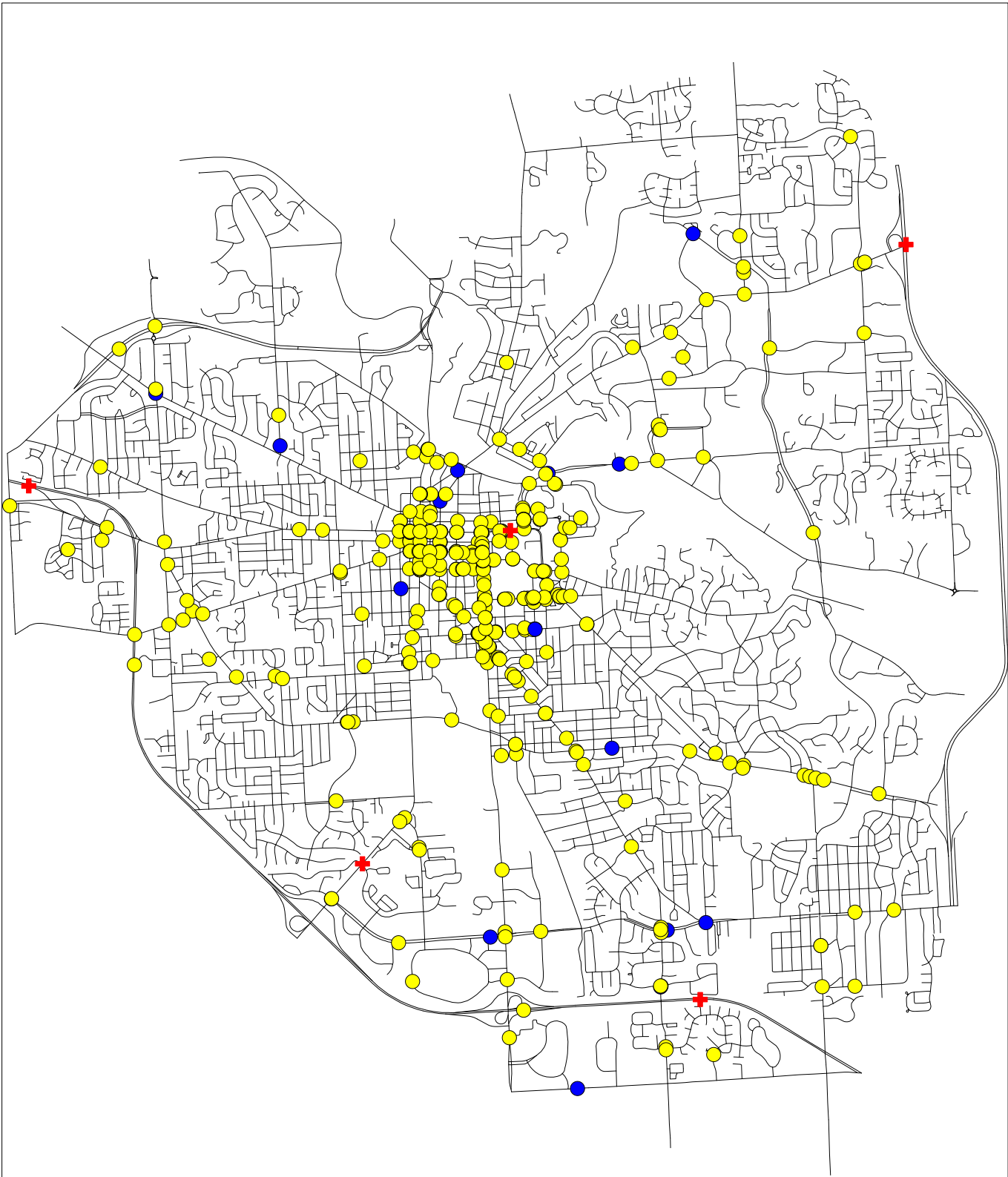




	2007	2008	2009	2010	2011	2012
Ann Arbor	52	52	42	45	63	60
Washtenaw County	92	82	84	80	118	97
SEMCOG Region	1299	1204	1180	1217	1350	1244

City of Ann Arbor Monthly Number of Pedestrian Crashes from 2005 to 2012



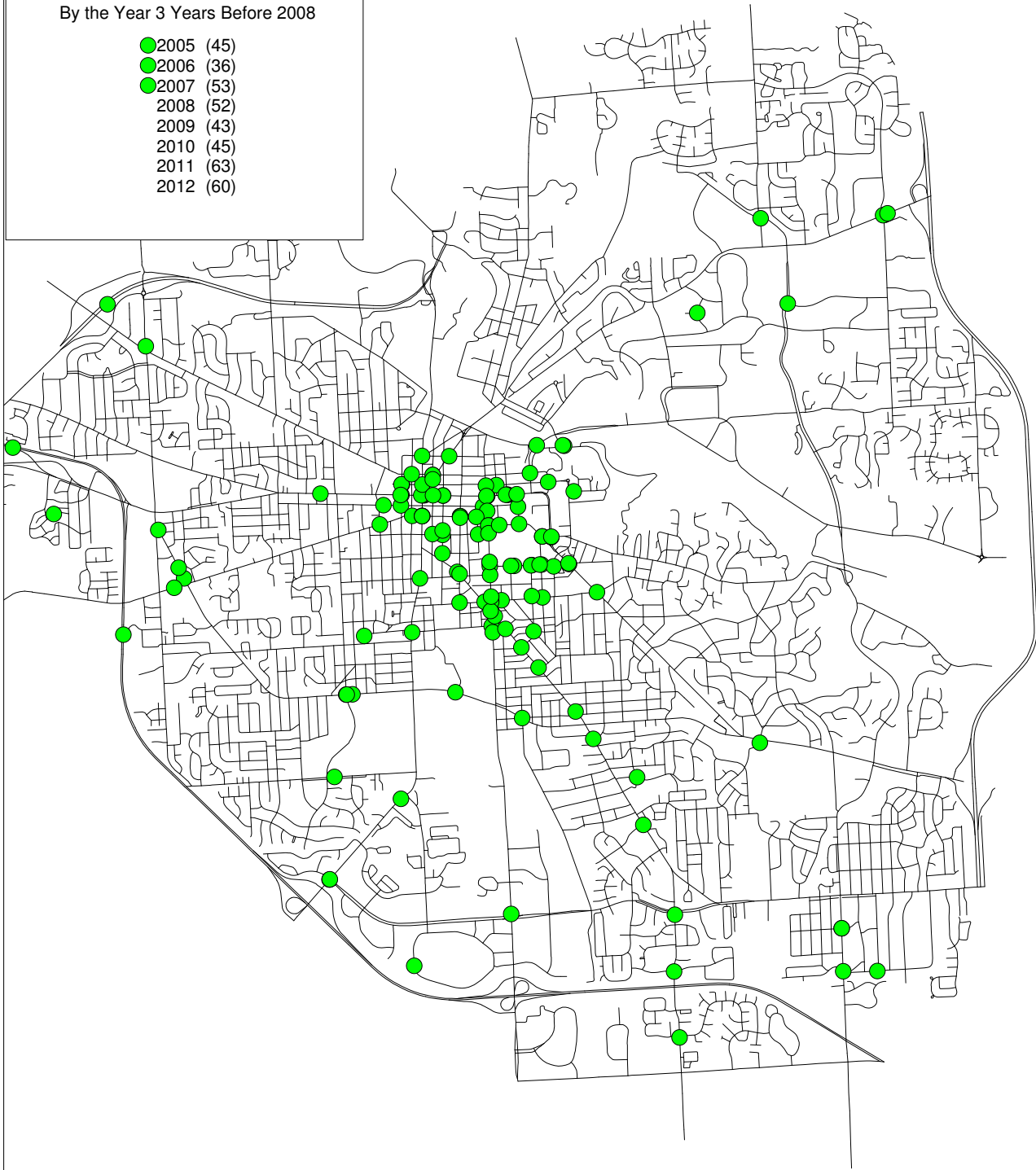


Pedestrian Crashes 2005 to 2012
By Crash Severity

- + Fatal (5)
- Injury (368)
- Non-Injury (24)

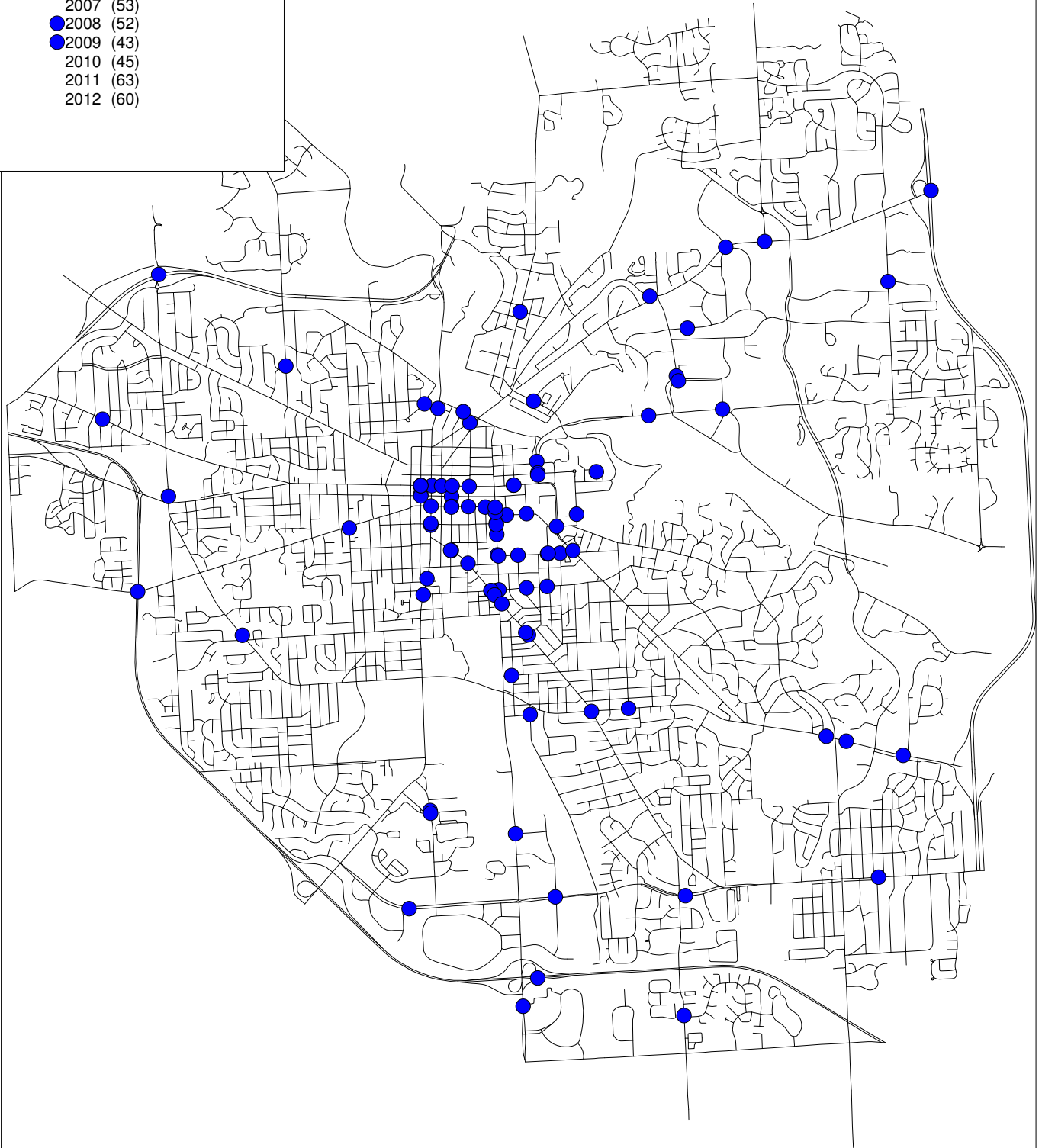
Pedestrian Crashes 2005 to 2012
By the Year 3 Years Before 2008

- 2005 (45)
- 2006 (36)
- 2007 (53)
- 2008 (52)
- 2009 (43)
- 2010 (45)
- 2011 (63)
- 2012 (60)



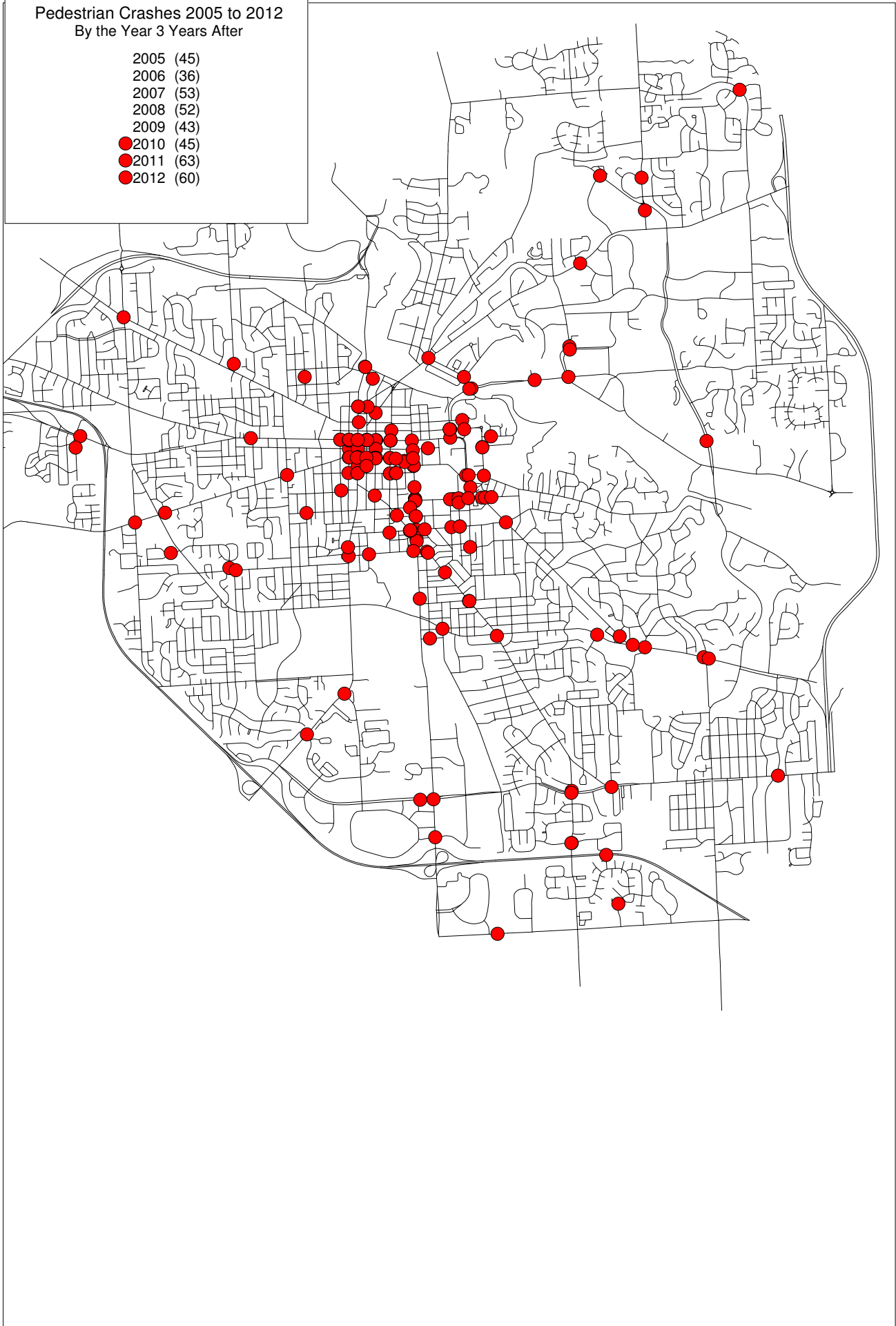
Pedestrian Crashes 2005 to 2012
By the Year Years 2008 and 2009

- 2005 (45)
- 2006 (36)
- 2007 (53)
- 2008 (52)
- 2009 (43)
- 2010 (45)
- 2011 (63)
- 2012 (60)



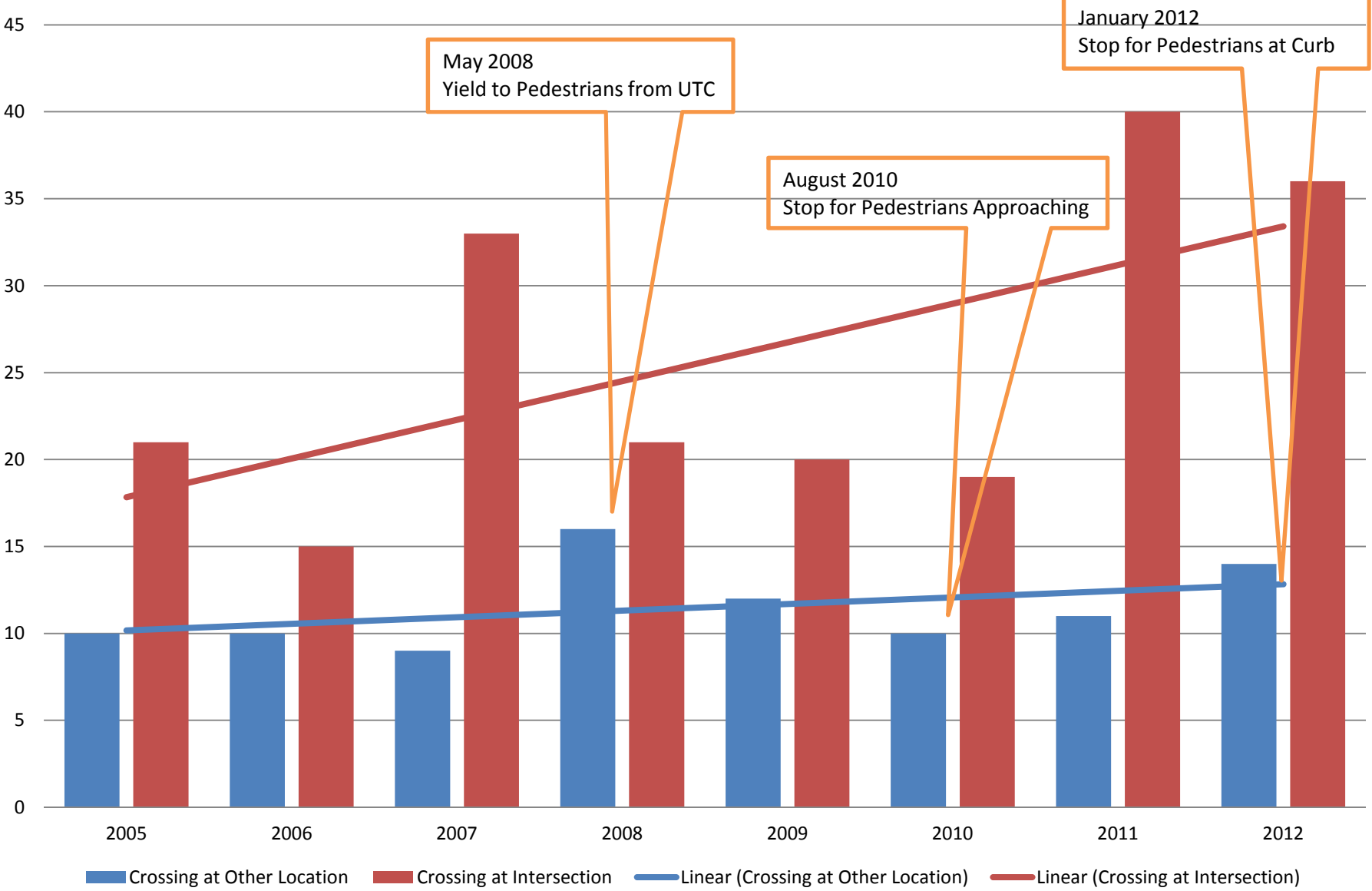
Pedestrian Crashes 2005 to 2012
By the Year 3 Years After

- 2005 (45)
- 2006 (36)
- 2007 (53)
- 2008 (52)
- 2009 (43)
- 2010 (45)
- 2011 (63)
- 2012 (60)



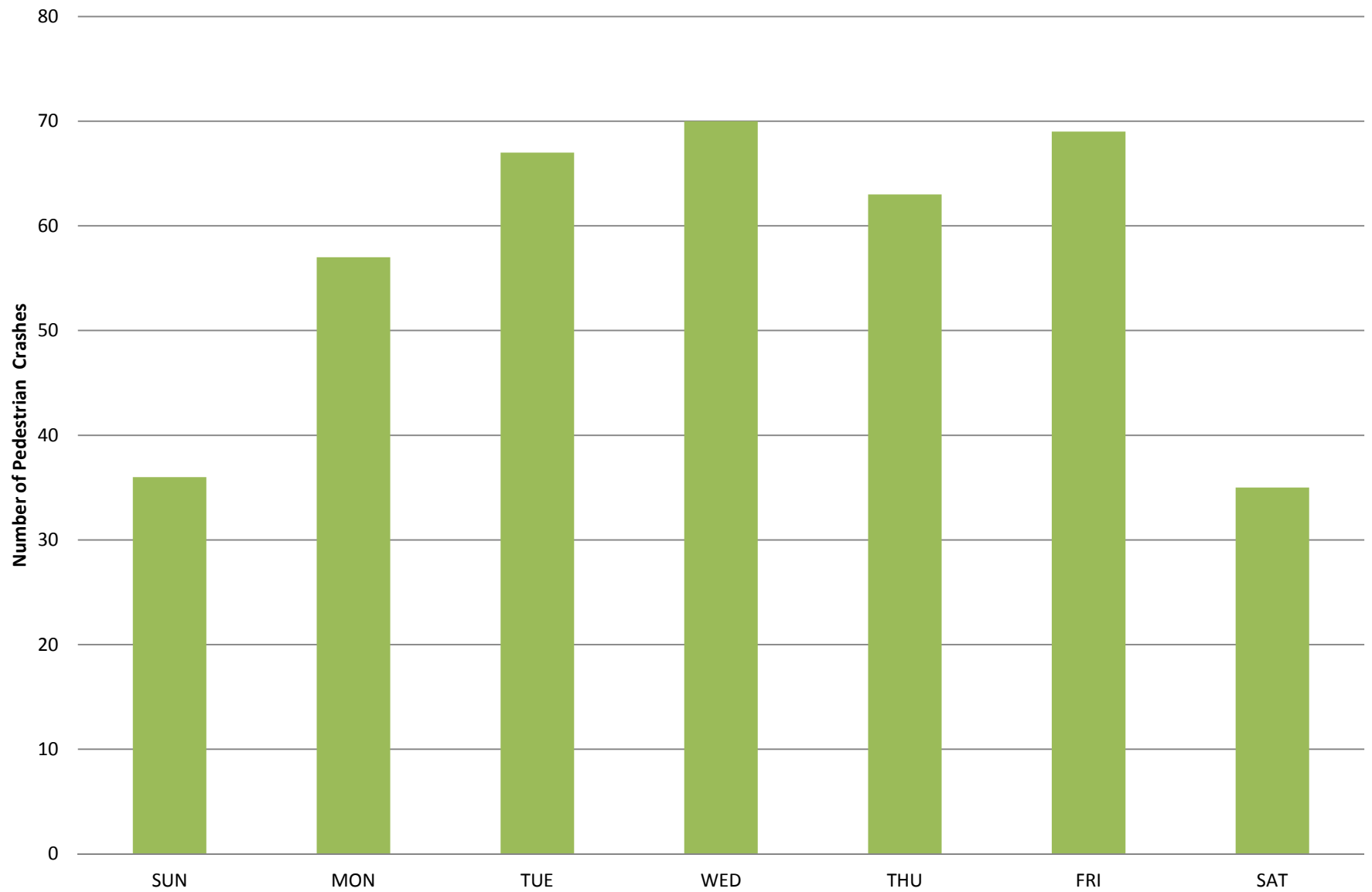
Pedestrian Crashes 2005 to 2012

Pedestrians Crossing at Intersection and other locations



Pedestrian Crashes 2005 to 2012

Crashes by Weekday



City of Ann Arbor Comparison of Pedestrian Crashes Signalized vs Non-Signalized and all Pedestrian Crashes

